

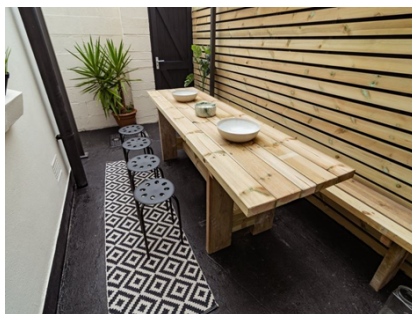
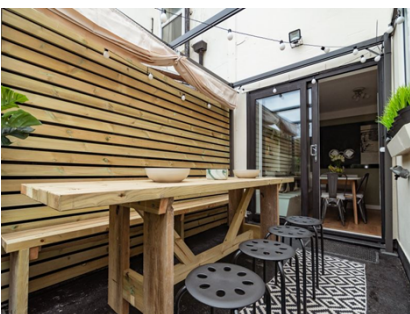
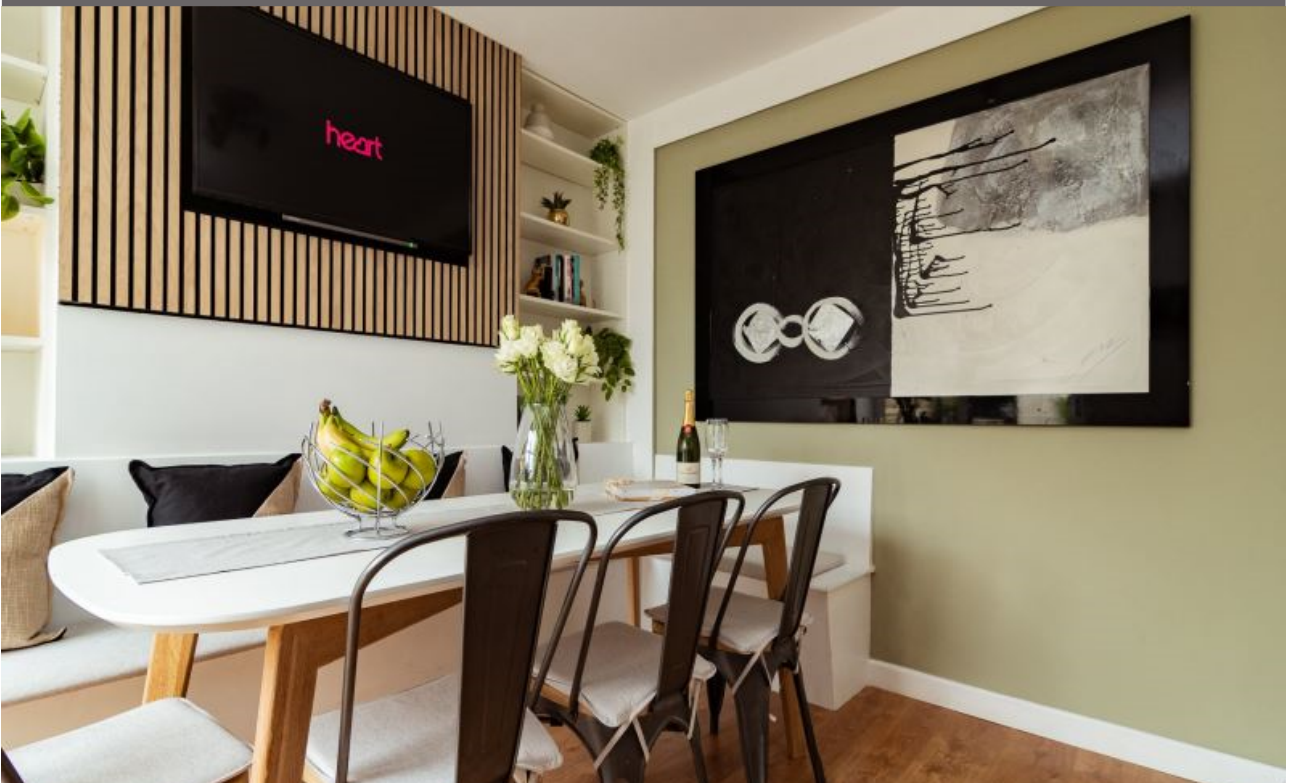
# MRKT

PROPERTY EXPERTS

South View Place, BH2 5PN

£3,000 Monthly

TO LET



## Property Features:

- Furnished
- Bournemouth Town Centre Location
- Central Heating
- Five Bedroom House
- Furnished
- Bournemouth Town Centre Location

## Description

Available for the period starting from September 2024 through aprox to end of April 2025. Fully furnished property in Bournemouth Town Centre.


## Room Dimensions

- 
- 
- 
- 

## Floor Plan

[[FloorPlanPhotos.Photo.StorageKey]:GetDBImage()]

## EPC Certificate

Energy Efficiency Rating		Environmental Impact (CO <sub>2</sub> ) Rating			
	Current	Potential		Current	Potential
Very energy efficient - lower running costs			Very environmentally friendly - lower CO <sub>2</sub> emissions		
(92-100) <b>A</b>			(92-100) <b>A</b>		
(81-91) <b>B</b>			(81-91) <b>B</b>		
(69-80) <b>C</b>			(69-80) <b>C</b>		
(55-68) <b>D</b>			(55-68) <b>D</b>		
(39-54) <b>E</b>			(39-54) <b>E</b>		
(21-38) <b>F</b>			(21-38) <b>F</b>		
(1-20) <b>G</b>			(1-20) <b>G</b>		
Not energy efficient - higher running costs			Not environmentally friendly - higher CO <sub>2</sub> emissions		
<b>England &amp; Wales</b>	EU Directive 2002/91/EC		<b>England &amp; Wales</b>	EU Directive 2002/91/EC	