



**GINGER COW**  
ESTATE AGENTS

01234 860215

## Claremont Court, Biggleswade Town Center

£170,000

1 1

This 1-bedroom apartment offers a rare opportunity to own a home full of character and located in the heart of Biggleswade. Whether you're a first-time buyer, a professional looking for a convenient base, or an investor seeking an attractive rental property, this home ticks all the boxes.



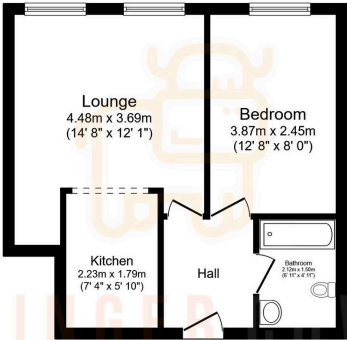


Floor Area: sq. ft.

Tenure: Leasehold

Service Charge: £1872 per annum

Ground Rent: £0 per annum



Floor Plan  
Floor area 36.4 m<sup>2</sup> (391 sq.ft.)

TOTAL: 36.4 m<sup>2</sup> (391 sq.ft.)

This floor plan is for illustrative purposes only. It is not drawn to scale. Any measurements, floor areas (including any total floor area), openings and orientations are approximate. No details are guaranteed. They cannot be relied upon for any purpose and do not form any part of any agreement. No liability is taken for any error, omission or misstatement. A party must rely upon its own inspection(s). Powered by www.propertybox.io

