






## Harlequin Crescent, Wixams

£395,000

 3  3  2

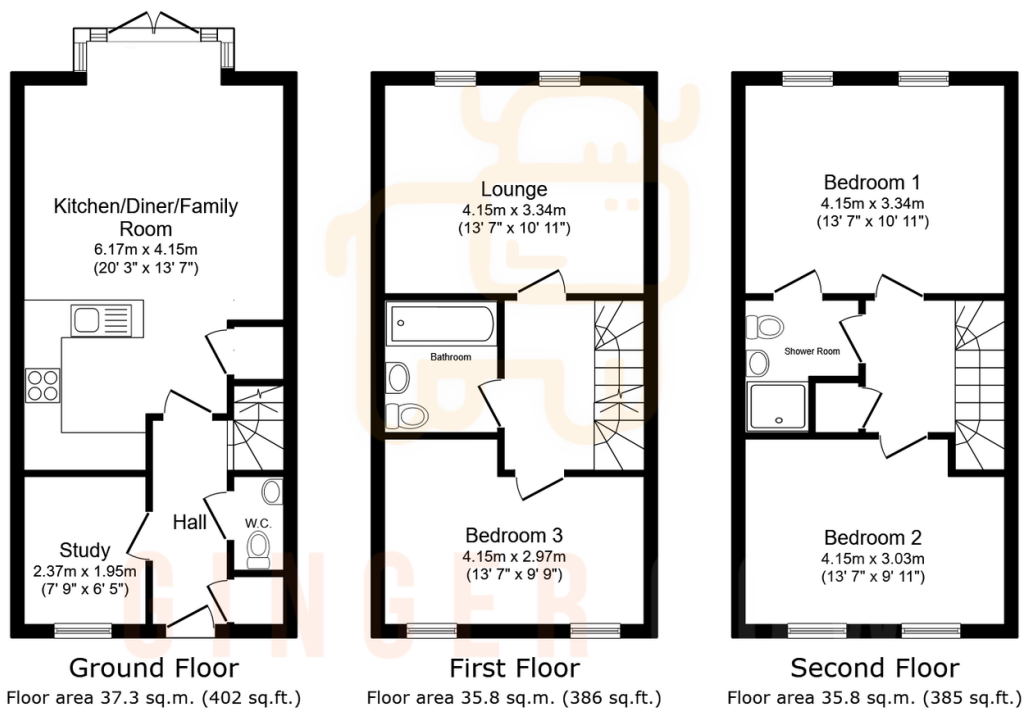


This beautifully presented three-storey townhouse is set within the sought-after Willow Grove development in Wixams. Designed with modern living in mind, it features a welcoming hallway, study, cloakroom, and a superb open-plan kitchen/dining/family room that opens onto the garden. The first floor offers a stylish lounge, family bathroom, and a comfortable double bedroom, while the top floor hosts the main bedroom with Jack and Jill bathroom access, plus another spacious double. Outside, the landscaped garden with patio and lawn provides a private retreat, and allocated parking sits conveniently to the rear. With its versatile layout, high-quality finish, and excellent location close to schools, shops, and open green spaces, this home is ideal for families and professionals alike.





- Sought-after Willow Grove location
- Spacious kitchen/dining/family room with garden access
- Elegant lounge on the first floor
- Jack and Jill bathroom to the top floor
- Allocated parking
- Three-storey townhouse with stylish kerb appeal
- Dedicated study for home working/Fourth bedroom
- Three well-proportioned double bedrooms
- Rear garden with patio and lawn
- EPC Grade B



Total floor area: 108.9 sq.m. (1,173 sq.ft.)

This floor plan is for illustrative purposes only. It is not drawn to scale. Any measurements, floor areas (including any total floor area), openings and orientations are approximate. No details are guaranteed, they cannot be relied upon for any purpose and do not form any part of any agreement. No liability is taken for any error, omission or misstatement. A party must rely upon its own inspection(s). Powered by [www.Propertybox.io](http://www.Propertybox.io)

