





57 Edenfield Road

Mobberley

A charming 2-bed semi-detached house in Mobberley village. Peaceful cul-de-sac, open views, spacious garden, light-filled open plan layout, 2 bedrooms, modern shower room. Driveway, garage, ideal for downsizing/first purchase, amenities nearby. No chain.

Council Tax band: C

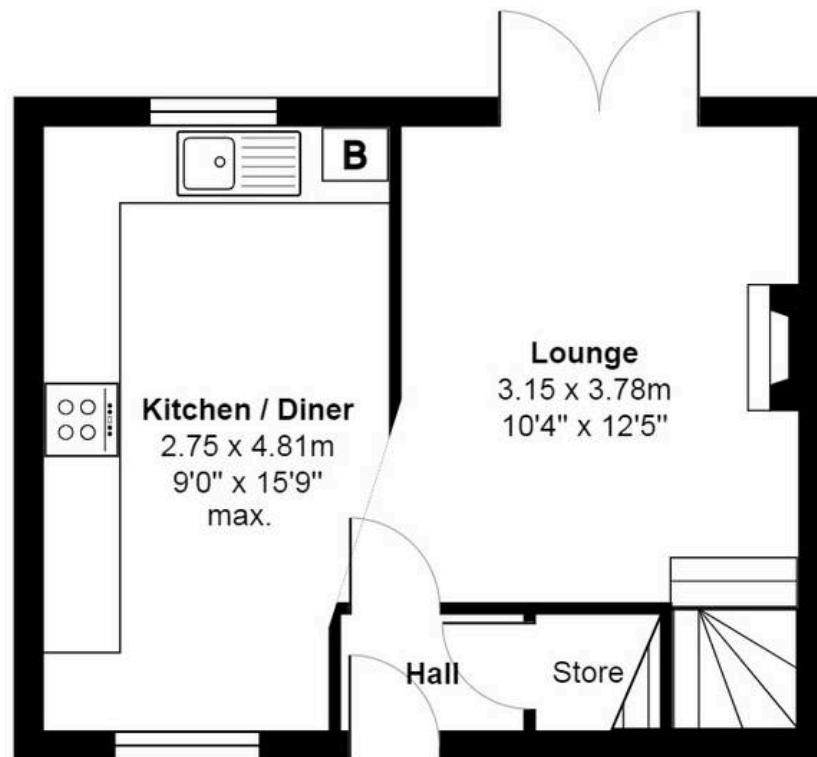
Tenure: Freehold

EPC Energy Efficiency Rating: D

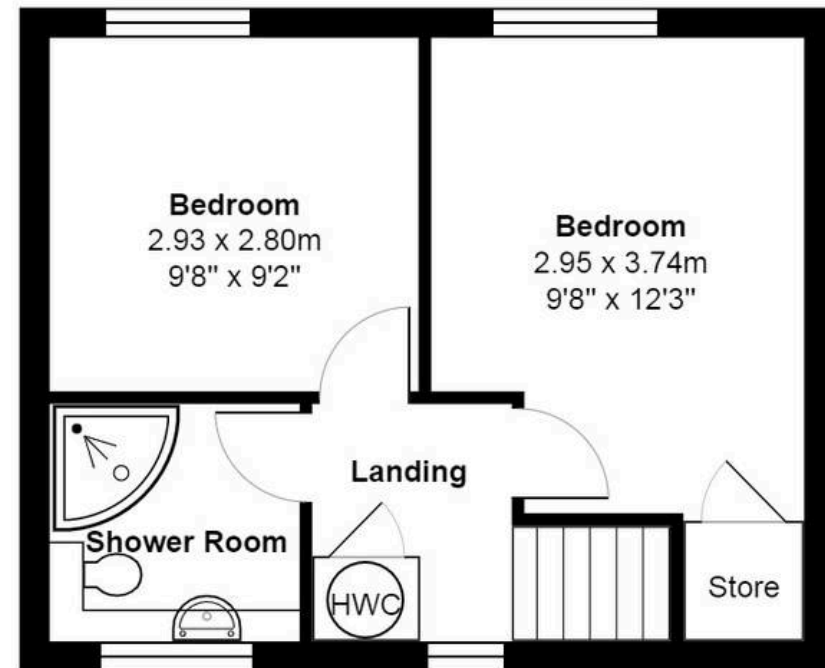
EPC Environmental Impact Rating:

- Stunning open views to the rear
- Quiet cul-de-sac in the heart of Mobberley village
- Two bedrooms and a modern shower room
- Open plan ground floor with great light flow
- Driveway parking and a garage
- No onward chain





Ground Floor



First Floor

Total Area: 57.6 m² ... 620 ft²

All measurements are approximate and for display purposes only



Stuart Rushton & Company

Stuart Rushton & Co, 35 King Street – WA16 6DW

01565 757000

enquiries@srushton.co.uk

www.srushton.co.uk



We are not authorised to make or give any representations or warranties in relation to the property either here or elsewhere. We assume no responsibility for any statement that may be made in these particulars, and they do not form part of any offer or contract and must not be relied upon as statements or representation of fact. Any areas, measurements or distances are approximate. The text, photographs and plans are for guidance only. Importantly, it should not be assumed that the property has all necessary planning, building regulations or other consents and we have not tested any services, equipment or facilities. Purchasers must satisfy themselves by inspection or otherwise.