







Cheriton

Trouthall Lane, Plumley

Council Tax band: E

Tenure: Freehold

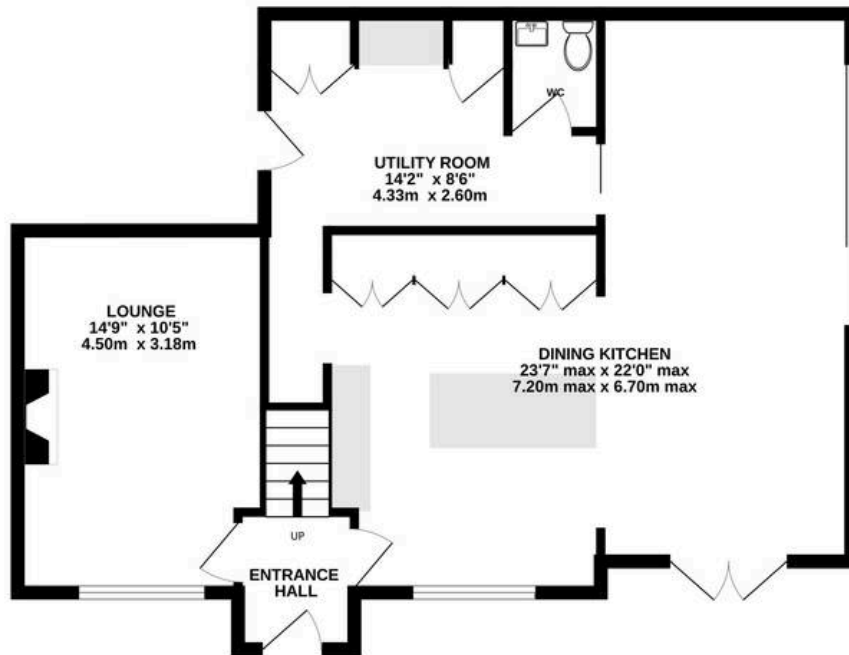
EPC Energy Efficiency Rating: D

A desirable semi-rural detached house, extended and modernised, with open plan kitchen, utility/boot room, and lounge on ground floor. Three bedrooms on first floor, lush gardens, ample parking. Planning permission for sun/garden room extension granted on 2nd October 2024.

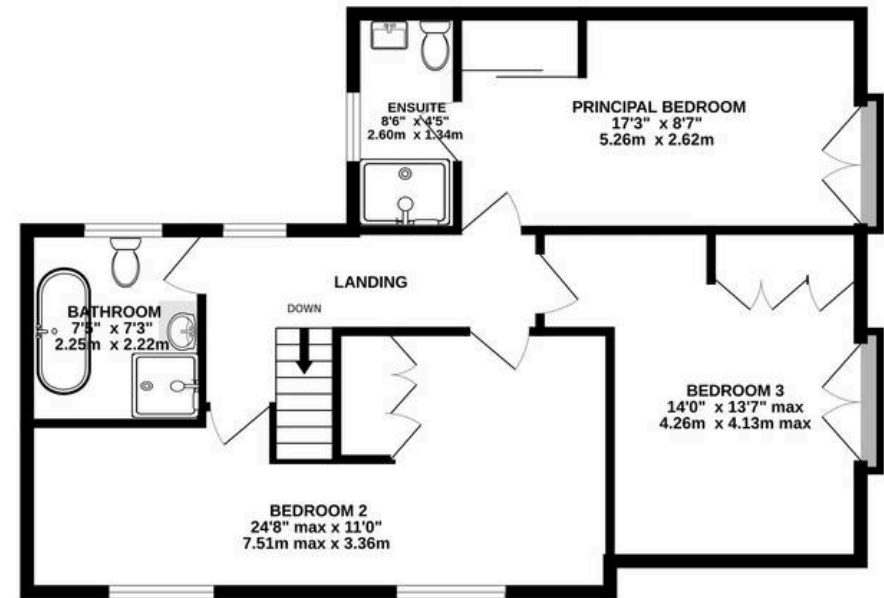
- Extended and modernised detached house with planning permission for further extension
- Open-plan dining kitchen
- Principal bedroom with en-suite
- Large, private gardens
- Excellent semi-rural position on the edge of the village
- Stylish and luxurious interior



GROUND FLOOR
757 sq.ft. (70.4 sq.m.) approx.



1ST FLOOR
720 sq.ft. (66.9 sq.m.) approx.



TOTAL FLOOR AREA : 1478 sq.ft. (137.3 sq.m.) approx.

Whilst every attempt has been made to ensure the accuracy of the floorplan contained here, measurements of doors, windows, rooms and any other items are approximate and no responsibility is taken for any error, omission or mis-statement. This plan is for illustrative purposes only and should be used as such by any prospective purchaser. The services, systems and appliances shown have not been tested and no guarantee as to their operability or efficiency can be given.

Made with Metropix ©2025



Stuart Rushton & Company

Stuart Rushton & Co, 35 King Street – WA16 6DW

01565 757000

enquiries@srushton.co.uk

www.srushton.co.uk



We are not authorised to make or give any representations or warranties in relation to the property either here or elsewhere. We assume no responsibility for any statement that may be made in these particulars, and they do not form part of any offer or contract and must not be relied upon as statements or representation of fact. Any areas, measurements or distances are approximate. The text, photographs and plans are for guidance only. Importantly, it should not be assumed that the property has all necessary planning, building regulations or other consents and we have not tested any services, equipment or facilities. Purchasers must satisfy themselves by inspection or otherwise.