







22 Water Garden

Alderley Park, Nether Alderley

A luxurious 3-bed apartment situated within Alderley Park, with open plan living, modern bathrooms, large balcony with panoramic views, and secure parking. Surrounded by nature and amenities. Upgraded design for contemporary yet serene living.

Council Tax band: G

Tenure: Share of Freehold

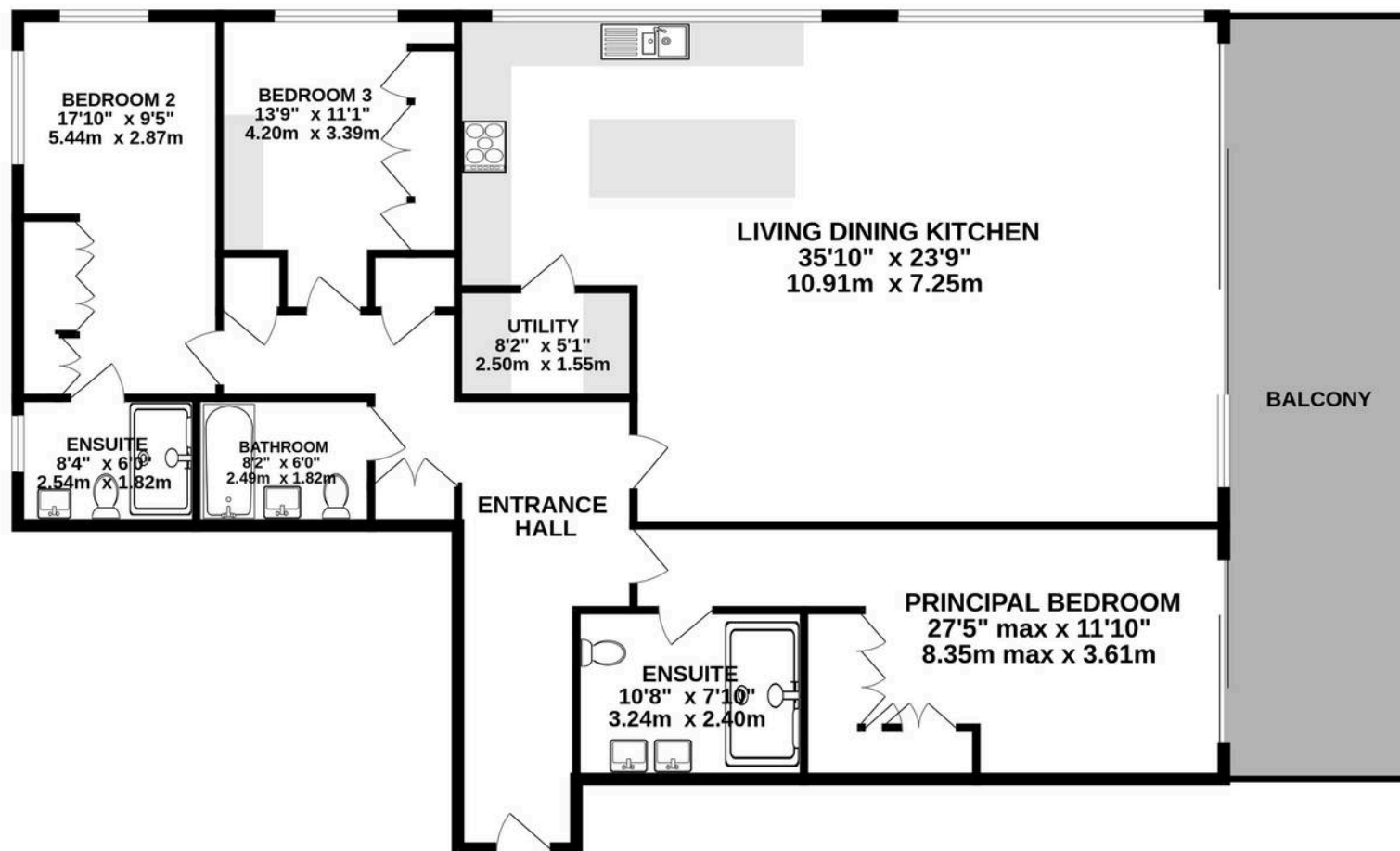
EPC Energy Efficiency Rating: B

EPC Environmental Impact Rating: B

- Bespoke high specification second floor apartment
- High quality finish throughout
- Superb open plan kitchen/living/dining space
- Three bedrooms, three bathrooms
- Fantastic views over the water garden and beyond
- Corner unit which benefits from views over the side garden and lots of light
- Large covered balcony
- Upgraded specification from new
- Secure garage parking for two cars
- Located on the superb 400 acre parkland of Alderley Park









Stuart Rushton & Company

Stuart Rushton & Co, 35 King Street – WA16 6DW

01565 757000

enquiries@srushton.co.uk

www.srushton.co.uk



We are not authorised to make or give any representations or warranties in relation to the property either here or elsewhere. We assume no responsibility for any statement that may be made in these particulars, and they do not form part of any offer or contract and must not be relied upon as statements or representation of fact. Any areas, measurements or distances are approximate. The text, photographs and plans are for guidance only. Importantly, it should not be assumed that the property has all necessary planning, building regulations or other consents and we have not tested any services, equipment or facilities. Purchasers must satisfy themselves by inspection or otherwise.