



no.2







## 2a Crossway

Didsbury, Manchester

Tenure: Freehold

A superb freehold building plot in the middle of Didsbury village, with a detailed planning consent (2024) for a new three bedroom detached house of 1867 square feet.

The consent allows for a three storey design with a good size lower ground floor providing useful extra reception accommodation but this may be amended if required to simplify the build for a smaller two storey house of 1157 square feet. A new planning application may be required for this.

The CGI's are indicative of what could be built and should not be relied upon. Full details of the planning are available from our office or on the Manchester City council web site under planning reference number 139642/FO/2024.

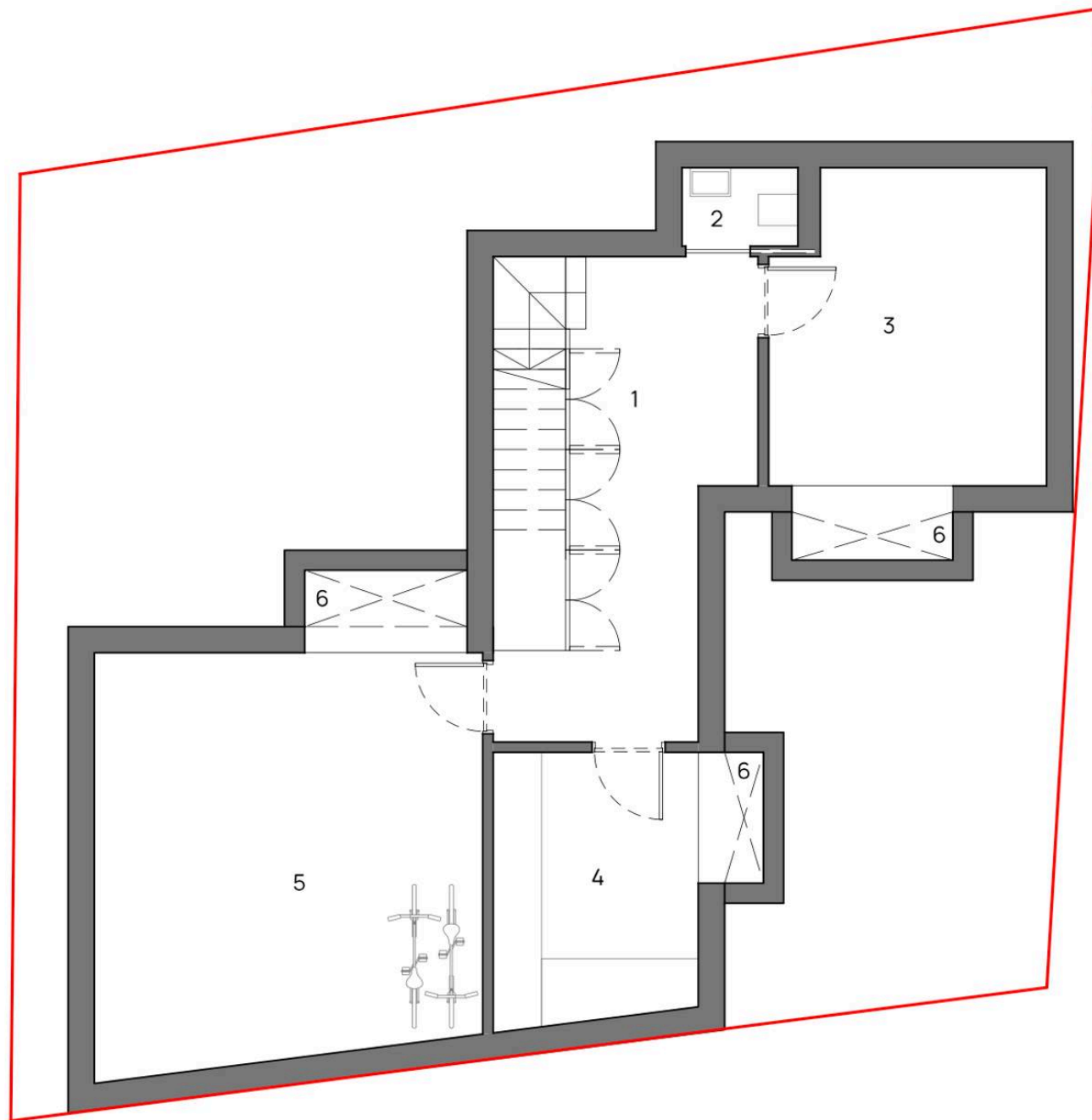
Viewings are available on site at any reasonable time of day.

- An exciting single building plot with full planning consent in Didsbury village centre
- Superb central location, off road parking and rear garden
- Two or three storey possibilities, either 1157 or 1867 square feet

















## Stuart Rushton & Company

Stuart Rushton & Co, 35 King Street – WA16 6DW

01565 757000

[enquiries@srushton.co.uk](mailto:enquiries@srushton.co.uk)

[www.srushton.co.uk](http://www.srushton.co.uk)



We are not authorised to make or give any representations or warranties in relation to the property either here or elsewhere. We assume no responsibility for any statement that may be made in these particulars, and they do not form part of any offer or contract and must not be relied upon as statements or representation of fact. Any areas, measurements or distances are approximate. The text, photographs and plans are for guidance only. Importantly, it should not be assumed that the property has all necessary planning, building regulations or other consents and we have not tested any services, equipment or facilities. Purchasers must satisfy themselves by inspection or otherwise.