









6 Whitson Close

High Legh, Knutsford

Impeccable 4-bed, 2-bath detached home in High Legh cul-de-sac, bordering the High Legh Golf Course. South-facing garden with open views, spacious living areas, principal bedroom with en-suite, and great entertaining space. Easy access to Knutsford, Lymm, and Altrincham, ideal for families.

Council Tax band: G

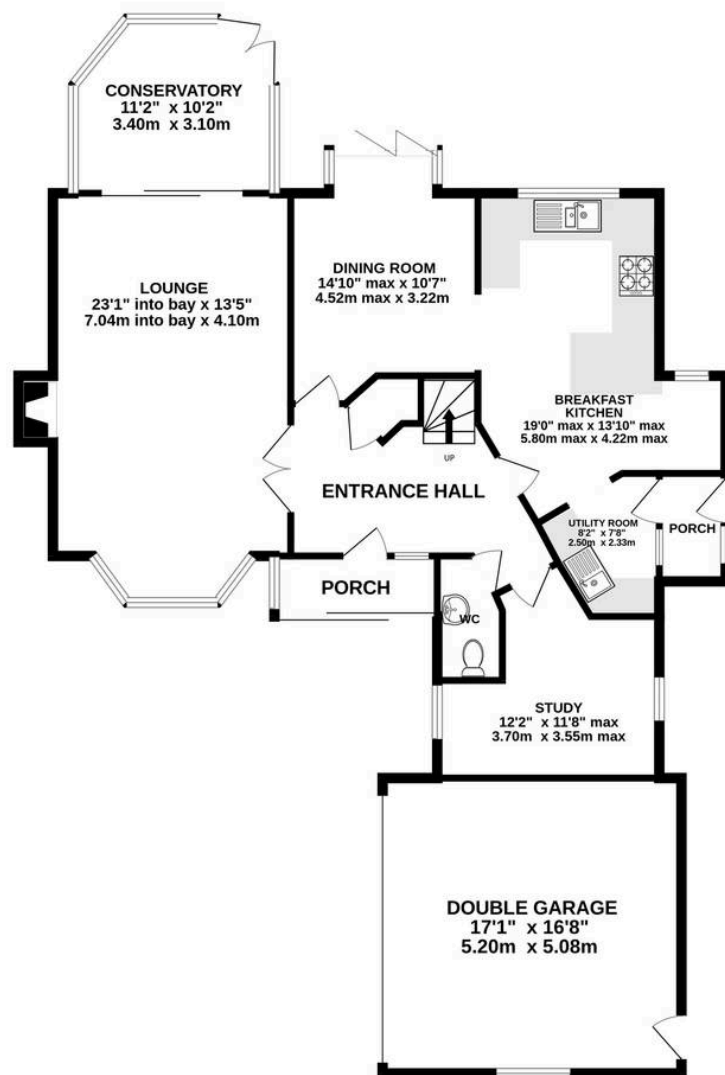
Tenure: Freehold

EPC Energy Efficiency Rating: C

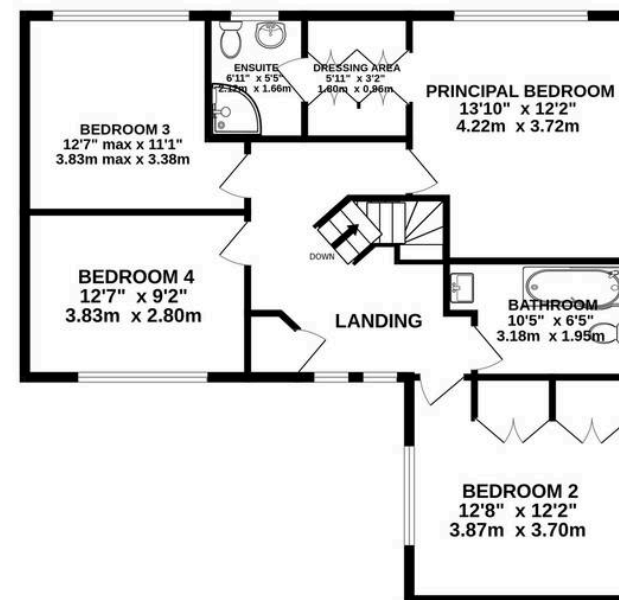
- A superb detached family home of four bedrooms and two bathrooms
- Backing onto High Legh Golf Course
- South facing, open aspect, garden with great privacy and sunshine through the day
- Immaculately presented throughout with a high standard of finish
- Extensive living areas, open plan kitchen/diner, utility room, study and downstairs WC
- Prestigious High Legh cul-de-sac with great connections and school catchments
- Just a few minutes from Knutsford, Lymm and Altrincham



GROUND FLOOR
1348 sq.ft. (125.3 sq.m.) approx.



1ST FLOOR
856 sq.ft. (79.5 sq.m.) approx.



TOTAL FLOOR AREA : 2205 sq.ft. (204.8 sq.m.) approx.

Whilst every attempt has been made to ensure the accuracy of the floorplan contained here, measurements of doors, windows, rooms and any other items are approximate and no responsibility is taken for any error, omission or mis-statement. This plan is for illustrative purposes only and should be used as such by any prospective purchaser. The services, systems and appliances shown have not been tested and no guarantee as to their operability or efficiency can be given.

Made with Metropix ©2025



Stuart Rushton & Company

Stuart Rushton & Co, 35 King Street – WA16 6DW

01565 757000

enquiries@srushton.co.uk

www.srushton.co.uk



We are not authorised to make or give any representations or warranties in relation to the property either here or elsewhere. We assume no responsibility for any statement that may be made in these particulars, and they do not form part of any offer or contract and must not be relied upon as statements or representation of fact. Any areas, measurements or distances are approximate. The text, photographs and plans are for guidance only. Importantly, it should not be assumed that the property has all necessary planning, building regulations or other consents and we have not tested any services, equipment or facilities. Purchasers must satisfy themselves by inspection or otherwise.