









6 Chellaston House

Toft Road, Knutsford

A stunning ground floor apartment in prestigious Chellaston House development. Former show home with spacious open-plan living, 2 double bedrooms, 2 bathrooms, modern kitchen, communal garden, residents' parking. Ideal for downsizers, central location near amenities.

Council Tax band: E

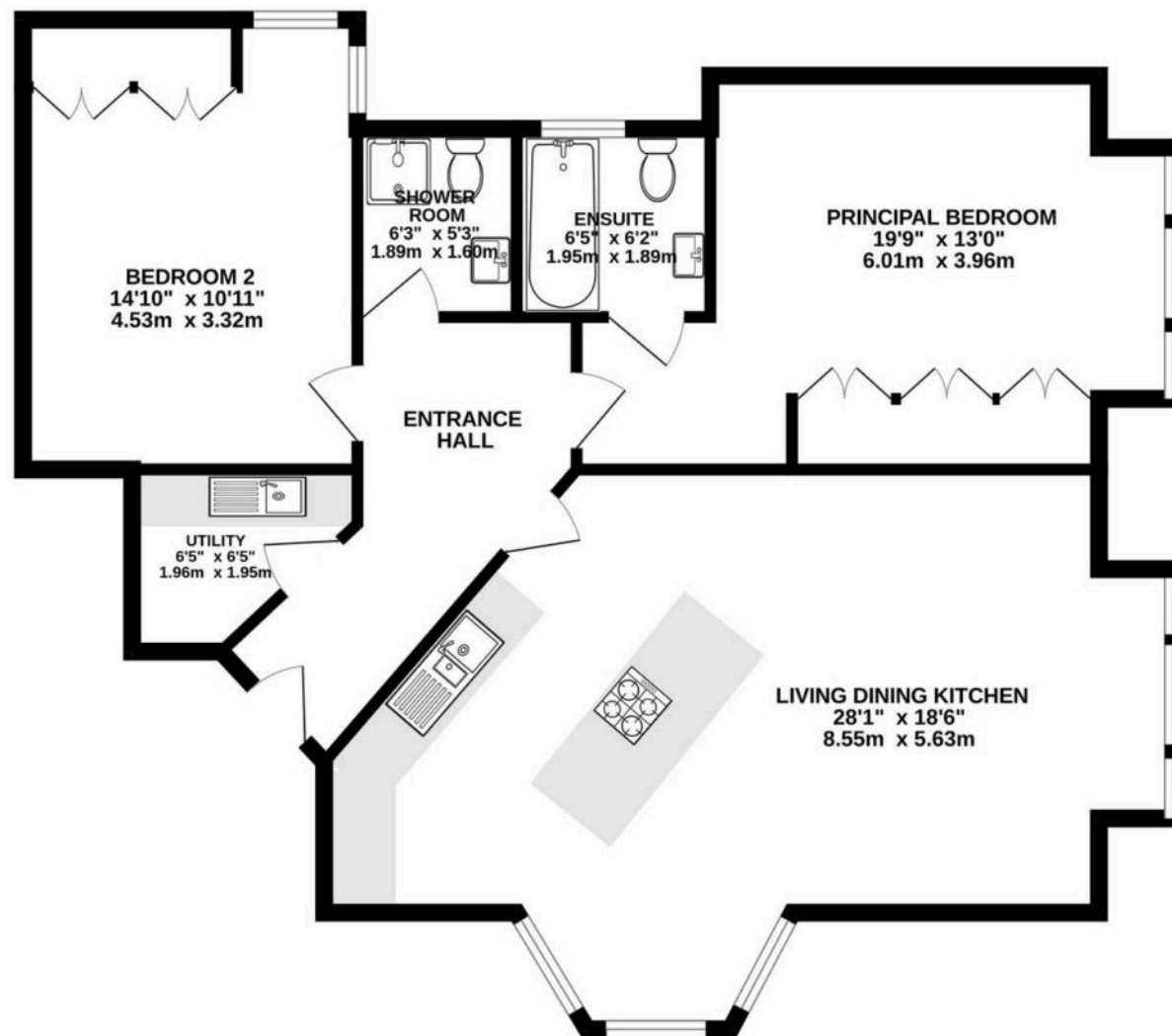
Tenure: Leasehold

EPC Energy Efficiency Rating: C

- Premier Position in Chellaston House – Former show home, occupying arguably the best location within this sought-after development.
- Expansive Open-Plan Living – Stunning living/kitchen/diner with lounge area, bay-windowed dining space, and high-spec kitchen with central island.
- Two Generous Double Bedrooms – Both with fitted furniture; principal bedroom boasts a stylish ensuite shower room.
- Modern & Elegant Interiors – Beautifully presented throughout with excellent proportions, high ceilings, and abundant natural light.
- Practical & Comfortable Living – Includes a welcoming entrance hall, additional shower room for guests, and a separate utility room.
- Unbeatable Location – Moments from Knutsford's town centre amenities and transport links, with allocated parking and communal garden.
- No onward chain



948 sq.ft. (88.1 sq.m.) approx.



TOTAL FLOOR AREA : 948 sq.ft. (88.1 sq.m.) approx.

Whilst every attempt has been made to ensure the accuracy of the floorplan contained here, measurements of doors, windows, rooms and any other items are approximate and no responsibility is taken for any error, omission or mis-statement. This plan is for illustrative purposes only and should be used as such by any prospective purchaser. The services, systems and appliances shown have not been tested and no guarantee as to their operability or efficiency can be given.
Made with Metropix ©2025



Stuart Rushton & Company

Stuart Rushton & Co, 35 King Street – WA16 6DW

01565 757000

enquiries@srushton.co.uk

www.srushton.co.uk



We are not authorised to make or give any representations or warranties in relation to the property either here or elsewhere. We assume no responsibility for any statement that may be made in these particulars, and they do not form part of any offer or contract and must not be relied upon as statements or representation of fact. Any areas, measurements or distances are approximate. The text, photographs and plans are for guidance only. Importantly, it should not be assumed that the property has all necessary planning, building regulations or other consents and we have not tested any services, equipment or facilities. Purchasers must satisfy themselves by inspection or otherwise.