









## Maple House, Mere

Magnificent 5,800 sq ft home on prestigious road with breathtaking views over renowned Mere Golf Course. Meticulously refurbished with classical design and meticulous attention to detail. Luxurious interior, spacious living areas, 5 beds, 5 baths, gym, and landscaped gardens with outdoor kitchen and direct golf course access.

- Fantastic location situated on a super-prime road with breathtaking views over the renowned Mere Golf Course
- Finished to exacting standards with high quality and stylish interiors throughout
- Spacious and flexible accommodation reaching to around 5800 sqft
- Expansive open-plan kitchen/living/dining area with a contemporary SieMatic kitchen, integrated appliances, a central island, and a stylish circular bar









- Five bedrooms across two floors, including three first-floor bedrooms with four bathrooms and two second-floor bedrooms sharing a well-designed bathroom
- Exceptional principle bedroom suite with two bathrooms, dressing room, and balcony with views over the golf course
- Beautifully landscaped rear garden with mature borders, a raised decked terrace, and a fully tiled outdoor kitchen/entertaining area with water feature
- Entered through electric gates onto a resin-bound driveway with a double oak-framed carport, surrounded by meticulously landscaped grounds with box hedge detailing and specimen trees.

Council Tax band: H

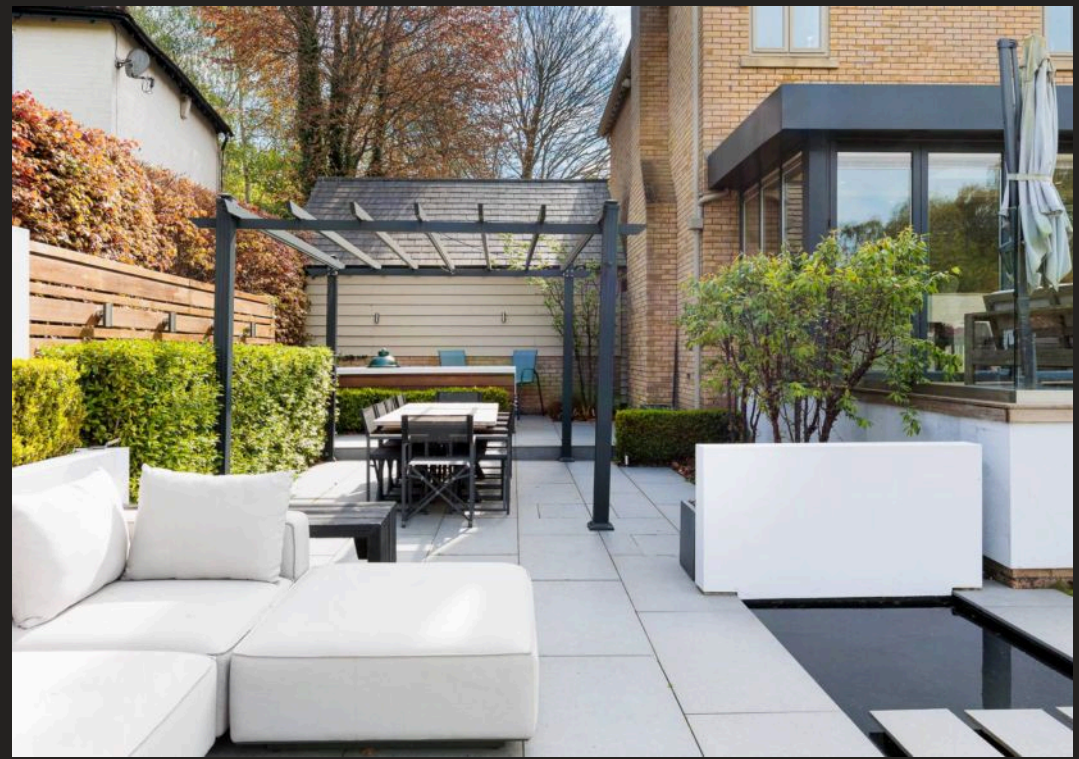
Tenure: Freehold

EPC Energy Efficiency Rating: C

EPC Environmental Impact Rating: C

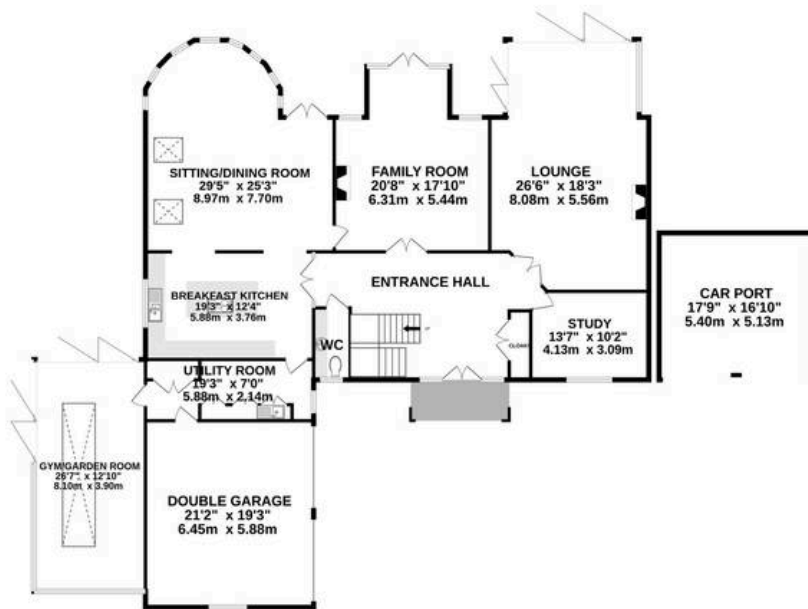




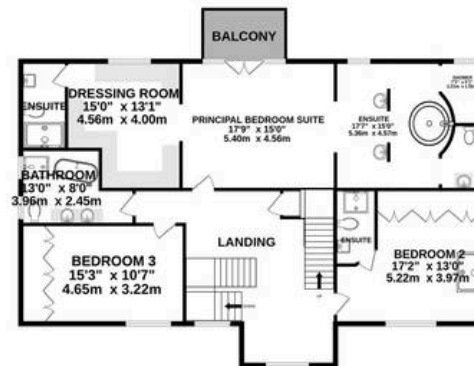




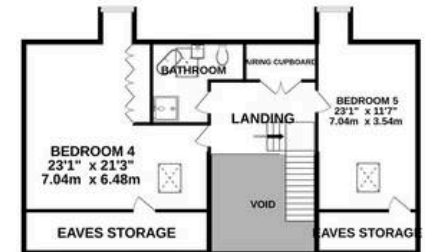
GROUND FLOOR  
3170 sq.ft. (294.5 sq.m.) approx.



1ST FLOOR  
1653 sq.ft. (153.6 sq.m.) approx.



2ND FLOOR  
982 sq.ft. (91.3 sq.m.) approx.



TOTAL FLOOR AREA : 5806 sq.ft. (539.4 sq.m.) approx.

Whilst every attempt has been made to ensure the accuracy of the floorplan contained here, measurements of doors, windows, rooms and any other items are approximate and no responsibility is taken for any error, omission or mis-statement. This plan is for illustrative purposes only and should be used as such by any prospective purchaser. The services, systems and appliances shown have not been tested and no guarantee as to their operability or efficiency can be given.

Made with Metropix ©2025





## Stuart Rushton & Company

Stuart Rushton & Co, 35 King Street – WA16 6DW

01565 757000

[enquiries@srushton.co.uk](mailto:enquiries@srushton.co.uk)

[www.srushton.co.uk](http://www.srushton.co.uk)



We are not authorised to make or give any representations or warranties in relation to the property either here or elsewhere. We assume no responsibility for any statement that may be made in these particulars, and they do not form part of any offer or contract and must not be relied upon as statements or representation of fact. Any areas, measurements or distances are approximate. The text, photographs and plans are for guidance only. Importantly, it should not be assumed that the property has all necessary planning, building regulations or other consents and we have not tested any services, equipment or facilities. Purchasers must satisfy themselves by inspection or otherwise.