







6 Rowley Way

Knutsford

A beautifully presented 3-bed detached home on Rowley Way, Knutsford. Stylish interiors, dual aspect windows, modern kitchen, spacious lounge, south-facing garden, office, utility room, main suite with dressing room, built-in storage, modern bathrooms. Ideal location near schools and town centre.

Council Tax band: F

Tenure: Freehold

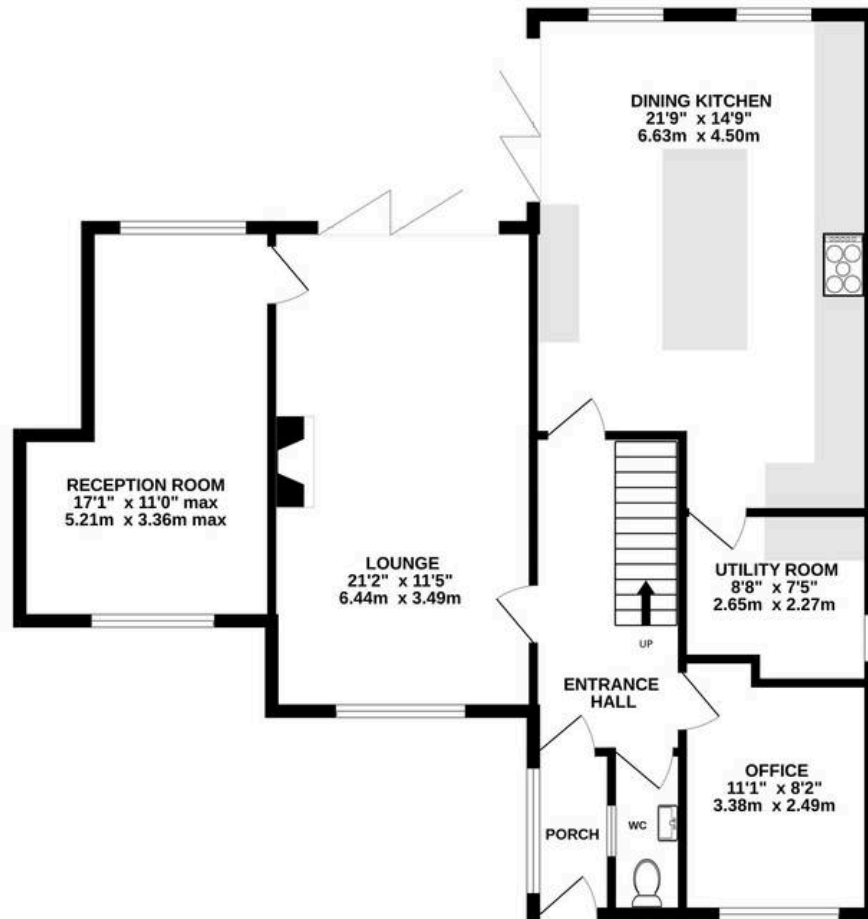
EPC Energy Efficiency Rating: D

EPC Environmental Impact Rating: E

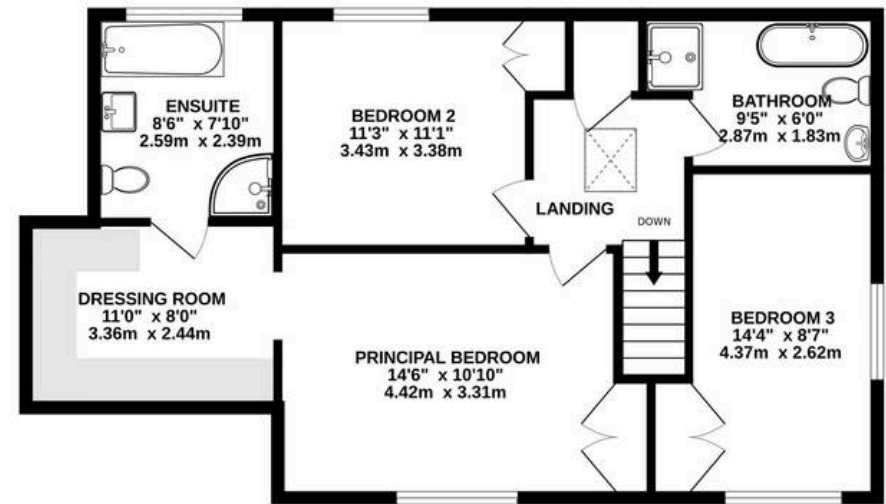
- Beautifully extended three double bedroom detached home located on Rowley Way in a desirable Knutsford development.
- Ideal location within walking distance of Bexton Primary School and close to Knutsford town centre.
- Great curb appeal with recently added front render, tarmac driveway with block-paved borders, and a stylish exterior.
- Light-filled and spacious throughout, with many rooms enjoying dual aspect windows and an open, airy feel.
- Flexible ground floor layout including lounge, high-spec kitchen/dining room with Neff appliances and Quooker tap, flexible third reception room, utility room, WC, and home office.
- Three generous double bedrooms upstairs, featuring a main suite with dressing room and bathroom, plus additional modern bathroom.
- No onward chain.



GROUND FLOOR
978 sq.ft. (90.9 sq.m.) approx.



1ST FLOOR
716 sq.ft. (66.5 sq.m.) approx.



TOTAL FLOOR AREA : 1695 sq.ft. (157.4 sq.m.) approx.

Whilst every attempt has been made to ensure the accuracy of the floorplan contained here, measurements of doors, windows, rooms and any other items are approximate and no responsibility is taken for any error, omission or mis-statement. This plan is for illustrative purposes only and should be used as such by any prospective purchaser. The services, systems and appliances shown have not been tested and no guarantee as to their operability or efficiency can be given.

Made with Metropix ©2025



Stuart Rushton & Company

Stuart Rushton & Co, 35 King Street – WA16 6DW

01565 757000

enquiries@srushton.co.uk

www.srushton.co.uk



We are not authorised to make or give any representations or warranties in relation to the property either here or elsewhere. We assume no responsibility for any statement that may be made in these particulars, and they do not form part of any offer or contract and must not be relied upon as statements or representation of fact. Any areas, measurements or distances are approximate. The text, photographs and plans are for guidance only. Importantly, it should not be assumed that the property has all necessary planning, building regulations or other consents and we have not tested any services, equipment or facilities. Purchasers must satisfy themselves by inspection or otherwise.