







60 The Shambles

Knutsford, Knutsford

A charming 2-bed property with private entrance and staircase, set in a lovely courtyard development near Knutsford. Spacious lounge, dining kitchen, en suite, off-road parking. Ideal blend of privacy and convenience in desirable location.

Council Tax band: D

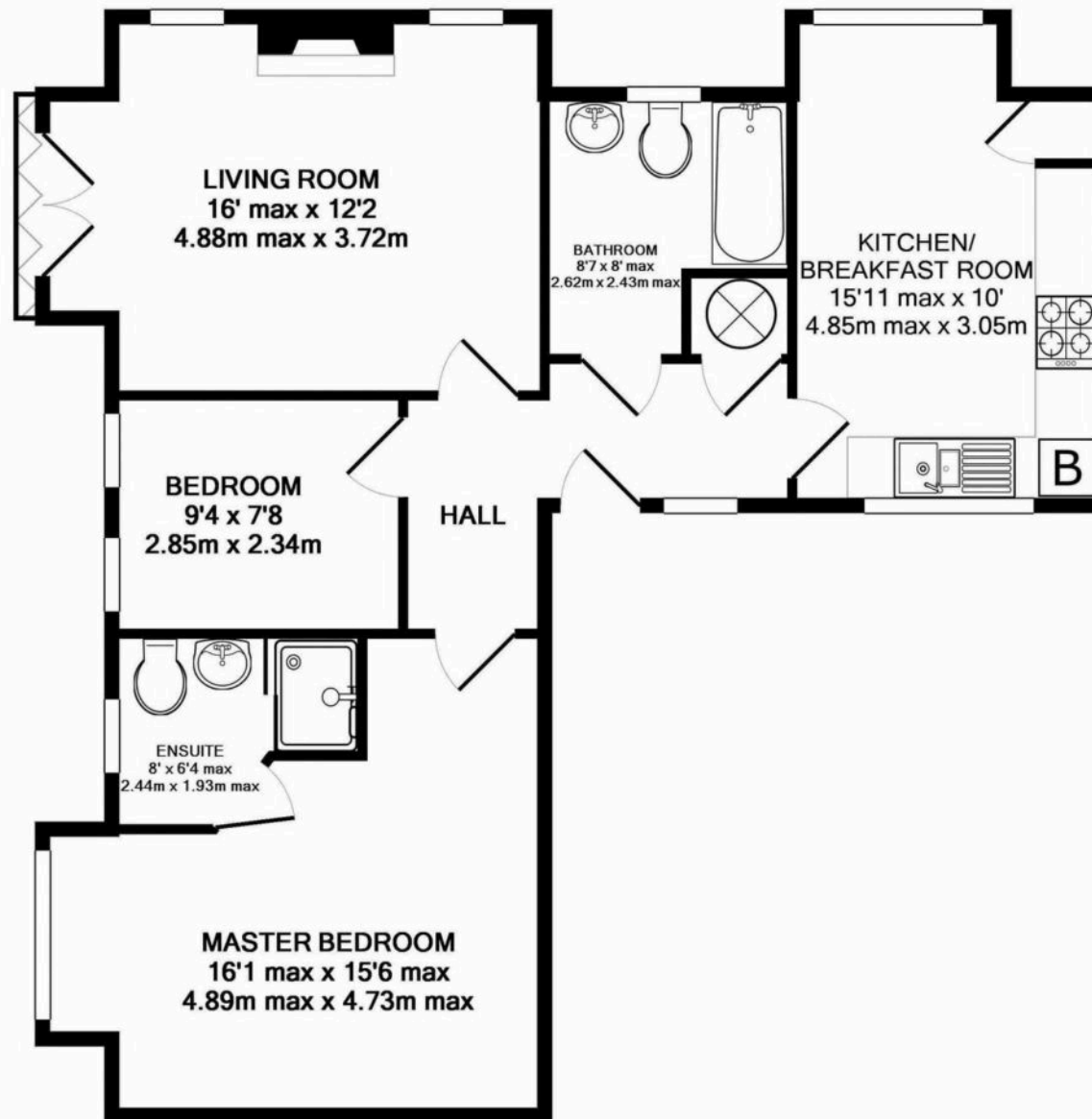
Tenure: Leasehold

EPC Energy Efficiency Rating: D

EPC Environmental Impact Rating: D

- Private entrance with own staircase
- Light and spacious accommodation
- Traditional layout with spacious dining kitchen and generous lounge
- Two bedrooms and two bathrooms
- Quiet position, just minutes walk from the town centre
- Gas central heating and a gas fire in the lounge





TOTAL APPROX. FLOOR AREA 781 SQ.FT. (72.5 SQ.M.)

Whilst every attempt has been made to ensure the accuracy of the floor plan contained here, measurements of doors, windows, rooms and any other items are approximate and no responsibility is taken for any error, omission, or mis-statement. This plan is for illustrative purposes only and should be used as such by any prospective purchaser. The services, systems and appliances shown have not been tested and no guarantee as to their operability or efficiency can be given

Made with Metropix ©2017



Stuart Rushton & Company

Stuart Rushton & Co, 35 King Street – WA16 6DW

01565 757000

enquiries@srushton.co.uk

www.srushton.co.uk



We are not authorised to make or give any representations or warranties in relation to the property either here or elsewhere. We assume no responsibility for any statement that may be made in these particulars, and they do not form part of any offer or contract and must not be relied upon as statements or representation of fact. Any areas, measurements or distances are approximate. The text, photographs and plans are for guidance only. Importantly, it should not be assumed that the property has all necessary planning, building regulations or other consents and we have not tested any services, equipment or facilities. Purchasers must satisfy themselves by inspection or otherwise.