







15 Goughs Lane

Knutsford

A very attractive, high specification 4500 square foot modern house situated within beautiful landscaped gardens on the edge of the Legh Road conservation area, with an attractive open outlook to the rear and within easy reach of the town centre.

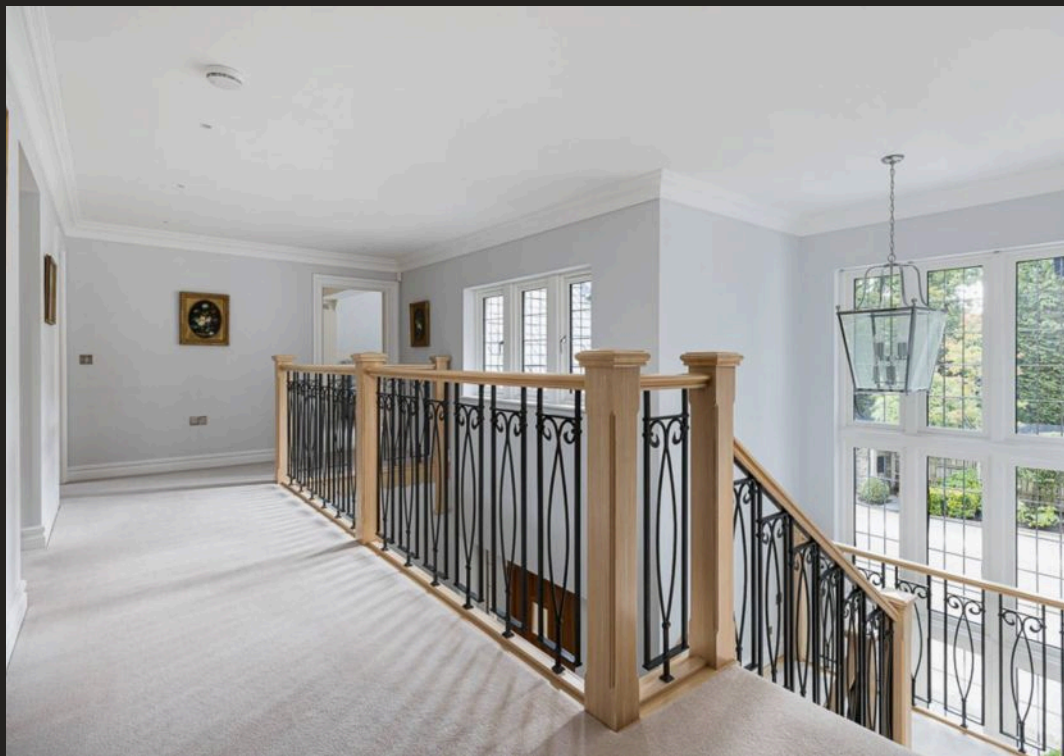
Council Tax band: G

Tenure: Freehold

EPC Energy Efficiency Rating: C

- Lovely modern detached house in beautiful landscaped gardens
- Completed in 2013 to an exceptional standard, in all around 4500 square feet
- Super location within the Legh Road conservation area
- Five bedrooms, four bathrooms, four reception rooms

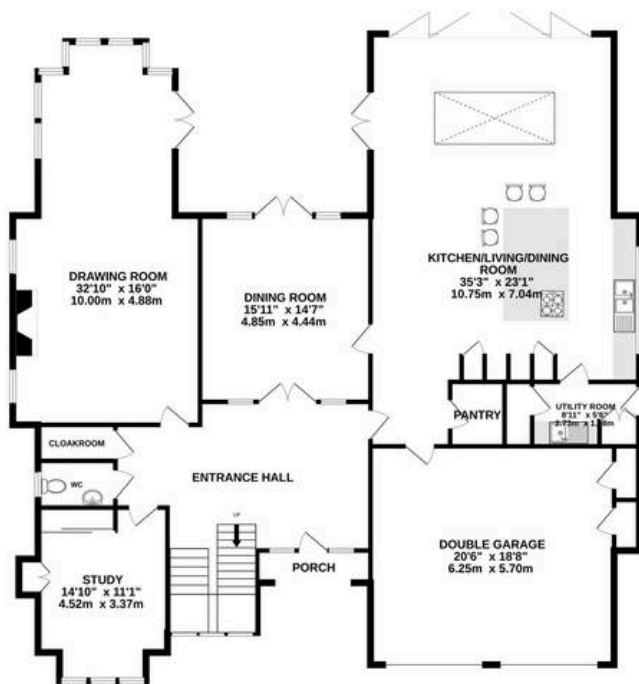








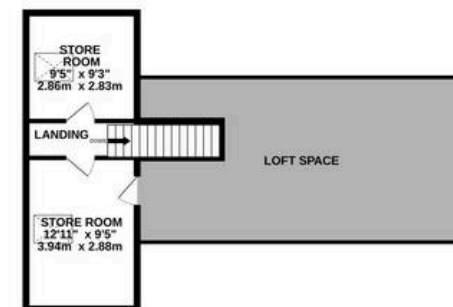
GROUND FLOOR
2397 sq.ft. (222.7 sq.m.) approx.



1ST FLOOR
1855 sq.ft. (172.4 sq.m.) approx.



2ND FLOOR
264 sq.ft. (24.5 sq.m.) approx.



TOTAL FLOOR AREA : 4516 sq.ft. (419.6 sq.m.) approx.

Whilst every attempt has been made to ensure the accuracy of the floorplan contained here, measurements of doors, windows, rooms and any other items are approximate and no responsibility is taken for any error, omission or mis-statement. This plan is for illustrative purposes only and should be used as such by any prospective purchaser. The services, systems and appliances shown have not been tested and no guarantee as to their operability or efficiency can be given.

Made with Metropix ©2025



Stuart Rushton & Company

Stuart Rushton & Co, 35 King Street – WA16 6DW

01565 757000

enquiries@srushton.co.uk

www.srushton.co.uk



We are not authorised to make or give any representations or warranties in relation to the property either here or elsewhere. We assume no responsibility for any statement that may be made in these particulars, and they do not form part of any offer or contract and must not be relied upon as statements or representation of fact. Any areas, measurements or distances are approximate. The text, photographs and plans are for guidance only. Importantly, it should not be assumed that the property has all necessary planning, building regulations or other consents and we have not tested any services, equipment or facilities. Purchasers must satisfy themselves by inspection or otherwise.