







Beech Tree Cottage Hulme Lane

Lower Peover, Knutsford

A delightful, 2,200sq ft modern detached thatched cottage, standing in attractive landscaped gardens adjoining farmland and occupying a pleasant, yet convenient position on the edge of the village. Council Tax band: F

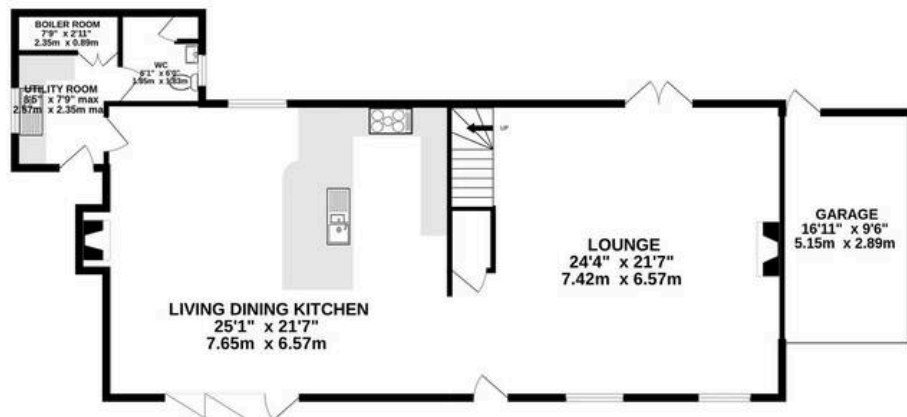
Tenure: Freehold

EPC Energy Efficiency Rating: D

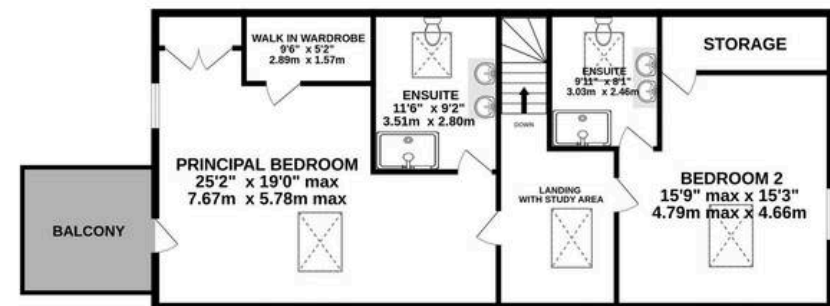
- Modern thatched cottage in pretty village setting
- Spacious and beautifully presented accommodation extending to 2,200sq ft
- Large living kitchen with multi-fuel burning stove
- 2 large bedrooms, both with en-suite facilities and walk-in wardrobes
- Principal bedroom with balcony
- Lovely views to the front and rear over farmland
- Pretty landscaped gardens
- Garage



GROUND FLOOR
1346 sq.ft. (125.0 sq.m.) approx.



1ST FLOOR
1066 sq.ft. (99.1 sq.m.) approx.



TOTAL FLOOR AREA : 2412 sq.ft. (224.1 sq.m.) approx.

Whilst every attempt has been made to ensure the accuracy of the floorplan contained here, measurements of doors, windows, rooms and any other items are approximate and no responsibility is taken for any error, omission or mis-statement. This plan is for illustrative purposes only and should be used as such by any prospective purchaser. The services, systems and appliances shown have not been tested and no guarantee as to their operability or efficiency can be given.

Made with Metropix ©2023



Stuart Rushton & Company

Stuart Rushton & Co, 35 King Street – WA16 6DW

01565 757000

enquiries@srushton.co.uk

www.srushton.co.uk



We are not authorised to make or give any representations or warranties in relation to the property either here or elsewhere. We assume no responsibility for any statement that may be made in these particulars, and they do not form part of any offer or contract and must not be relied upon as statements or representation of fact. Any areas, measurements or distances are approximate. The text, photographs and plans are for guidance only. Importantly, it should not be assumed that the property has all necessary planning, building regulations or other consents and we have not tested any services, equipment or facilities. Purchasers must satisfy themselves by inspection or otherwise.