
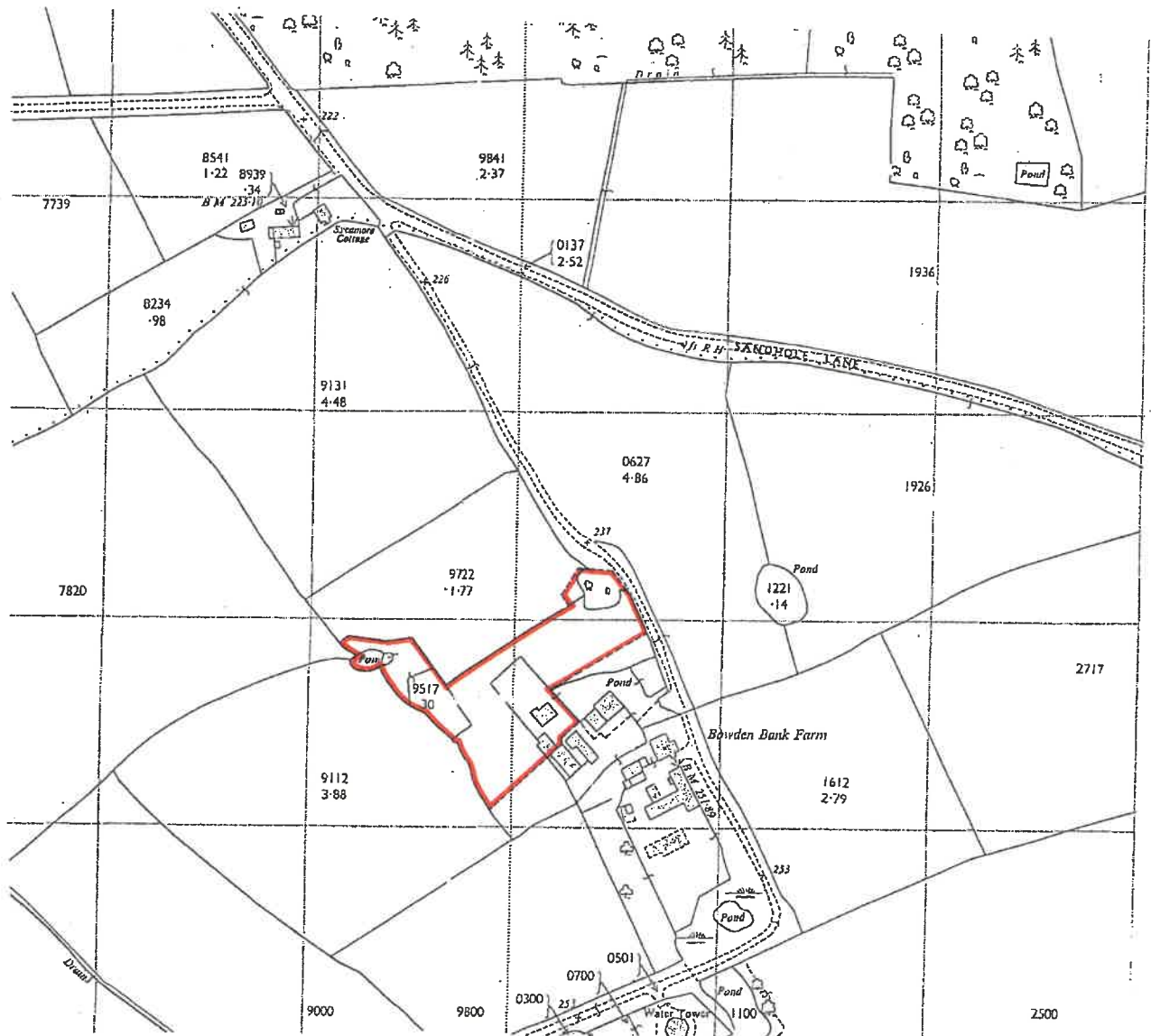


H.M. LAND REGISTRY		TITLE NUMBER		
		CH 441781		
ORDNANCE SURVEY PLANS REFERENCE	SJ7875 SJ7975	SECTION	Scale 1 / 2500	
COUNTY CHESHIRE		DISTRICT MACCLESFIELD	Crown Copyright	

NOTE. AREAS ON THIS PLAN ARE EXPRESSED
IN ACRES AND HECTARES.



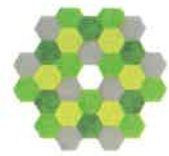
This is a print of the view of the title plan obtained from HM Land Registry showing the state of the title plan on 01 April 2025 at 16:22:05. This title plan shows the general position, not the exact line, of the boundaries. It may be subject to distortions in scale. Measurements scaled from this plan may not match measurements between the same points on the ground.

This title is dealt with by HM Land Registry, Birkenhead Office.

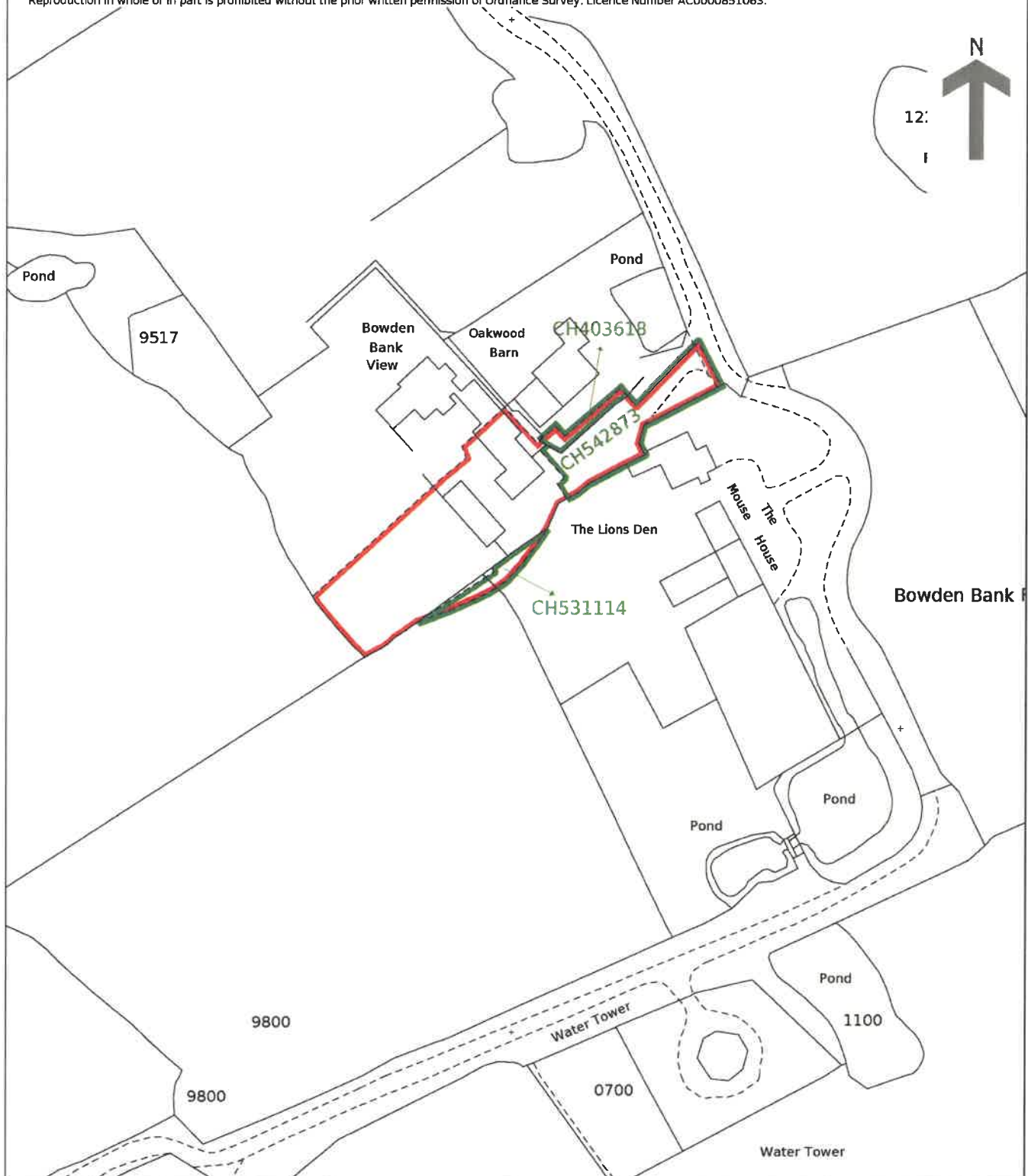
© Crown Copyright. Produced by HM Land Registry. Reproduction in whole or in part is prohibited without the prior written permission of Ordnance Survey. Licence

HM Land Registry Current title plan

Title number **CH391021**
Ordnance Survey map reference **SJ7975SW**
Scale **1:1250 enlarged from 1:2500**
Administrative area **Cheshire East**



©Crown Copyright. Produced by HM Land Registry.
Reproduction in whole or in part is prohibited without the prior written permission of Ordnance Survey. Licence Number AC0000851063.

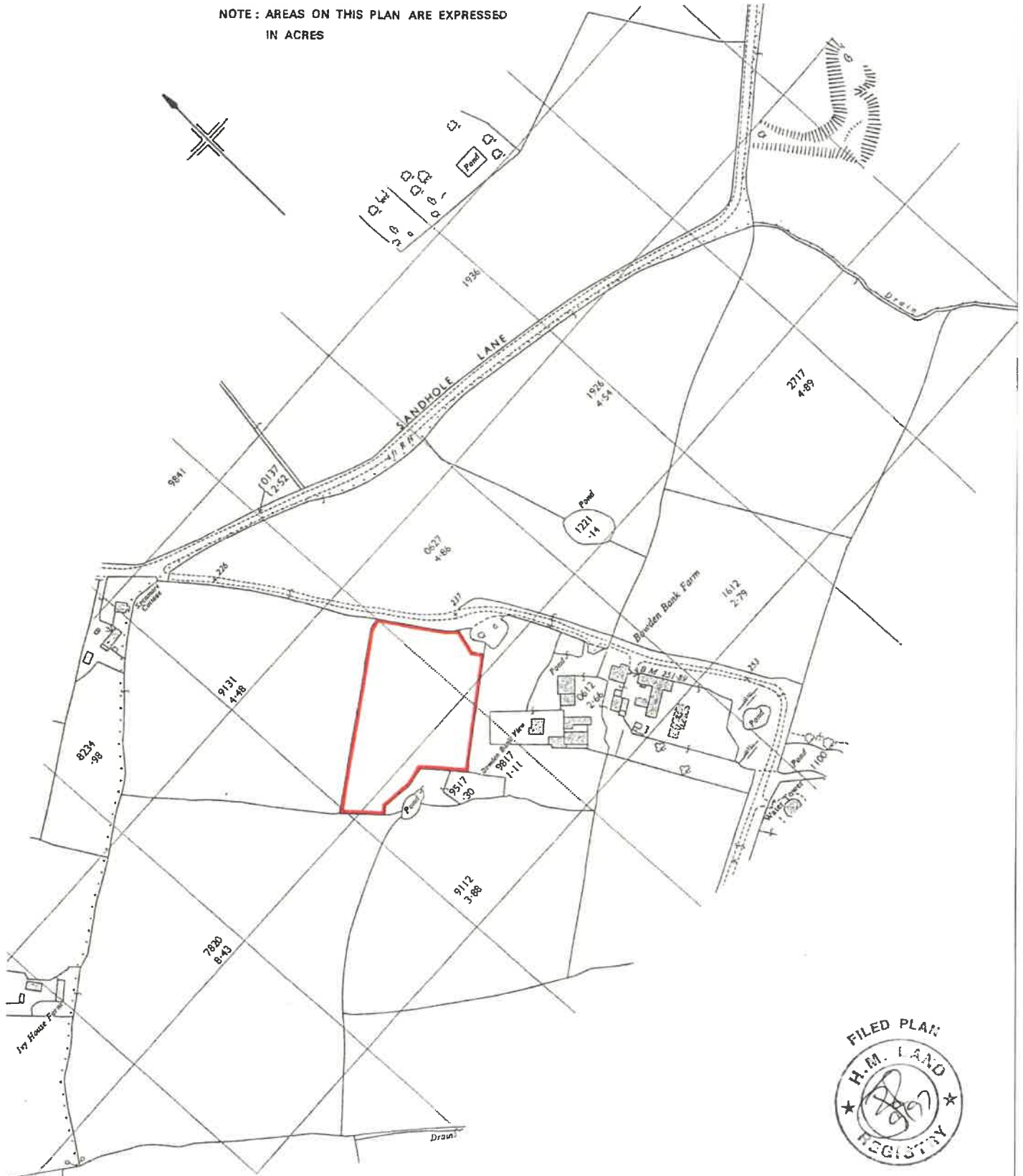


This is a print of the view of the title plan obtained from HM Land Registry showing the state of the title plan on 01 April 2025 at 16:24:20. This title plan shows the general position, not the exact line, of the boundaries. It may be subject to distortions in scale. Measurements scaled from this plan may not match measurements between the same points on the ground.

This title is dealt with by HM Land Registry, Birkenhead Office.

H.M. LAND REGISTRY		TITLE NUMBER	
		CH406594	
ORDNANCE SURVEY PLANS REFERENCE	SJ7875 SJ7975		SCALE 1/2500
ADMINISTRATIVE AREA : CHESHIRE : - MACCLESFIELD			Crown Copyright

NOTE : AREAS ON THIS PLAN ARE EXPRESSED
IN ACRES



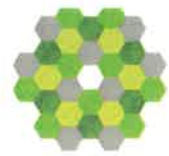
This is a print of the view of the title plan obtained from HM Land Registry showing the state of the title plan on 01 April 2025 at 16:29:44. This title plan shows the general position, not the exact line, of the boundaries. It may be subject to distortions in scale. Measurements scaled from this plan may not match measurements between the same points on the ground.

This title is dealt with by HM Land Registry, Birkenhead Office.

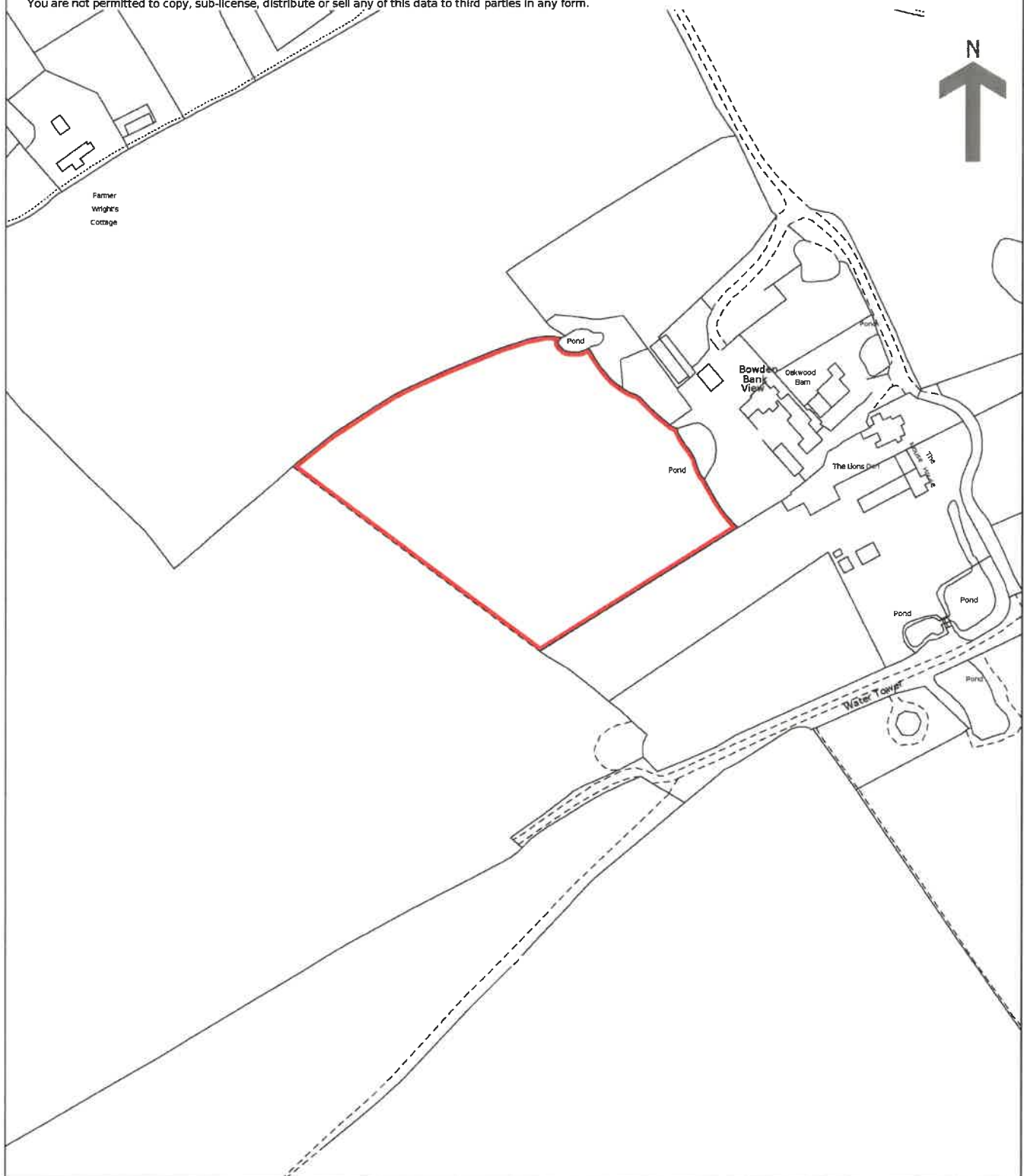
© Crown Copyright. Produced by HM Land Registry. Reproduction in whole or in part is prohibited without the prior written permission of Ordnance Survey. Licence

HM Land Registry Current title plan

Title number **CH705606**
Ordnance Survey map reference **SJ7875SE**
Scale **1:2500**
Administrative area **Cheshire East**



© Crown copyright and database rights 2023 Ordnance Survey AC0000851063.
You are not permitted to copy, sub-license, distribute or sell any of this data to third parties in any form.



This is a print of the view of the title plan obtained from HM Land Registry showing the state of the title plan on 01 April 2025 at 16:25:39. This title plan shows the general position, not the exact line, of the boundaries. It may be subject to distortions in scale. Measurements scaled from this plan may not match measurements between the same points on the ground.

This title is dealt with by HM Land Registry, Birkenhead Office.