







3 Higher Heath

Knutsford Road, Cranage

A spacious detached family house in small modern development with open plan living kitchen, 5 bedrooms, 4 bathrooms, gardens, driveway, and garage. Semi-rural location near Holmes Chapel.

Council Tax band: F

Tenure: Leasehold

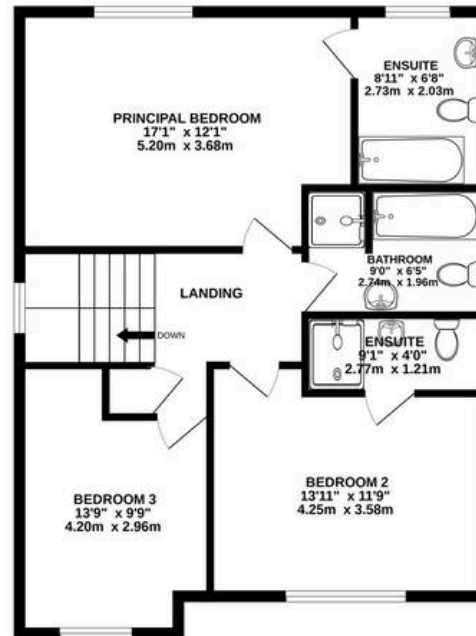
- Modern house in small development close to Holmes Chapel
- Spacious accommodation over three floors
- Open plan living kitchen
- 5 good sized bedrooms
- Garage



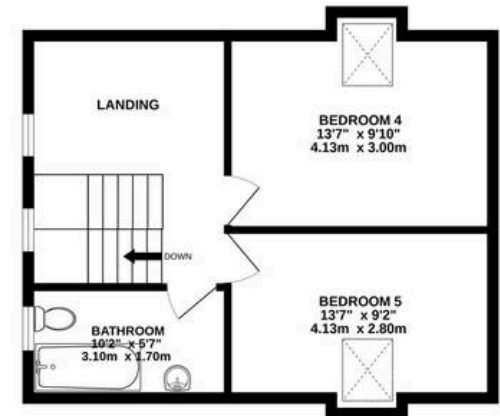
GROUND FLOOR
910 sq.ft. (84.5 sq.m.) approx.



1ST FLOOR
716 sq.ft. (66.5 sq.m.) approx.



2ND FLOOR
442 sq.ft. (41.1 sq.m.) approx.



TOTAL FLOOR AREA : 2033sq.ft. (188.9 sq.m.) approx.

Whilst every attempt has been made to ensure the accuracy of the floorplan contained here, measurements of doors, windows, rooms and any other items are approximate and no responsibility is taken for any error, omission or mis-statement. This plan is for illustrative purposes only and should be used as such by any prospective purchaser. The services, systems and appliances shown have not been tested and no guarantee as to their operability or efficiency can be given.

Made with Metropix ©2022





Stuart Rushton & Company

Stuart Rushton & Co, 35 King Street – WA16 6DW

01565 757000

enquiries@srushton.co.uk

www.srushton.co.uk



We are not authorised to make or give any representations or warranties in relation to the property either here or elsewhere. We assume no responsibility for any statement that may be made in these particulars, and they do not form part of any offer or contract and must not be relied upon as statements or representation of fact. Any areas, measurements or distances are approximate. The text, photographs and plans are for guidance only. Importantly, it should not be assumed that the property has all necessary planning, building regulations or other consents and we have not tested any services, equipment or facilities. Purchasers must satisfy themselves by inspection or otherwise.