













# 8 Holford Crescent

Knutsford

A spacious three bedroom semi-detached house with a large south facing garden, attached garage and off road parking in a superb central location, just a stones throw from King Street, the railway station and all the towns amenities.

Council Tax band: C

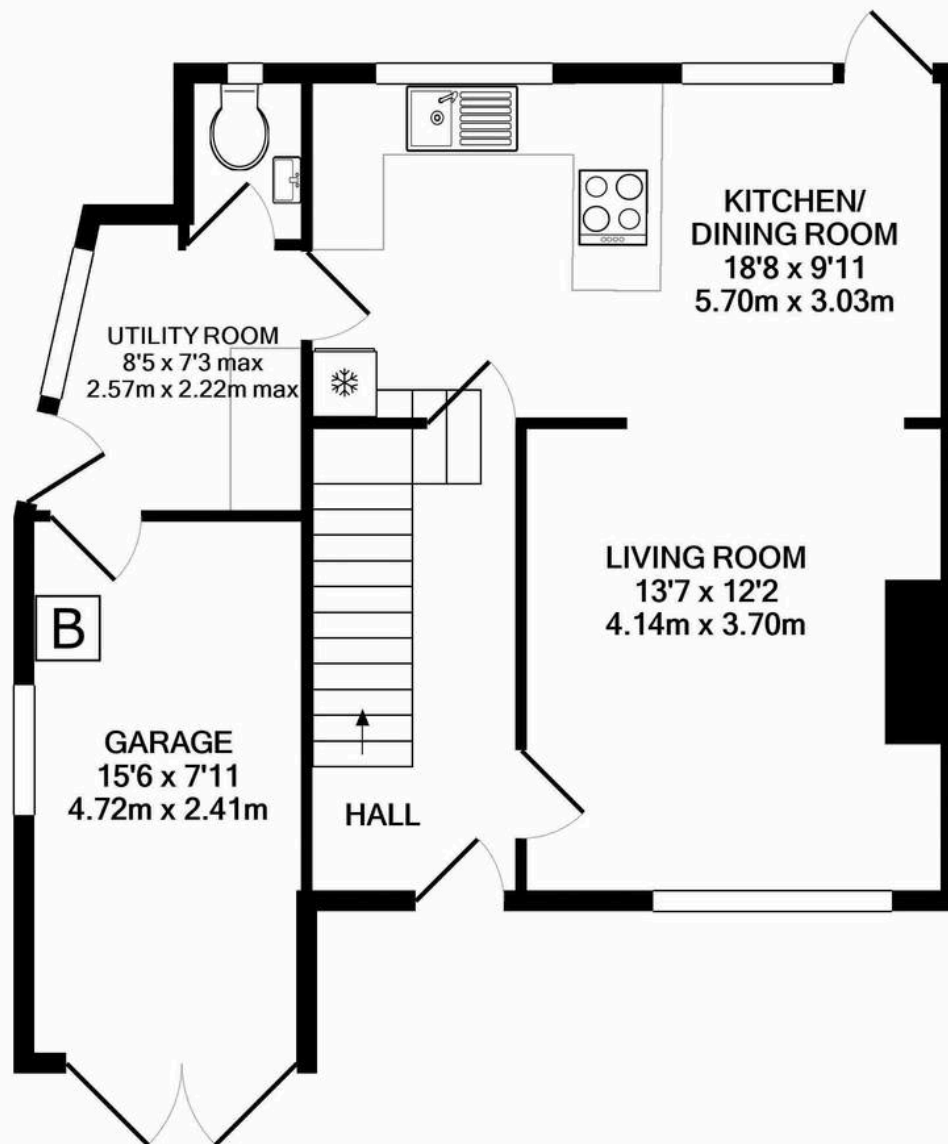
Tenure: Leasehold

EPC Energy Efficiency Rating: D

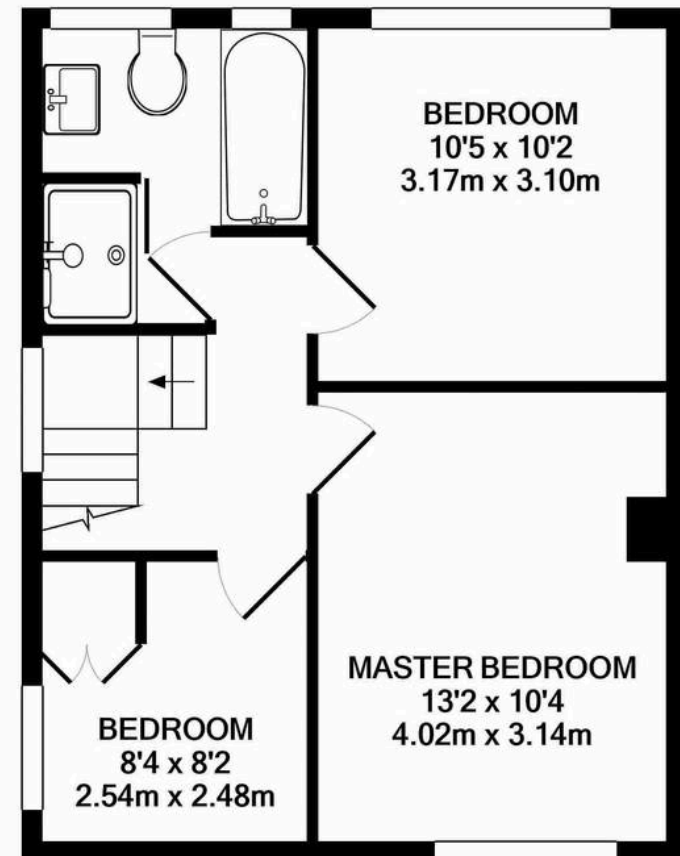
- Superb town centre location
- Garage & off road parking on private driveway
- Mature south facing rear garden
- Three bedrooms, large double reception room, modern fitted kitchen, utility area and wc







GROUND FLOOR  
APPROX. FLOOR  
AREA 619 SQ.FT.  
(57.5 SQ.M.)



1ST FLOOR  
APPROX. FLOOR  
AREA 429 SQ.FT.  
(39.8 SQ.M.)

**TOTAL APPROX. FLOOR AREA 1048 SQ.FT. (97.3 SQ.M.)**

Whilst every attempt has been made to ensure the accuracy of the floor plan contained here, measurements of doors, windows, rooms and any other items are approximate and no responsibility is taken for any error, omission, or mis-statement. This plan is for illustrative purposes only and should be used as such by any prospective purchaser. The services, systems and appliances shown have not been tested and no guarantee as to their operability or efficiency can be given

Made with Metropix ©2019





## Stuart Rushton & Company

Stuart Rushton & Co, 35 King Street – WA16 6DW

01565 757000

[enquiries@srushton.co.uk](mailto:enquiries@srushton.co.uk)

[www.srushton.co.uk](http://www.srushton.co.uk)



We are not authorised to make or give any representations or warranties in relation to the property either here or elsewhere. We assume no responsibility for any statement that may be made in these particulars, and they do not form part of any offer or contract and must not be relied upon as statements or representation of fact. Any areas, measurements or distances are approximate. The text, photographs and plans are for guidance only. Importantly, it should not be assumed that the property has all necessary planning, building regulations or other consents and we have not tested any services, equipment or facilities. Purchasers must satisfy themselves by inspection or otherwise.