







Wyncote, Middlewich Road

Allostock, Knutsford

"Wyncote," a charming 3-bed, 2-bath period home on a ¼ acre plot near Lower Peover. Rural location by Shakerley Mere and country pubs. Potential for renovation or extension. Peaceful setting with garage and kitchen/utility outbuilding. Characterful features and mature gardens. Ideal for buyers seeking charm, space, and lifestyle potential.

Council Tax band: G

Tenure: Freehold

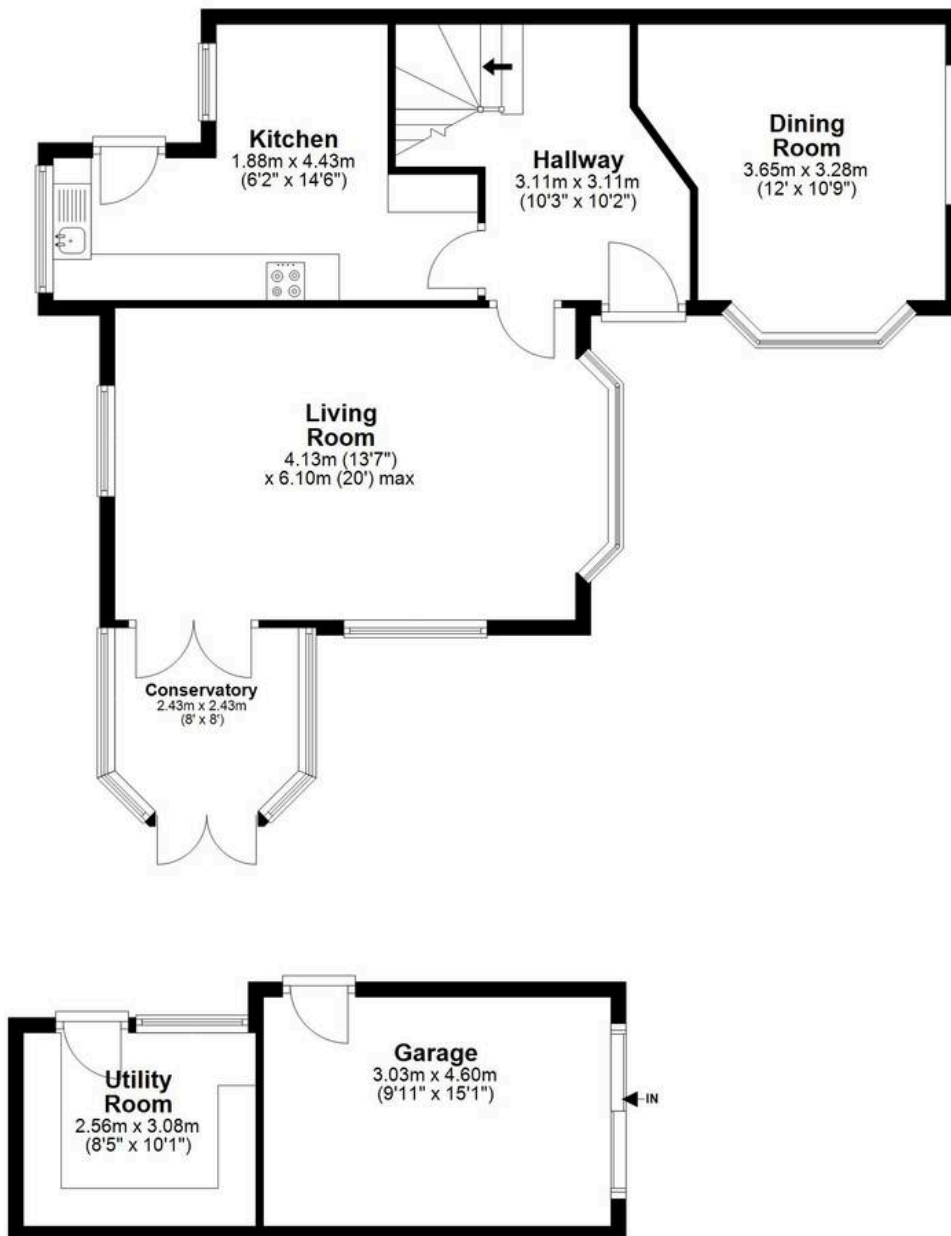
EPC Energy Efficiency Rating: E

- Three bedroom and two bathroom semi detached with great potential
- Total plot size around 1/4 acre with great maturity and privacy
- Popular position near Shakerley Mere, Lower Peover village, Knutsford and the motorway network
- Enclosed frontage with gates, garage and additional kitchen/utility area
- No onward chain
- Great renovation project



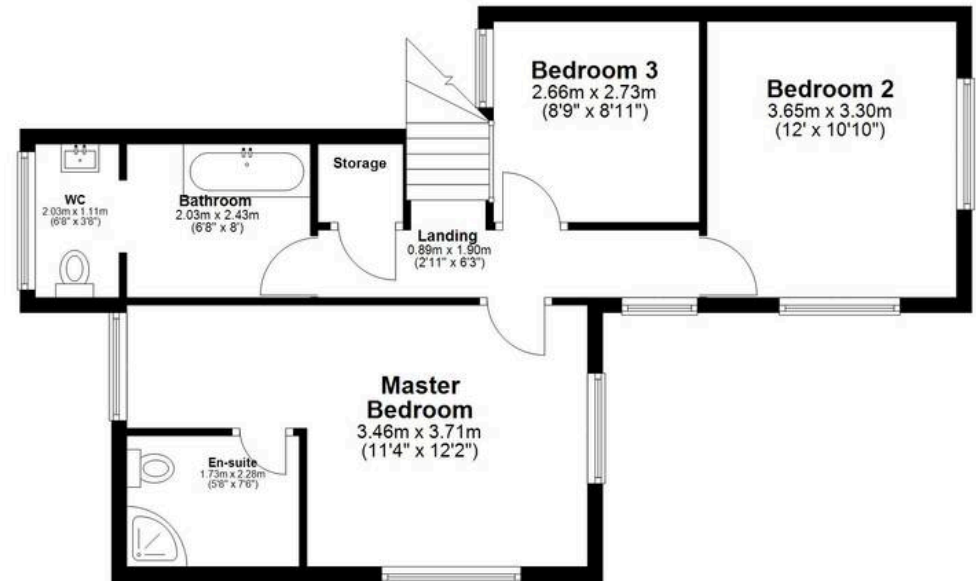
Ground Floor

Approx. 79.8 sq. metres (858.9 sq. feet)



First Floor

Approx. 55.3 sq. metres (595.7 sq. feet)



Total area: approx. 135.1 sq. metres (1454.5 sq. feet)



Stuart Rushton & Company

Stuart Rushton & Co, 35 King Street – WA16 6DW

01565 757000

enquiries@srushton.co.uk

www.srushton.co.uk



We are not authorised to make or give any representations or warranties in relation to the property either here or elsewhere. We assume no responsibility for any statement that may be made in these particulars, and they do not form part of any offer or contract and must not be relied upon as statements or representation of fact. Any areas, measurements or distances are approximate. The text, photographs and plans are for guidance only. Importantly, it should not be assumed that the property has all necessary planning, building regulations or other consents and we have not tested any services, equipment or facilities. Purchasers must satisfy themselves by inspection or otherwise.