









Heath House Gaskell Avenue

Knutsford

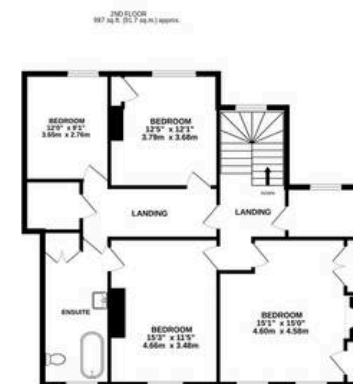
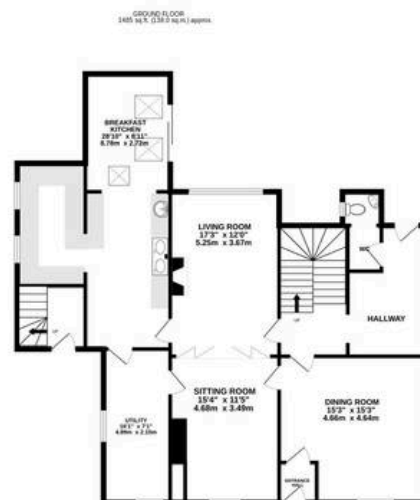
Heath House, a Grade II listed townhouse on Gaskell Avenue in Knutsford, offers historic charm, extensive space, a large garden, parking for 3 cars, and a double garage. Ideal for modernisation. Close to amenities and schools, with great transport links.

Council Tax band: F

Tenure: Freehold

- Landmark Grade II listed townhouse in central Knutsford
- Historic former home of 18th-century highwayman Edward Higgins
- Over 5,100 sq ft across four floors including extensive cellars
- Elegant period features throughout, including sash windows and oak flooring
- Five spacious bedrooms, three reception rooms, and a vaulted ceiling landing
- Large rear garden, detached double garage, and parking for up to three vehicles
- Set on a no-through road overlooking Little Heath and The Heath
- Short walk to Knutsford town centre, train station, and Tatton Park





TOTAL FLOOR AREA : 5159 sq.ft. (479.3 sq.m.) approx.

Whilst every attempt has been made to ensure the accuracy of the floorplan contained here, measurements of doors, windows, rooms and any other items are approximate and no responsibility is taken for any error, omission or mis-statement. This plan is for illustrative purposes only and should be used as such by any prospective purchaser. The services, systems and appliances shown have not been tested and no guarantee as to their operability or efficiency can be given.

Made with Metropix ©2025





Stuart Rushton & Company

Stuart Rushton & Co, 35 King Street – WA16 6DW

01565 757000

enquiries@srushton.co.uk

www.srushton.co.uk



We are not authorised to make or give any representations or warranties in relation to the property either here or elsewhere. We assume no responsibility for any statement that may be made in these particulars, and they do not form part of any offer or contract and must not be relied upon as statements or representation of fact. Any areas, measurements or distances are approximate. The text, photographs and plans are for guidance only. Importantly, it should not be assumed that the property has all necessary planning, building regulations or other consents and we have not tested any services, equipment or facilities. Purchasers must satisfy themselves by inspection or otherwise.