



16 George Street

Knutsford

A spacious property near Tatton Park and the town centre. Features include a bay-fronted living room, extended kitchen/dining area, private courtyard-style garden, 3 bedrooms, and compact bathroom. No onward chain, ideal for quick buyers.

Council Tax band: C

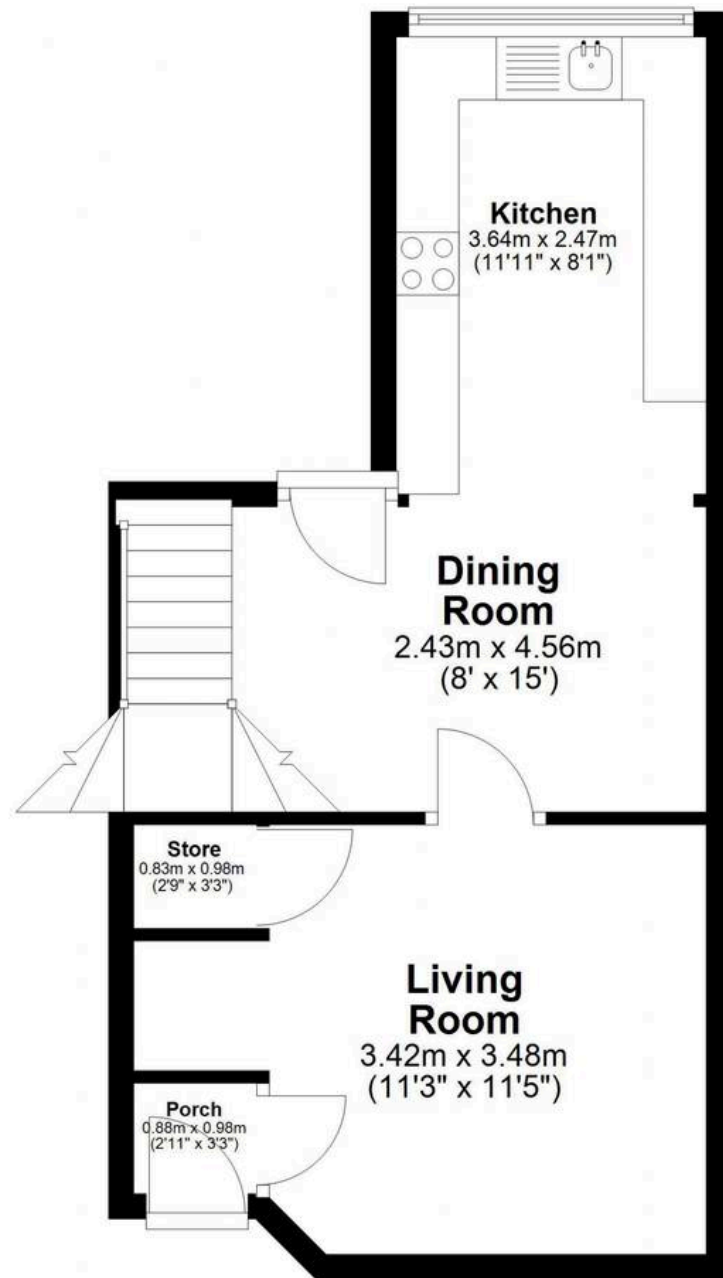
Tenure: Freehold

EPC Energy Efficiency Rating: D

EPC Environmental Impact Rating: E

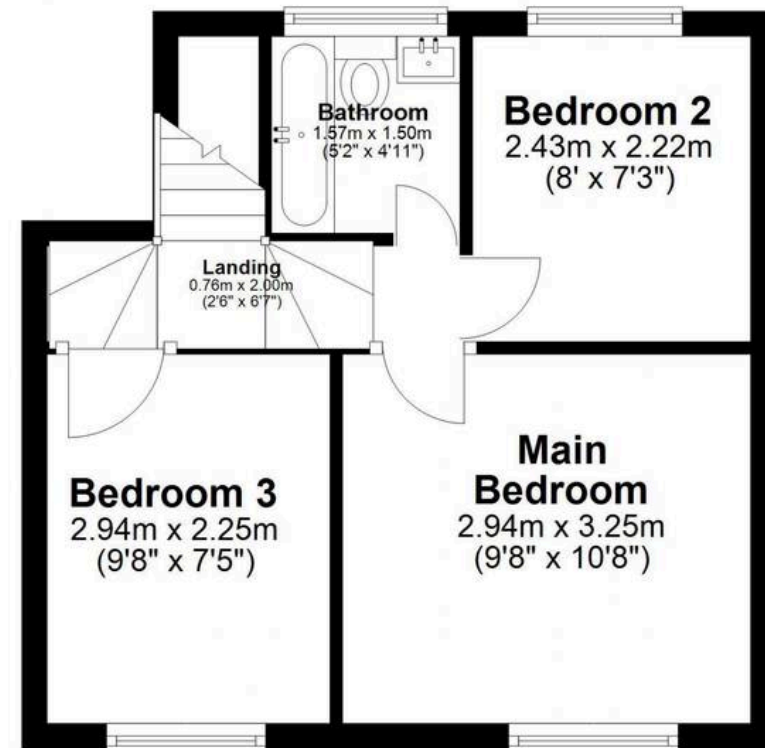
- In the heart of the town, minutes walk from Tatton Park and the town centre
- Three good sized bedrooms
- Extended kitchen/diner plus cosy bay-fronted lounge
- Rear courtyard style garden with good privacy
- No onward chain





Ground Floor

Approx. 35.8 sq. metres (384.8 sq. feet)



First Floor

Approx. 28.9 sq. metres (311.1 sq. feet)

Total area: approx. 64.7 sq. metres (695.9 sq. feet)



Stuart Rushton & Company

Stuart Rushton & Co, 35 King Street – WA16 6DW

01565 757000

enquiries@srushton.co.uk

www.srushton.co.uk



We are not authorised to make or give any representations or warranties in relation to the property either here or elsewhere. We assume no responsibility for any statement that may be made in these particulars, and they do not form part of any offer or contract and must not be relied upon as statements or representation of fact. Any areas, measurements or distances are approximate. The text, photographs and plans are for guidance only. Importantly, it should not be assumed that the property has all necessary planning, building regulations or other consents and we have not tested any services, equipment or facilities. Purchasers must satisfy themselves by inspection or otherwise.