



17 Appleby Crescent

Mobberley

An attractive, spacious modern Georgian style semi detached house on a popular and sought after development in the middle of the village conservation area.

Council Tax band: F

Tenure: Leasehold

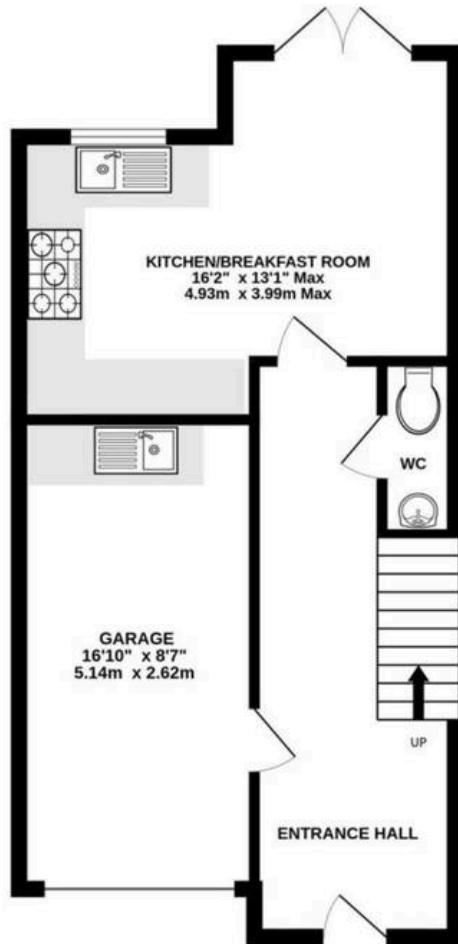
EPC Rating: C

- Spacious, refurbished semi detached modern house
- Super central position in the village conservation area, in a quiet cul de sac
- Driveway and integral garage

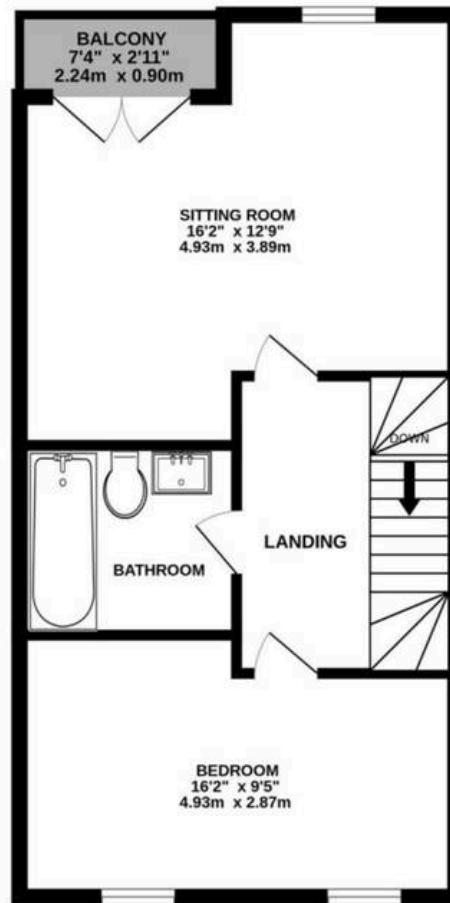
Appleby Crescent is a development of modern townhouses and apartments constructed just over 20 years ago. Number 17 is one of an excellent design - the accommodation is over three floors and very well laid out. It is ready to move into straight away, the internal doors have all been replaced with solid oak doors. The kitchen and bathrooms have been refreshed since their full refurbishment, there are plantation shutters, and the house was redecorated externally in 2024. It feels bright and airy and is flooded with natural light.



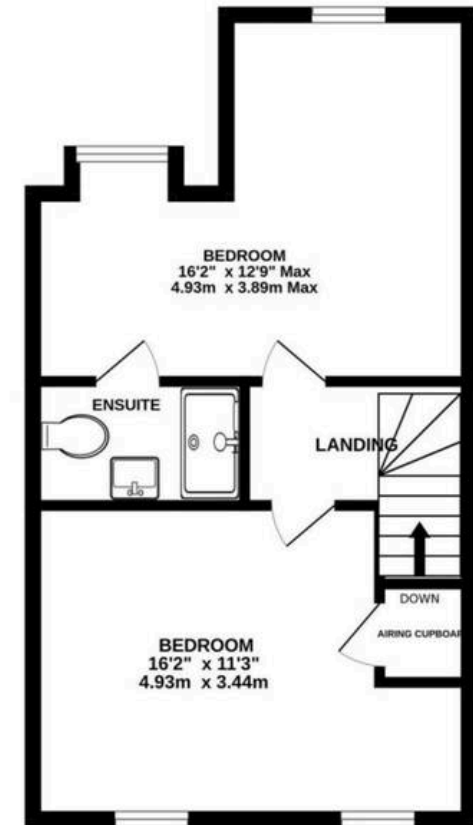
GROUND FLOOR
462 sq.ft. (42.9 sq.m.) approx.



1ST FLOOR
476 sq.ft. (44.2 sq.m.) approx.



2ND FLOOR
414 sq.ft. (38.5 sq.m.) approx.



TOTAL FLOOR AREA : 1360sq.ft. (126.3 sq.m.) approx.

Measurements are approximate. Not to scale. Illustrative purposes only
Made with Metropix ©2024



Stuart Rushton & Company

Stuart Rushton & Co, 35 King Street – WA16 6DW

01565 757000

enquiries@srushton.co.uk

www.srushton.co.uk



We are not authorised to make or give any representations or warranties in relation to the property either here or elsewhere. We assume no responsibility for any statement that may be made in these particulars, and they do not form part of any offer or contract and must not be relied upon as statements or representation of fact. Any areas, measurements or distances are approximate. The text, photographs and plans are for guidance only. Importantly, it should not be assumed that the property has all necessary planning, building regulations or other consents and we have not tested any services, equipment or facilities. Purchasers must satisfy themselves by inspection or otherwise.