







1 Hope Cottages

Pepper Street, Snelson

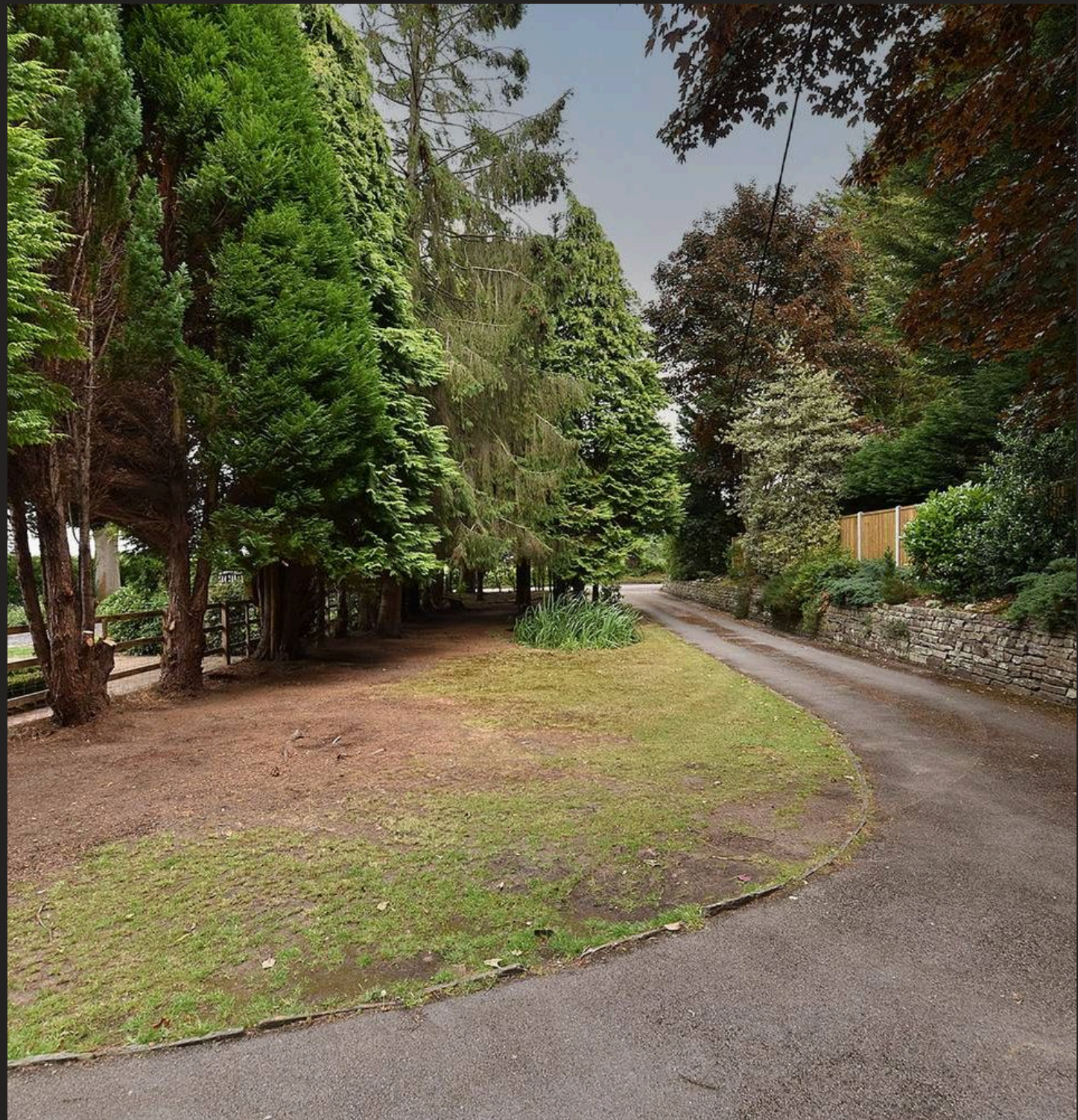
In the heart of Snelson, 1 Hope Cottage is a Victorian semi with 3 beds, original features, spacious garden, and potential for extension. Unique gem in desirable Cheshire parish.

Council Tax band: F

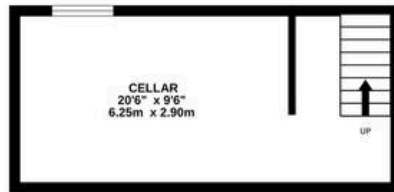
Tenure: Freehold

EPC Energy Efficiency Rating: F

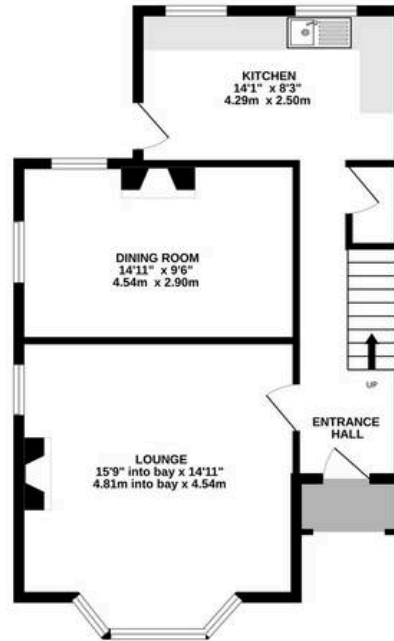
- Handsome Victorian semi-detached home with imposing façade, set on a near quarter-acre plot in the heart of prestigious Snelson.
- Positioned centrally within mature grounds, featuring a deep frontage, private rear garden, and garage.
- Retains original period charm with high ceilings, sash-style windows, and decorative details throughout.
- Spacious interior offering three bedrooms, two bathrooms, two reception rooms, cellar chambers and a large loft, ripe for conversion (STPP)
- Located in a highly prized setting among notable residents and distinguished properties.
- Fantastic potential for extension or development, following the example of neighbouring homes (STPP).
- No onward chain.



BASEMENT
195 sq.ft. (18.1 sq.m.) approx.



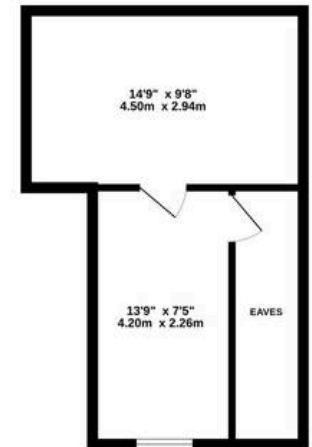
GROUND FLOOR
560 sq.ft. (52.0 sq.m.) approx.



1ST FLOOR
569 sq.ft. (52.8 sq.m.) approx.



LOFT
299 sq.ft. (27.7 sq.m.) approx.



TOTAL FLOOR AREA : 1622 sq.ft. (150.7 sq.m.) approx.

Whilst every attempt has been made to ensure the accuracy of the floorplan contained here, measurements of doors, windows, rooms and any other items are approximate and no responsibility is taken for any error, omission or mis-statement. This plan is for illustrative purposes only and should be used as such by any prospective purchaser. The services, systems and appliances shown have not been tested and no guarantee as to their operability or efficiency can be given.

Made with Metropix ©2025



Stuart Rushton & Company

Stuart Rushton & Co, 35 King Street – WA16 6DW

01565 757000

enquiries@srushton.co.uk

www.srushton.co.uk



We are not authorised to make or give any representations or warranties in relation to the property either here or elsewhere. We assume no responsibility for any statement that may be made in these particulars, and they do not form part of any offer or contract and must not be relied upon as statements or representation of fact. Any areas, measurements or distances are approximate. The text, photographs and plans are for guidance only. Importantly, it should not be assumed that the property has all necessary planning, building regulations or other consents and we have not tested any services, equipment or facilities. Purchasers must satisfy themselves by inspection or otherwise.