



**Flat 5, 1-27 St. Faiths Street, Maidstone**

Guide Price **£190,000 - £210,000**







Welcome to this beautifully presented two-bedroom first-floor apartment, perfectly located in the bustling town centre. This delightful residence offers a comfortable and convenient lifestyle, with an array of amenities right at your doorstep.

As you step inside, you'll be greeted by a generously proportioned hallway, setting the tone for the spaciousness and comfort that defines this apartment.

The apartment boasts two well-appointed double bedrooms. The main bedroom comes complete with convenient built-in storage and its own en-suite shower room, providing you with a private sanctuary to relax and unwind.

You'll find additional built-in storage in the hallway, ensuring you have plenty of space to keep your belongings organized and out of sight.

Enjoy the convenience of a separate family bathroom, making mornings and evenings a breeze for both residents and guests.

The heart of this apartment is the open-plan kitchen and living area, designed to create a harmonious flow of space and light. Dual aspect windows flood the room with natural light, creating a warm and inviting atmosphere that's perfect for both relaxation and entertainment.

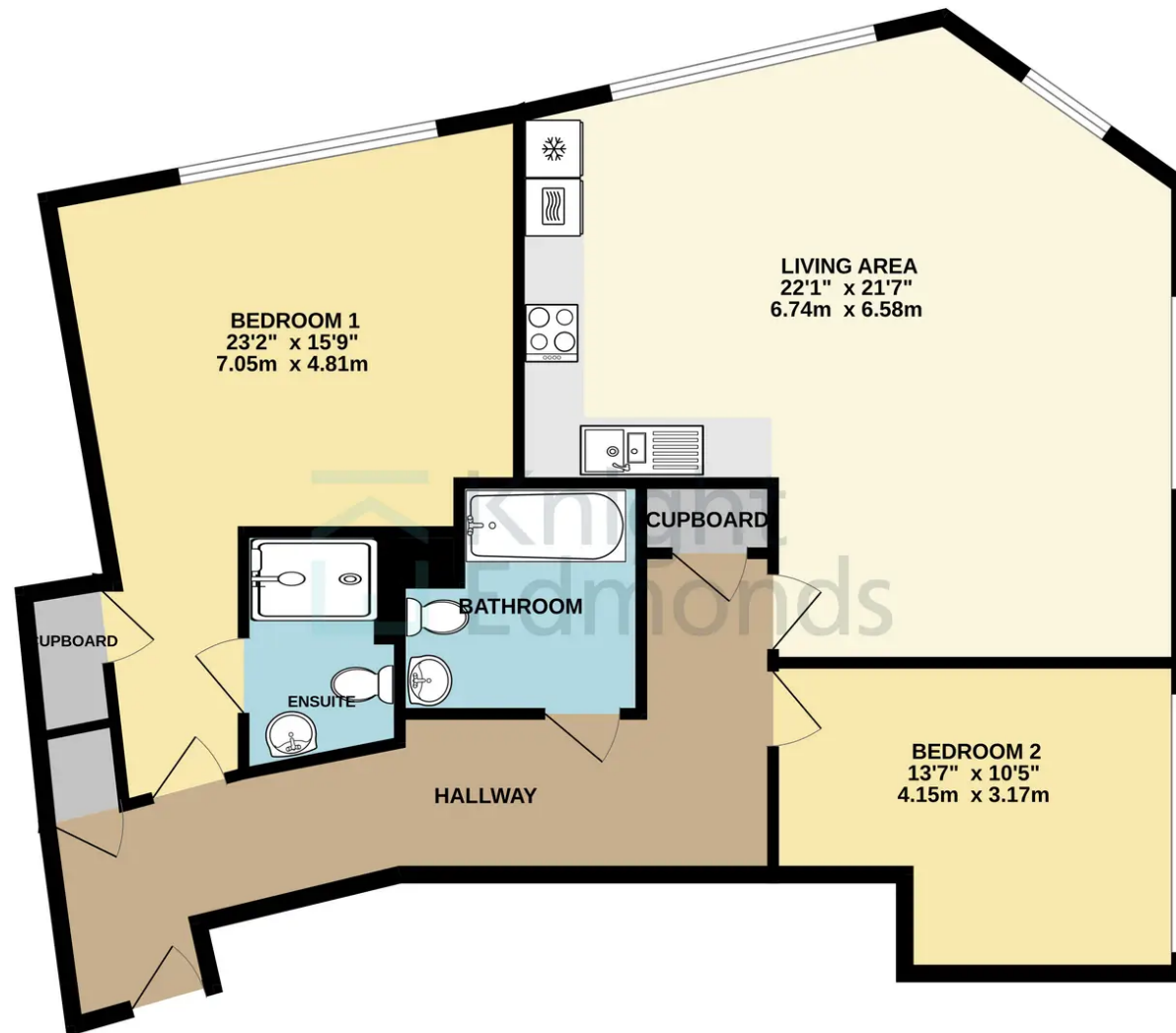
Situated on the first floor of the building, this apartment offers the ideal blend of urban living and comfort. With its central location, you'll have easy access to a wide range of shops, restaurants, cafes, and cultural attractions. Whether you're strolling through the town square or enjoying the vibrant nightlife, everything you need is just a stone's throw away.

This apartment represents an excellent opportunity for individuals or couples looking to enjoy the best of town centre living. Don't miss your chance to make this delightful space your own.

Contact us today to arrange a viewing and discover the charm and convenience of this first-floor gem!



1006 sq.ft. (93.5 sq.m.) approx.



Scan to  
view  
online!



Scan to  
book a  
viewing!



TOTAL FLOOR AREA : 1006 sq.ft. (93.5 sq.m.) approx.

Whilst every attempt has been made to ensure the accuracy of the floorplan contained here, measurements of doors, windows, rooms and any other items are approximate and no responsibility is taken for any error, omission or mis-statement. This plan is for illustrative purposes only and should be used as such by any prospective purchaser. The services, systems and appliances shown have not been tested and no guarantee as to their operability or efficiency can be given.

Made with Metropix ©2023

