 Knight  
Edmonds

## Joy Wood, Boughton Monchelsea

Guide Price £450,000 – £500,000



# Joy Wood

Boughton Monchelsea, Maidstone

Well-presented 4-bed family home with open layout, cosy lounge, dining room with garden access, spacious kitchen with integrated appliances, convenient w.c. Upper floor features 4 bedrooms, 3 with built-in wardrobes, main bedroom with en-suite. Landscaped front garden, driveway, garage. Low maintenance rear garden with artificial turf, outbuilding serving as office space. Excellent transport links. A perfect home for a growing family. Don't miss out! Contact us for a viewing.

Council Tax band: E

Tenure: Freehold

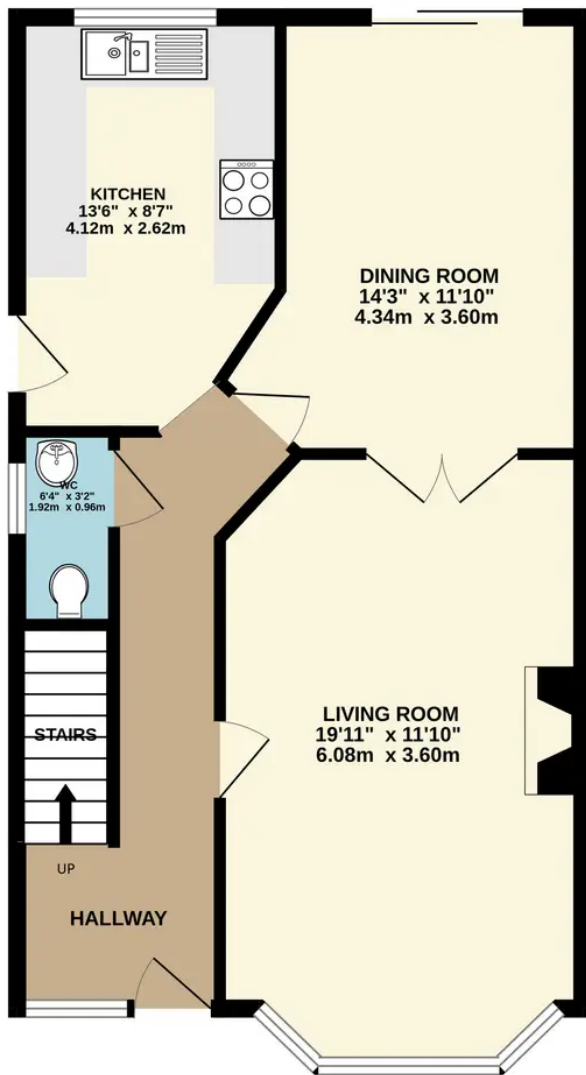
EPC Energy Efficiency Rating: C

EPC Environmental Impact Rating: D

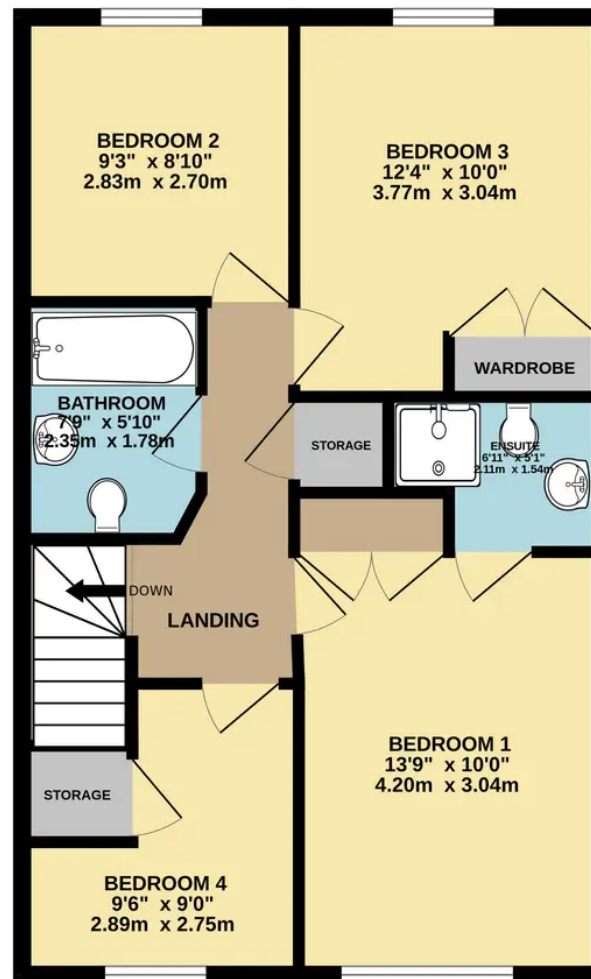
- GUIDE PRICE £450,000 - £500,000
- CHAIN FREE
- EN-SUITE AND FAMILY BATHROOM
- GARAGE AND DRIVEWAY
- USEFUL DOWNSTAIRS CLOAKROOM
- OUTBUILDING WITH POWER



GROUND FLOOR  
603 sq.ft. (56.1 sq.m.) approx.



1ST FLOOR  
588 sq.ft. (54.7 sq.m.) approx.



Scan to  
view  
online!

Scan to  
book a  
viewing!



TOTAL FLOOR AREA : 1192 sq.ft. (110.7 sq.m.) approx.

Whilst every attempt has been made to ensure the accuracy of the floorplan contained here, measurements of doors, windows, rooms and any other items are approximate and no responsibility is taken for any error, omission or mis-statement. This plan is for illustrative purposes only and should be used as such by any prospective purchaser. The services, systems and appliances shown have not been tested and no guarantee as to their operability or efficiency can be given.  
Made with Metropix ©2023

