



Ash Tree House, Forthampton
Gloucester

Guide Price **£650,000**



Ash Tree House

Forthampton, Gloucestershire

- NO ONWARD CHAIN – Beautifully presented 4 double bedroom detached property
- Delightful panoramic views across the local countryside
- Bright dual aspect living room which is flooded with natural light from the adjoining conservatory and enhanced by a wood burner, creating a cosy focal point
- Conservatory offering panoramic views over the garden and open fields to the rear
- Kitchen/breakfast/family room featuring sleek grey cabinetry, a range cooker and views across the local countryside
- Spacious entrance hall, cloakroom & galleried landing
- Primary bedroom with en-suite shower room, three additional double bedrooms & a family bathroom
- Spacious plot with ample parking & a rear garden with a large patio area and lawn, enjoying panoramic views across the local countryside
- Double garage with workshop area

Council Tax band: F

Tenure: Freehold

EPC Energy Efficiency Rating: D

 **JONES & ASSOCIATES**
BESPOKE ESTATE AGENCY



NO ONWARD CHAIN – A beautifully presented four-bedroom detached home set in an elevated position, enjoying far-reaching views across the Gloucestershire countryside.

This exceptional property offers generous and versatile living space, designed to make the most of its stunning rural surroundings. The bright dual-aspect living room is enhanced by a wood burner, providing a cosy focal point, and flows seamlessly into the conservatory where panoramic views over the garden and open fields can be enjoyed year-round.

The heart of the home is the stylish kitchen/breakfast/family room, complete with sleek grey cabinetry, a range cooker and countryside views. A separate dining room provides further flexibility, ideal for entertaining or as a second reception space. The welcoming entrance hall, cloakroom, and galleried landing add a sense of space and elegance throughout.

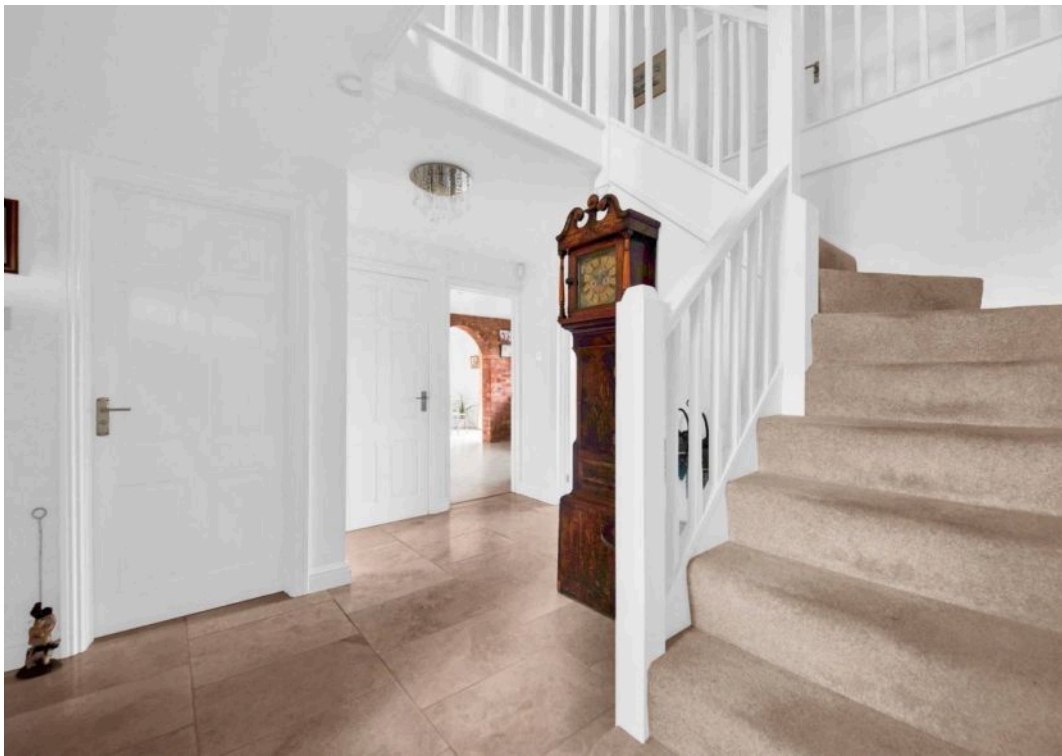
Upstairs, the property offers four well-proportioned double bedrooms. The primary bedroom benefits from a private en-suite shower room, while the remaining bedrooms are served by a modern family bathroom.

Externally, the property sits within a generous plot, featuring ample parking and a double garage with workshop area. The rear garden has been designed to make the most of the breathtaking views, with a large patio and lawn creating the perfect setting for relaxation or entertaining.

Forthampton is a picturesque village nestled in the heart of the Gloucestershire countryside, offering an idyllic and peaceful lifestyle for those seeking a rural retreat. Surrounded by rolling farmland and natural beauty, the village provides a tranquil setting while still being within easy reach of nearby towns such as Tewkesbury and Cheltenham, which offer a wide range of shops, schools, and recreational facilities.





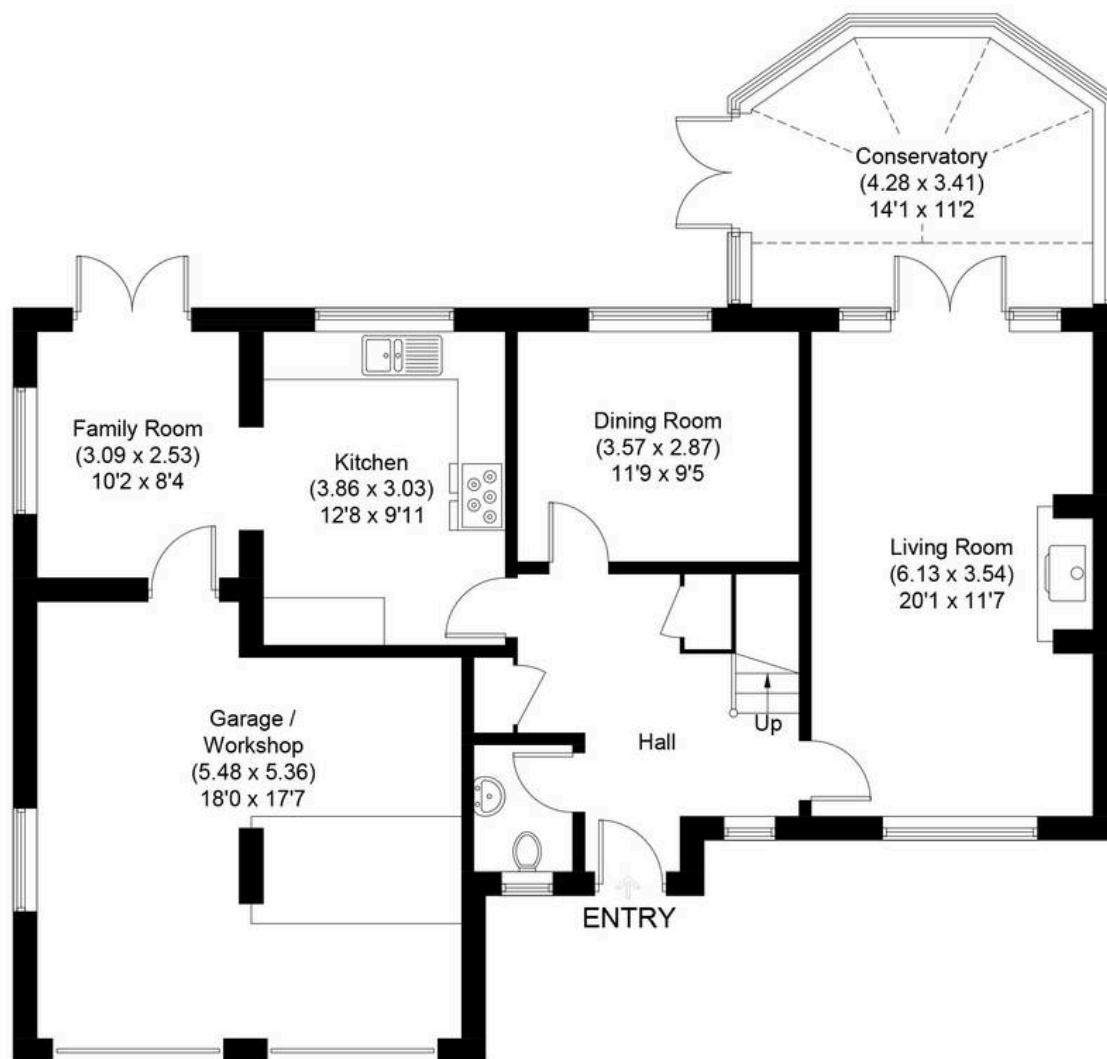






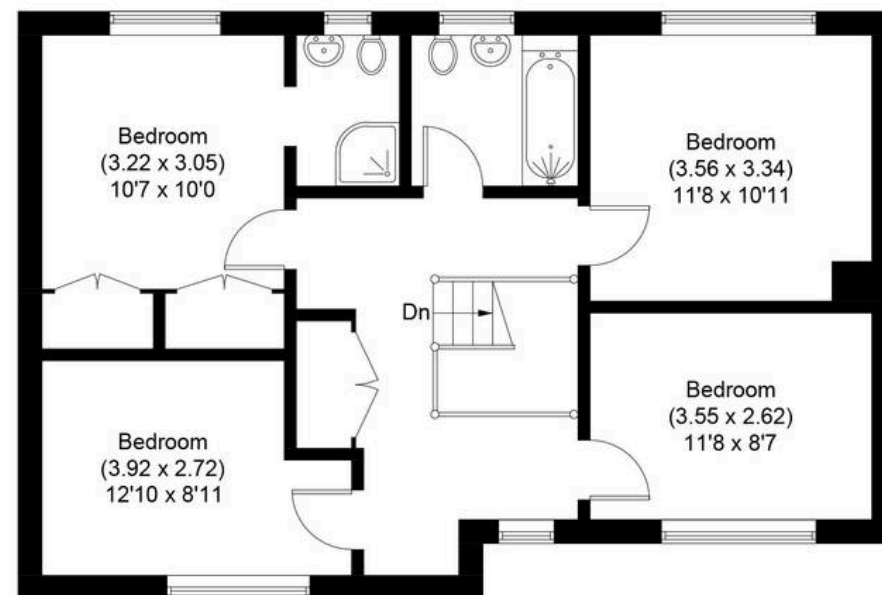
Ash Tree House, Forthampton

Approximate Gross Internal Area
Ground Floor = 113.4 sq m / 1221 sq ft
(Including Garage / Workshop)
First Floor = 67.4 sq m / 725 sq ft
Total = 180.8 sq m / 1946 sq ft



Ground Floor

Illustration for identification purposes only, measurements are approximate, not to scale.



First Floor



Jones & Associates

14 Bridge Street, Pershore - WR10 1AT

01386 291010 • info@jjaa.co.uk • www.jjaa.co.uk/