



**Pacey
Wingent
Dickson.**

INDEPENDENT PROPERTY AGENTS

*Helping the perfect property find you...
...time is precious. Let's not waste it!*

Springfield Road, Guildford, GU1

£2,600PCM (Deposit: £3,000)

🛏️ 3 📺 1 🚗 2

- Detached
- Three bedrooms
- Central location
- Quiet cul de sac
- Moments from the high street and stations
- Period property
- Off-street parking
- Garden
- Open plan kitchen
- Easy access to A3/A31/M25



Tax Band: E Furnished: Unfurnished

This charming detached Victorian home, located just off the historic cobbled high street, blends original character with modern updates. The ground floor features two living rooms, including a cozy sitting room with a cast iron fireplace, and a spacious open-plan kitchen/dining/family room perfect for everyday living. The kitchen is equipped with wooden units, a seven-burner gas range, fridge/freezer, and a dishwasher. The dining/family area opens to the garden, creating an ideal space for family and entertaining. Upstairs, the home offers a generous landing, a front-facing main bedroom, two additional bedrooms, and a tiled bathroom. The property also benefits from off-street parking. Ideally located just moments from popular schools, Guildford High Street and mainline train stations, it provides easy access to local amenities and excellent transport links by road or rail.



Springfield Road, Guildford, GU1 4DP

Approximate Gross Internal Area = 90.6 sq m / 975 sq ft

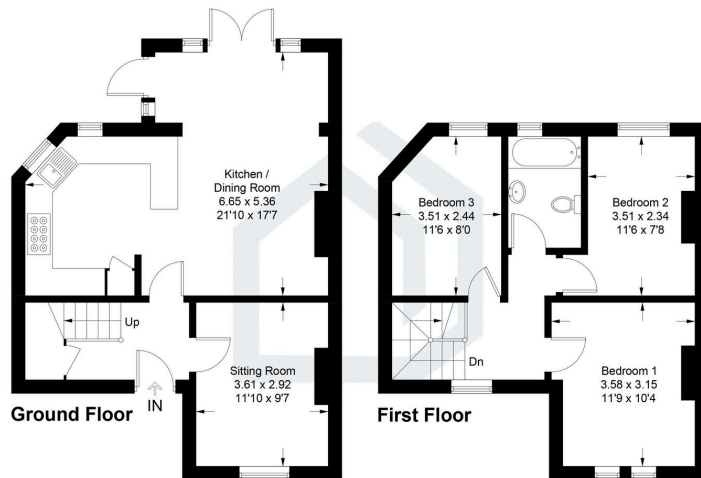


Illustration for identification purposes only, measurements are approximate, not to scale. Fourlabe.co © (ID1172324)

