



INDEPENDENT PROPERTY AGENTS

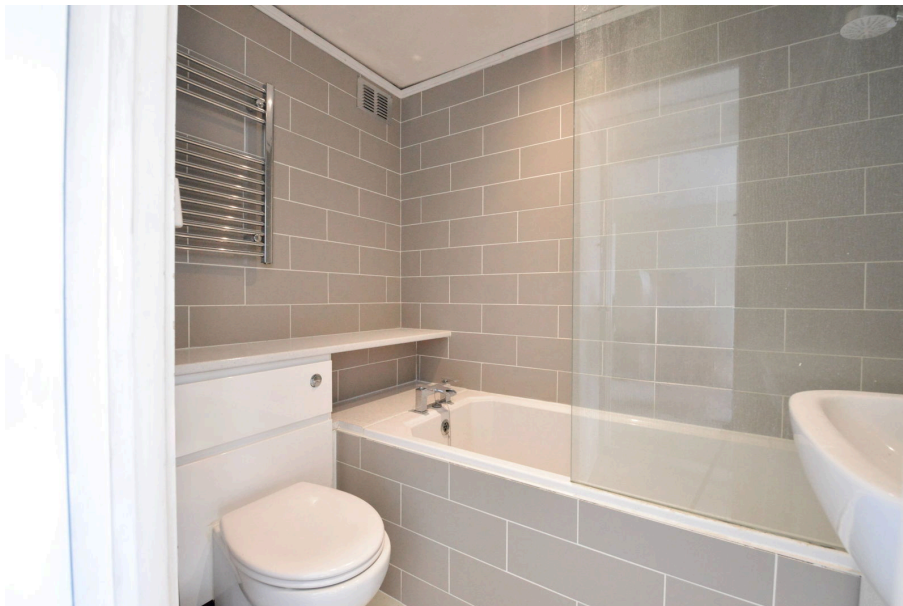
*Helping the perfect property find you...
...time is precious. Let's not waste it!*

Eastgate Gardens, Guildford, GU1 4AY

£1,300PCM (Deposit: £1,615)

🛏 1 🍳 1 🛋 1

- One bedroom flat
- 4th floor with lift
- Balcony overlooking the high street
- Bright and spacious
- Smart bathroom
- Modern kitchen
- Built in storage
- Large reception room
- Easy access to the train stations
- Close to the University of Surrey



Tax Band: B Furnished: Furnished

A one bedroom 4th floor apartment. The accommodation comprises a good size living room leading out to a balcony with incredible views overlooking Guildford's historic high street.

There is a fully fitted kitchen, large bedroom with built in storage and smart bathroom. Located in the heart of Guildford town centre which offers a wide range of boutique shops, restaurants and public houses.

Both London Road station and Guildford mainline station are easily accessible with the latter providing a regular fast service to London Waterloo. The A3 is within easy reach offering excellent transport links to London, M25 and south coast.



Eastgate Gardens, Guildford, GU1 4AY

Approximate Gross Internal Area = 41.9 sq m / 451 sq ft

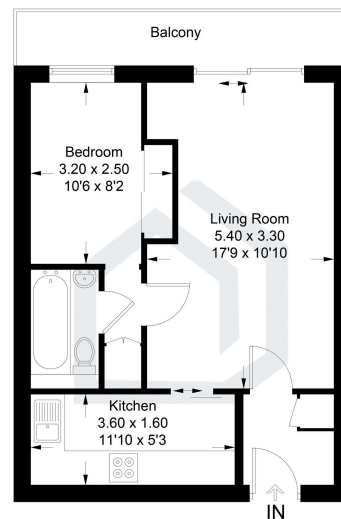


Illustration for identification purposes only; measurements are approximate, not to scale. Fourlaba.co © (01189641)

