




## Hawker Drive, Addlestone, KT15

Offers Over £328,300

 2  2  1



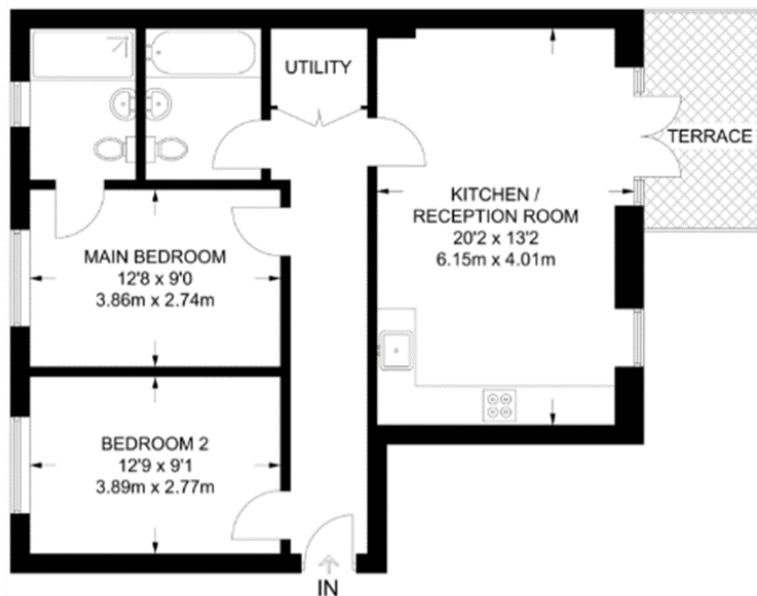
CHAIN FREE modern two bedroom apartment offering a private balcony, allocated parking and a lovely new finish.

As a new build apartment it boasts an incredibly modern kitchen with integrated appliances and hard wood floors. Natural light floods the lounge through full-length windows, creating a large bright living space. The private balcony is perfect for relaxation and entertaining with a peaceful view.

The apartment includes two bedrooms, with the main boasting an en-suite shower room, while a contemporary family bathroom serves both residents and guests. Nestled in a great location, this charming home offers easy access to excellent road links and is in easy reach of a variety of dining spots, cinema & entertainment, local amenities, and Addlestone train station.

- CHAIN FREE
- Two bedrooms, Two bathrooms
- Peaceful views
- Allocated parking
- Easy access to M25, M3, M4
- New build development
- Private balcony
- Lift access
- Close to Addlestone station
- High energy efficiency rating

Earhart Apartments, Hawker Drive, Addlestone, KT15 2GW



Approximate Floor Area = 726 SQ FT/67.5 SQ M