



**Pacey
Wingent
Dickson.**

INDEPENDENT PROPERTY AGENTS

*Helping the perfect property find you...
...time is precious. Let's not waste it!*

Griffin Way, Bookham, KT23

£1,275PCM (Deposit: £1,471)

🛏 1 🚿 1 🛋 1

- Available Now
- Brand New Kitchen
- EPC Rating C
- Bright and Spacious
- Easy access to Bookham Train Station
- Large one bedroom apartment
- Top floor (1st)
- Moments from Bookham High Street
- Gas Central Heating
- Communal Gardens



Tax Band: C Furnished: Unfurnished

A spacious top-floor one-bedroom apartment just steps from Bookham High Street, recently refurbished with a brand-new kitchen, fresh décor, and new carpets.

The property features a large double bedroom, modern bathroom, storage cupboard, and a bright semi open-plan living area that flows into the sleek kitchen, perfect for relaxing or entertaining.

Ideally located within walking distance of shops, cafes, Bookham Station (direct to London), and surrounded by National Trust countryside. Excellent road links via the M25 and close to top-rated schools, including Howard of Effingham. Nearby Cobham and Guildford offer additional amenities.



Griffin Way, Bookham, KT23 4JL
Approximate Gross Internal Area = 51 sq m / 549 sq ft

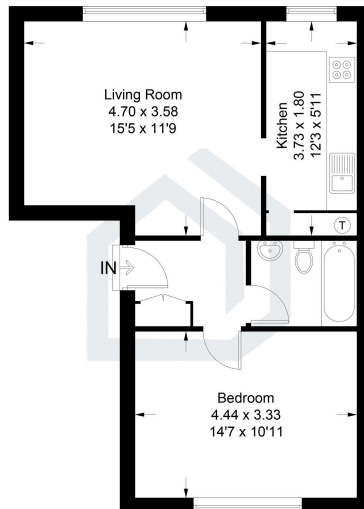


Illustration for identification purposes only, measurements are approximate, not to scale. Fourtains.co.uk (01208726)

