



Stoke Fields, Guildford, GU1

£2,000PCM (Deposit: £2,307)

🛏 2 🚿 2 🛋 1

- Two bedroom apartment
- Two bathrooms
- Furnished
- Open plan living
- Juliet balcony
- Fitted wardrobes
- EPC Rating B
- Close to Guildford and London Road train stations
- Easy access to A3,A31,M25
- Moments away from the historic cobbled high street



Tax Band: C Furnished: Not Specified

A beautifully appointed and contemporary two-bedroom apartment, presented in excellent condition and located in a quiet, tucked-away spot in the heart of Guildford town centre. Situated within a conservation area, it's just moments from the historic High Street, shops, restaurants, and both mainline and London Road railway stations.

Thoughtfully designed with a well-planned layout and high-spec neutral décor, the apartment features two generous double bedrooms with fitted wardrobes, including a principal bedroom with en-suite. The spacious L-shaped living area is open plan to a large modern kitchen, offering ample space for both dining and relaxing. Large windows and a juliet balcony provide an attractive outlook over the communal gardens, filling the space with natural light. Additional benefits include gas central heating, a secure video entry system, and a peaceful yet central setting ideal for town living.



Stoke Fields, Guildford, GU1

Approximate Gross Internal Area = 63.4 sq m / 682 sq ft

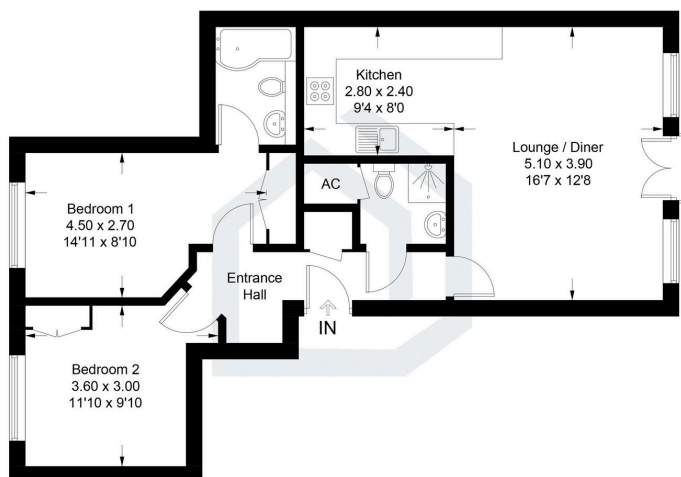


Illustration for identification purposes only, measurements are approximate, not to scale. Fourtaps.co © (1D1208956)

