



**Pacey
Wingent
Dickson.**

INDEPENDENT PROPERTY AGENTS

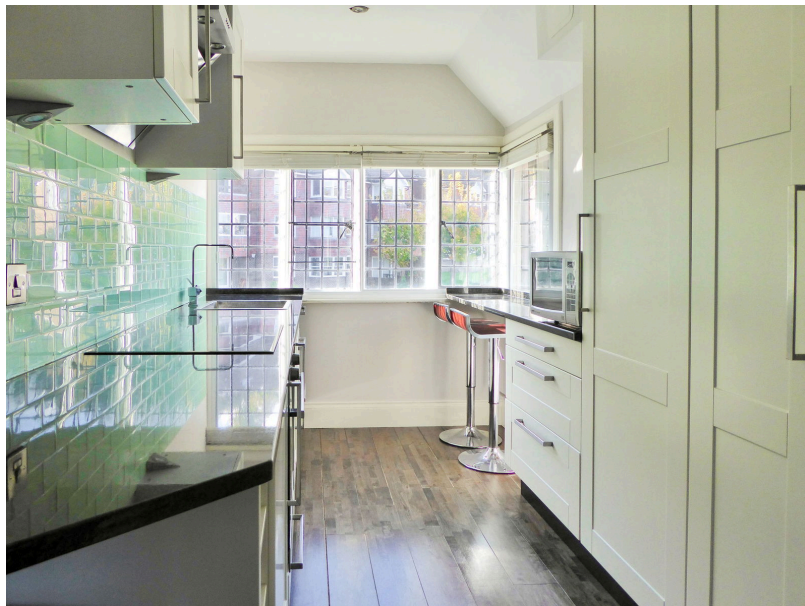
*Helping the perfect property find you...
...time is precious. Let's not waste it!*

Portsmouth Road, Guildford, GU2

£2,200PCM (Deposit: £2,538)

🛏 2 🚗 1 🛋 1

- Two bedroom top floor flat
- Furnished
- Off-street parking
- Large reception room with dining area
- Easy access to A3/A31/M3/M25
- Smart bathroom with underfloor heating
- Walking distance to Guildford mainline train station
- Superb views overlooking Guildford
- Moments from Guildford's cobbled high street and the River Wey
- Modern kitchen with integrated appliances and breakfast bar



Tax Band: C Furnished: Furnished

Stylish Top-Floor Apartment with Views Over Guildford

Set in a period building with far-reaching views, this beautifully furnished two-bedroom top-floor apartment offers modern living in a prime central Guildford location.

The bright open-plan living space features a sleek kitchen with integrated appliances, a breakfast bar, and large windows. There's also a utility room and a smart bathroom with underfloor heating. Both bedrooms are well-sized, and off-street parking is included.

Just a short walk from the cobbled High Street, River Wey, and Guildford mainline station, with easy access to the A3, A31, M3, and M25, this apartment is perfect for professionals seeking style, comfort, and convenience.

