



**Pacey
Wingent
Dickson.**

INDEPENDENT PROPERTY AGENTS

*Helping the perfect property find you...
...time is precious. Let's not waste it!*

204a London Road,
£1,575PCM (Deposit: £1,817)

🛏 2 🚿 1 🛋 1

- Top floor apartment
- Two double bedrooms
- Modern kitchen
- On road parking
- Catchment area for George Abbot School
- Easy access to A3/A31/M25
- Moments from Guildford town centre
- Family bathroom with bathtub and shower over



Tax Band: C Furnished: Not Specified

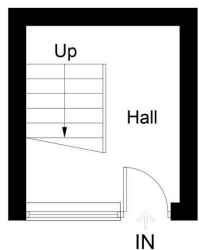
This well-presented top floor two double bedroom apartment is ideally situated just moments from Guildford town centre and within walking distance of local shops. The property benefits from excellent transport links, offering easy access to the A3, A31 and M25.

The property comprises a welcoming hallway leading to a modern fitted kitchen/living area with appliances, two spacious double bedrooms and a family bathroom with shower over bath. Further features include on-road parking, and the property falls within the sought-after catchment area for George Abbot School.

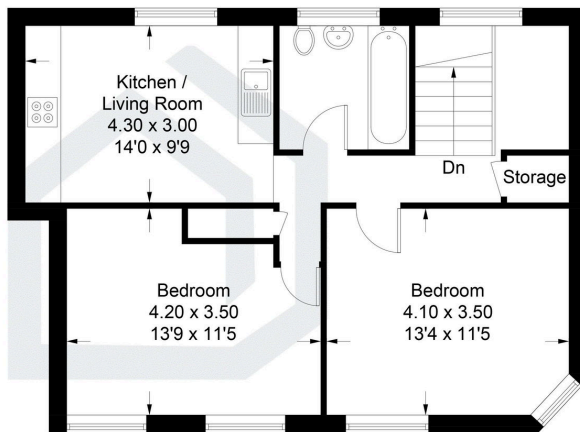


London Road, Guildford, GU4

Approximate Gross Internal Area = 62.5 sq m / 673 sq ft



Ground Floor



First Floor

Illustration for identification purposes only, measurements are approximate, not to scale. Fourlabe.co © (ID1237066)

