



 Pacey
Wingent
Dickson.

INDEPENDENT PROPERTY AGENTS

*Helping the perfect property find you...
...time is precious. Let's not waste it!*

Crescent Road, Kingston Upon Thames, KT2

Guide Price £550,000

🛏️ 2 🍽️ 1 🛋️ 1

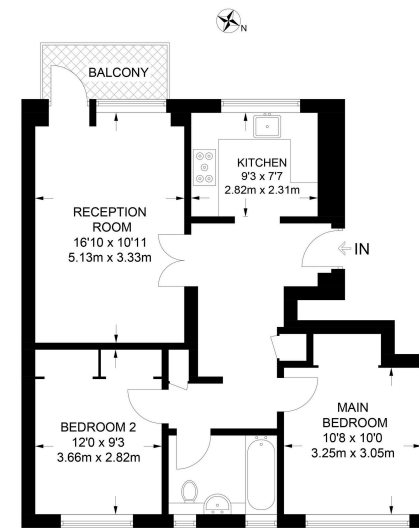
- Second floor apartment with secure entry system
- Two double bedrooms
- Balcony
- Short walk from Richmond Park
- Modern kitchen and bathroom
- Superb school catchment area
- Large reception room with space to dine
- EPC Rating C
- Gas central heating
- Easy access to Norbiton train station, Kingston Hospital and local amenities



A well-presented and spacious two double bedroom second-floor apartment with balcony and access to communal gardens. Located on a popular residential street, the property features a generous reception room with dining space, separate modern kitchen, two double bedrooms, and a contemporary bathroom. Additional benefits include double glazing and an external store/shed. Resident permit parking is available, with the option to try to rent a space or garage separately.

Hillside Court is ideally located on Crescent Road, between Kingston and Kingston Hill. Norbiton Station (Zone 5) is just 0.6 miles away, offering easy access to central London. The area is served by Outstanding-rated schools and several top independent schools. Richmond Park's Kingston Gate is only 0.3 miles away, offering 2,500 acres of beautiful parkland. Kingston town centre and riverside are nearby, with a wide choice of shops, restaurants, and leisure options.





SECOND FLOOR
 APPROXIMATE GROSS INTERNAL AREA
 690 SQ FT / 64.1 SQ M

This plan has been drawn for illustrative and identification purposes only.

