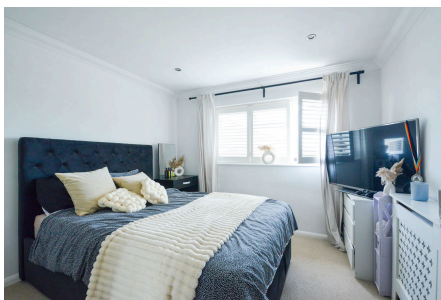


Kingston Road, Leatherhead

Guide Price £225,000

🛏 1 🍳 1 🛋 1



A very light and well presented one bedroom first floor flat with a private garden in Leatherhead.

This well-maintained first-floor flat is ideal for first-time buyers or investors. The entrance hall, spacious open-plan living room, fitted kitchen, double bedroom, and bathroom are all in great condition. The private garden is ideal for BBQ's. There is also a loft which can be accessed for storage.

Local shops are nearby, and road users benefit from easy access to the M25 at Junction 9 and the A3.

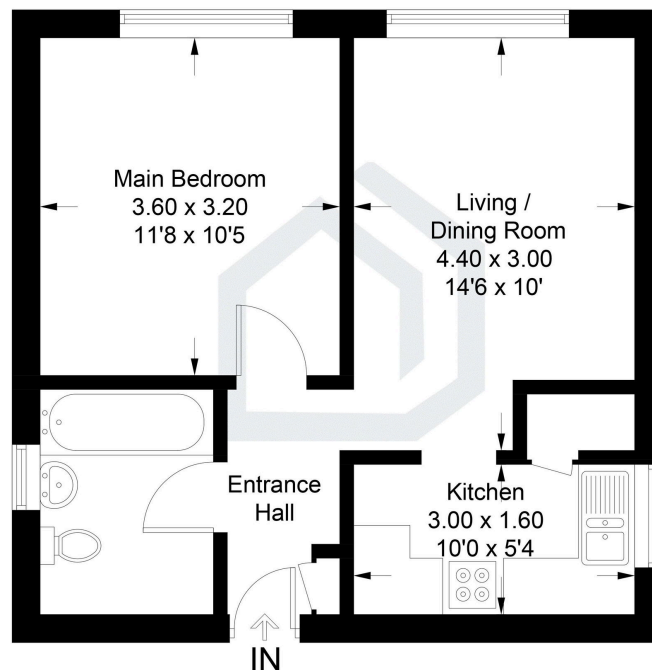
Leatherhead is a charming market town in Surrey, offering a mix of shops, a regular market, a theater, and leisure centers. The train station provides regular services to London Waterloo in approximately 40 minutes. Schools for all ages are also well catered for in the area.

Key Features

- Top Floor
- Private rear garden
- Residents parking available
- EPC rating D
- Short distance to local amenities including Tesco Superstore
- One bedroom flat
- Light and spacious
- Secure entry phone system
- Excellent transport links via Leatherhead train station, local bus routes and M25
- Large loft space and external storage accessed from communal area

Kingston Road, Leatherhead, KT22

Approximate Gross Internal Area = 39 sq m / 420 sq ft



First Floor

Illustration for identification purposes only, measurements are approximate, not to scale. Fourlabs.co © (ID1198117)