



Sutton Court Road, Sutton, SM1

Offers Over £300,000

 1  1  1



Located on the fourth floor of a modern and well-maintained development, this stylish one-bedroom apartment offers bright, contemporary living in the heart of Sutton.

The open-plan living and kitchen area is filled with natural light and features a modern fitted kitchen with integrated appliances. The spacious double bedroom includes a built-in wardrobe, while the sleek four-piece bathroom is finished to a high standard with both a bath and separate shower.

Additional features include secure gated underground parking, two lifts, electric-only utilities, a large storage cupboard, and a pressurised hot water system.

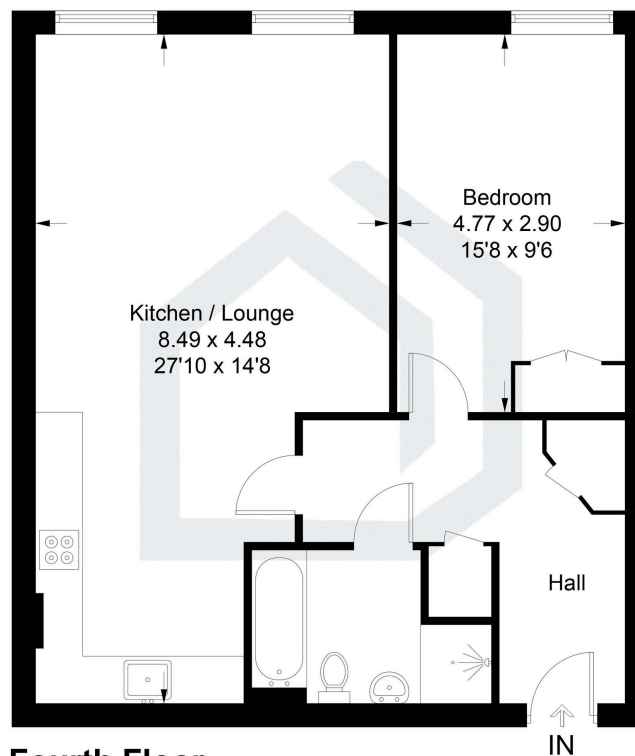
The apartment is within walking distance of Sutton Station (direct trains to London Victoria in approx. 27 minutes) and Sutton Town Centre's shops, cafés, and transport links. It's also within catchment for highly regarded local schools and close to parks and other amenities.

Key Features

- Fourth floor apartment
- Large bedroom with built in storage
- Secure entry system
- Underground gated parking
- Moments from Sutton Town Centre
- Modern open plan living
- Bright and spacious
- Stair and lift access to all floors
- Luxury four-piece bathroom suite
- Short walk to Sutton Station

Sutton Court Road, Sutton, SM1

Approximate Gross Internal Area = 64.0 sq m / 689 sq ft



Fourth Floor

Illustration for identification purposes only, measurements are approximate, not to scale. Fourlabs.co © (ID1203529)