



London Road, Guildford, GU4
Guildford

£1,650 pcm

Deposit: £1,903

Date First Available: 20/01/2026

A beautifully renovated two-bedroom first-floor apartment, ideally positioned on Burpham's popular parade of shops.

Recently refurbished throughout, this bright and well-presented apartment features modern finishes, a fresh neutral décor and well-proportioned accommodation, making it ideal for professionals, students or sharers alike. The property benefits from two good-sized bedrooms, a stylish bathroom, and an open-plan kitchen/living space with a breakfast bar.

Set right on the parade, you're moments from a wide range of local amenities including shops, restaurants and a bike shop. The A3 is just moments away, providing easy access to London and the surrounding areas, and Guildford town centre is within easy reach.

Burpham Park, also known as Sutherland memorial park, is moments away, perfect for outdoor space and leisure.

Student and sharer friendly.

Some rooms have been virtually staged to show potential use of space. Furniture and decor are for illustrative purposes only.



Deposit: £1,903

Date First Available: 20/01/2026

A beautifully renovated two-bedroom first-floor apartment, ideally positioned on Burpham's popular parade of shops.

Recently refurbished throughout, this bright and well-presented apartment features modern finishes, a fresh neutral décor and well-proportioned accommodation, making it ideal for professionals, students or sharers alike. The property benefits from two good-sized bedrooms, a stylish bathroom, and an open-plan kitchen/living space with a breakfast bar.

Set right on the parade, you're moments from a wide range of local amenities including shops, restaurants and a bike shop. The A3 is just moments away, providing easy access to London and the surrounding areas, and Guildford town centre is within easy reach.

Burpham Park, also known as Sutherland memorial park, is moments away, perfect for outdoor space and leisure.

Student and sharer friendly.

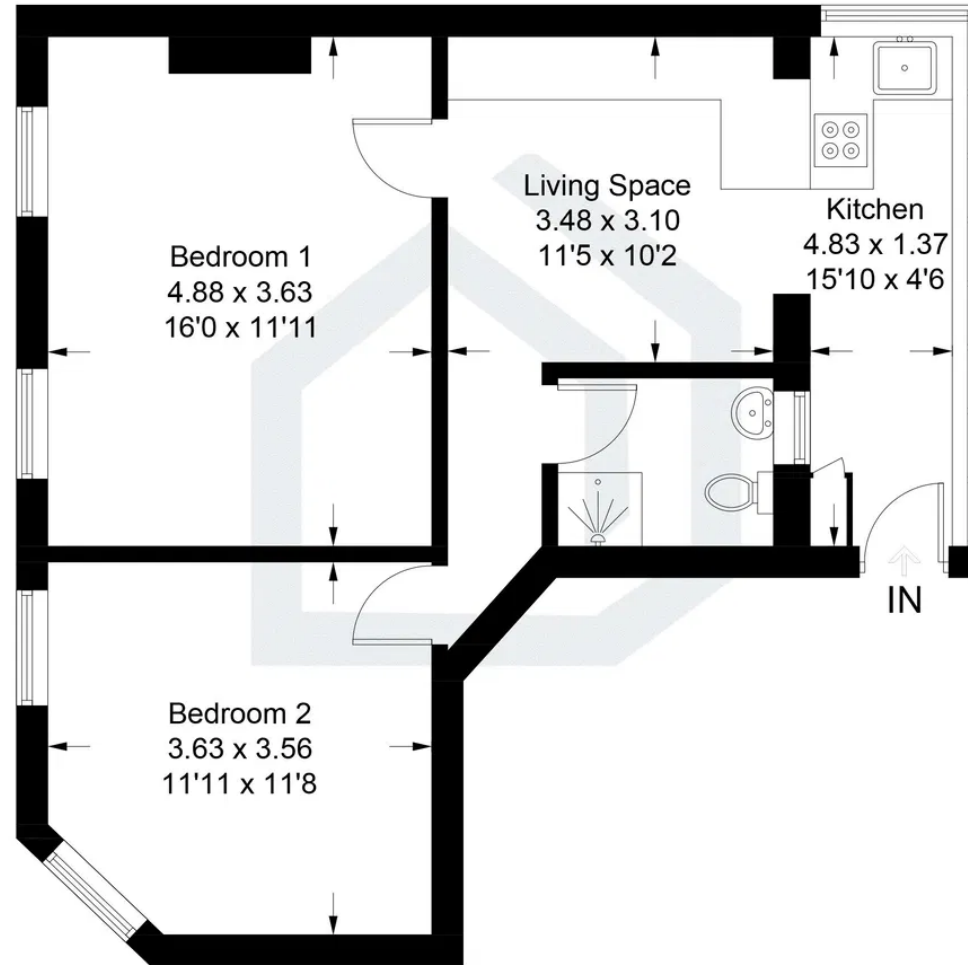
Some rooms have been virtually staged to show potential use of space. Furniture and decor are for illustrative purposes only.





London Road, Guildford, GU4

Approximate Gross Internal Area = 55.4 sq m / 596 sq ft



First Floor

Illustration for identification purposes only, measurements are approximate, not to scale. Fourlabs.co © (ID1264916)

Pacey Wingent Dickson Property Partnership Limited

197 Lower Road Great Bookham Leatherhead KT23 4DG

01372 456 804

info@pwdproperty.co.uk
<https://pwdproperty.co.uk/>