



Station View, Guildford, GU1
Guildford

£385,000

Bedrooms: 2

Bathrooms: 2

Receptions: 1

*****CHAIN FREE***** Exceptional Two-Bedroom Penthouse with Large Roof Terrace – Moments from Guildford Station and High Street

Built in 2017, this outstanding two-bedroom penthouse apartment offers contemporary living in a prime central Guildford location. Situated on a quiet road just 0.3 miles from Guildford's mainline station and a short walk from the historic High Street, the property combines style, comfort, and convenience.

The bright and spacious accommodation features engineered wood flooring throughout and includes a stunning open-plan kitchen/living area, complete with high-quality AEG appliances and Arena stone worktops. Lightwaver smart lighting and sockets, along with a Tado smart thermostat, bring modern efficiency and control to the space.

A highlight of the property is the private roof terrace with far-reaching views over Guildford town – perfect for relaxing, dining outside or entertaining. The master bedroom benefits from fitted wardrobes and a luxurious en-suite shower room, while a second double bedroom and a sleek family bathroom complete the layout.

Additional features include secure gated underground parking, a video entry phone system, and an EPC rating of B.

This impressive penthouse offers exceptional town-centre living just moments from transport links, shops, restaurants, and all that Guildford has to offer.







Bedrooms: 2

Bathrooms: 2

Receptions: 1

*****CHAIN FREE***** Exceptional Two-Bedroom Penthouse with Large Roof Terrace – Moments from Guildford Station and High Street

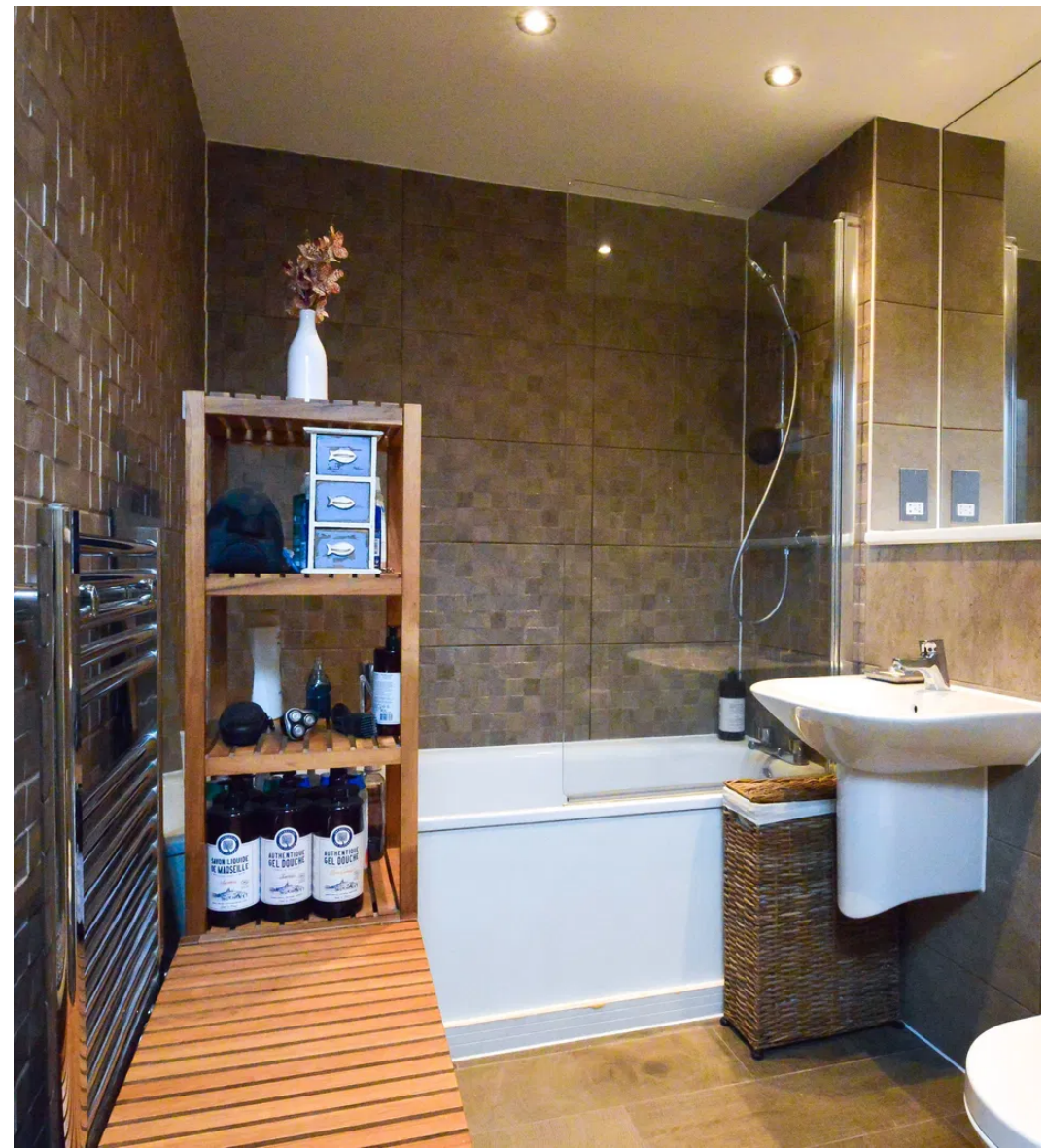
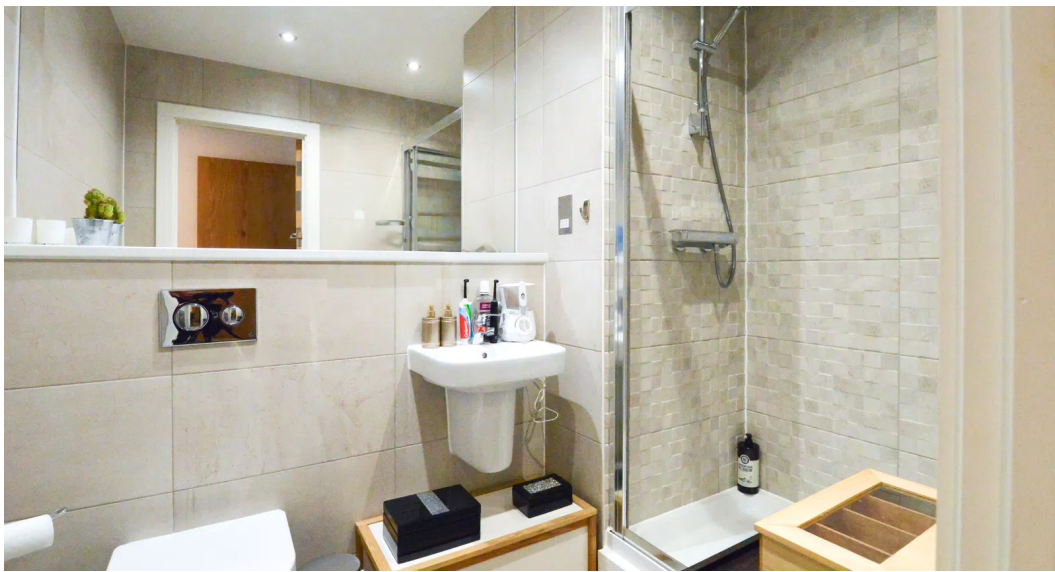
Built in 2017, this outstanding two-bedroom penthouse apartment offers contemporary living in a prime central Guildford location. Situated on a quiet road just 0.3 miles from Guildford's mainline station and a short walk from the historic High Street, the property combines style, comfort, and convenience.

The bright and spacious accommodation features engineered wood flooring throughout and includes a stunning open-plan kitchen/living area, complete with high-quality AEG appliances and Arena stone worktops. Lightwaver smart lighting and sockets, along with a Tado smart thermostat, bring modern efficiency and control to the space.

A highlight of the property is the private roof terrace with far-reaching views over Guildford town – perfect for relaxing, dining outside or entertaining. The master bedroom benefits from fitted wardrobes and a luxurious en-suite shower room, while a second double bedroom and a sleek family bathroom complete the layout.

Additional features include secure gated underground parking, a video entry phone system, and an EPC rating of B.

This impressive penthouse offers exceptional town-centre living just moments from transport links, shops, restaurants, and all that Guildford has to offer.



Pacey Wingent Dickson Property Partnership Limited

197 Lower Road Great Bookham Leatherhead KT23 4DG

01372 456 804

info@pwdproperty.co.uk

<https://pwdproperty.co.uk/>