



**Pacey
Wingent
Dickson.**

INDEPENDENT PROPERTY AGENTS

*Helping the perfect property find you...
...time is precious. Let's not waste it!*

Condor Road, Laleham, TW18

Offers Over £695,000

🛏 2 🚿 1 🛋 2

- Detached
- Private road
- Large dual aspect living room with bi-fold doors to garden
- Separate study
- Short walk to River Thames
- South facing garden
- EPC Rating C
- Close to Shepperton train station
- Easy access to M3, M25, Heathrow Airport
- Historic village location



Set on a private road just yards from the River Thames, 'Leecroft' is a delightful detached cottage blending village charm with modern convenience. The home features a spacious open-plan living/dining room with bi-fold doors to a south-facing courtyard garden, a bespoke kitchen/breakfast room, and a front-aspect study. Upstairs are two double bedrooms and a family bathroom, while a private driveway provides off-street parking. Lovingly maintained by the same owner for over 20 years, the property also benefits from an EPC rating of C.

Laleham is a picturesque riverside village with pubs, shops, and the historic All Saints Church. Nearby Staines-upon-Thames offers excellent amenities, schools, and fast rail links to London Waterloo in around 30 minutes. With the M25, M3, A316 and Heathrow close by, this location offers both tranquility and convenience.



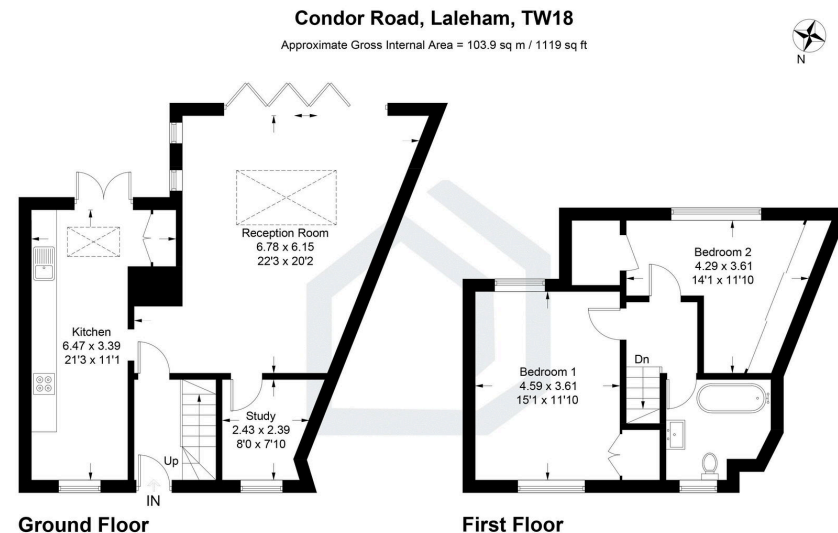


Illustration for identification purposes only. measurements are approximate, not to scale. Fourlabs.co © (ID1246012)

