



Elmer Cottages, Fetcham

Leatherhead

Offers Over
£775,000

Bedrooms: 4

Bathrooms: 3

Receptions: 3

This beautifully presented four-bedroom, three-bathroom detached family home is set in the desirable location of Fetcham.

The ground floor is thoughtfully arranged and features a stunning open-plan eat-in dining and reception room, complete with a breakfast bar and flooded with natural light. Bifolding doors open directly onto the rear garden.

The modern kitchen is well equipped and complemented by a separate utility room for added practicality. Further ground-floor accommodation includes a contemporary Jack and Jill shower room, which opens into both the study and the open-plan reception space, allowing the study to be used as a potential annexe or fifth bedroom. There is also an additional reception room boasting a charming wood-burning fireplace, ideal for cozy evenings.

Upstairs, the first floor offers four well-proportioned bedrooms, with one of the bedrooms benefiting from its own en-suite, while the remaining bedrooms are served by a stylish family bathroom.

Outside, the property enjoys a private driveway providing off-street parking, a garage, and a large rear garden.

The home is conveniently located close to Leatherhead Leisure Centre, the town centre, and the train station. There are also several well-regarded schools nearby, including Fetcham Village Infant School, St John's School, and The Howard of Effingham.







Bedrooms: 4

Bathrooms: 3

Receptions: 3

This beautifully presented four-bedroom, three-bathroom detached family home is set in the desirable location of Fetcham.

The ground floor is thoughtfully arranged and features a stunning open-plan eat-in dining and reception room, complete with a breakfast bar and flooded with natural light. Bifolding doors open directly onto the rear garden.

The modern kitchen is well equipped and complemented by a separate utility room for added practicality. Further ground-floor accommodation includes a contemporary Jack and Jill shower room, which opens into both the study and the open-plan reception space, allowing the study to be used as a potential annexe or fifth bedroom. There is also an additional reception room boasting a charming wood-burning fireplace, ideal for cozy evenings.

Upstairs, the first floor offers four well-proportioned bedrooms, with one of the bedrooms benefiting from its own en-suite, while the remaining bedrooms are served by a stylish family bathroom.

Outside, the property enjoys a private driveway providing off-street parking, a garage, and a large rear garden.

The home is conveniently located close to Leatherhead Leisure Centre, the town centre, and the train station. There are also several well-regarded schools nearby, including Fetcham Village Infant School, St John's School, and The Howard of Effingham.



Pacey Wingent Dickson Property Partnership Limited

197 Lower Road Great Bookham Leatherhead KT23 4DG

01372 456 804

info@pwdproperty.co.uk

<https://pwdproperty.co.uk/>

Elmer Cottages

Approximate Gross Internal Area = 155.8 sq m / 1677 sq ft

Garage = 16.1 sq m / 173 sq ft

Total = 171.9 sq m / 1850 sq ft

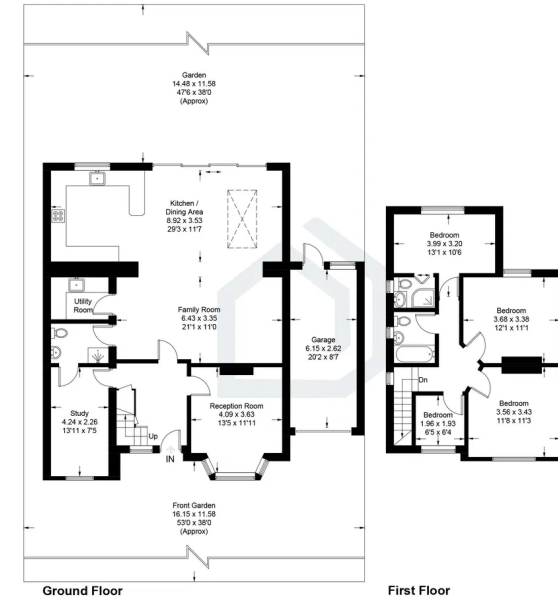


Illustration for identification purposes only, measurements are approximate, not to scale. Fourlabs.co © (ID1264842)