





## Leith House, Station Road

£1,150PCM (Deposit: £1,326)

🛏 1 🍳 1 🛋 1



- Top floor
- Bright and spacious
- Gas central heating
- Communal garden
- Great conditon
- Allocated off-street parking
- Moments from the train station and town centre
- Loft access

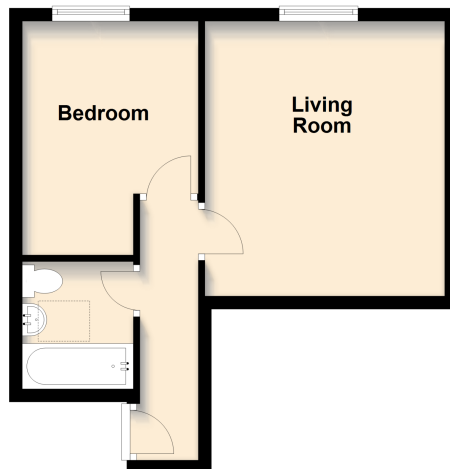


Tax Band: B Furnished: Flexible

A bright and well presented top floor one bedroom apartment located in the centre of Leatherhead. The apartment comprises an entrance hall, open plan kitchen/living room, good sized double bedroom, spacious bathroom and access to a large loft. At the rear of the property there is a communal garden and allocated off-street parking. The property is just moments from Leatherhead town centre, the mainline train station, and offers easy access to the A24 and M25 by car.



**Second Floor Flat**  
Approx. 349.0 sq. feet



Total area: approx. 349.0 sq. feet

Please note that this floorplan is not to scale and is for illustrative purposes only.  
Plan produced using PlanUp.

### Energy Efficiency Rating

	Current	Potential
Very energy efficient - lower running costs		
(92 plus) <b>A</b>		
(81-91) <b>B</b>		
(69-80) <b>C</b>		78
(55-68) <b>D</b>	67	
(39-54) <b>E</b>		
(21-38) <b>F</b>		
(1-20) <b>G</b>		
Not energy efficient - higher running costs		
<b>England &amp; Wales</b>	EU Directive 2002/91/EC	