

# Cranleigh Lodge



**Regal**  
LEISURE HOMES

LUXURY LIVING, *Boutique feel*

Pushing the boundaries in both structural styling and interior design, the new, flagship, Cranleigh Lodge by Regal is an opulent and luxurious holiday home with a boutique hotel feel.



## FEATURES

### Exterior

- Large, front aspect, panoramic windows and French doors with black bars
- Rigid Claystone vinyl exterior cladding
- Feature Anthracite stone effect cladding to front and side aspect
- Anthracite uPVC double glazing

### Construction

- Fully insulated floor, walls and roof
- Twin axle fully galvanised steel chassis with detachable tow bar
- Vaulted ceilings throughout
- Minimum ceiling height of 7ft, maximum ceiling height of 9ft
- Gas combi central heating system
- Stepped floor with LED lighting

### Lounge

- Modern freestanding sofa, two armchairs and a large footstool
- Cylindrical electric log burner
- Contemporary feature radiators
- Ceiling mounted Bluetooth speakers
- Freestanding TV unit
- Pendant lighting

- Black nickel light switches and sockets
- Four scatter cushions
- Feature wall board
- USB socket

### Kitchen / Dining Area

- Double Velux windows
- Larder cupboard
- Domestic sized kitchen units with soft close doors and drawers
- Integrated fridge freezer, washing machine, microwave, oven and slimline dishwasher
- Designer glass extractor hood
- Stylish 25mm worktop and matching full-height upstand
- Black nickel light switches and sockets
- Freestanding dining table with four designer chairs

### Master Bedroom

- Super king-size divan and luxury mattress
- Large built-in wardrobe with mirrored sliding doors
- Window seat and cushions with built-in storage
- Luxurious scatter cushions and matching bed runners

- Feature pendant bedside lights
- Recessed dressing table Feature wallboard
- TV point and USB socket
- Black nickel light switches and sockets

### Twin Bedroom

- 3ft beds with wall mounted headboards
- TV point and USB socket
- Fitted wardrobe, shelves and cupboards

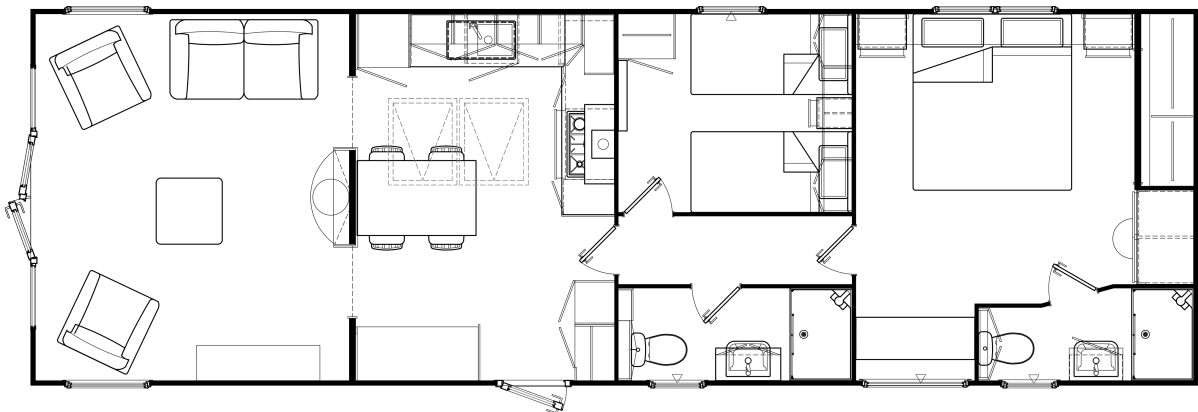
### Bathroom / En-suite

- Fully enclosed shower with sliding glass door

### Popular Optional Features

- CanExel cladding

### TWO BEDROOM 43' x 14'



Ferndown House, Unit 90, Old Barn Farm Road, Woolsbridge Industrial Park, Three Legged Cross, Wimborne, Dorset BH21 6SU

T 0333 577 5274 | E [info@regalh.co.uk](mailto:info@regalh.co.uk) | W [regalh.co.uk](http://regalh.co.uk)

Regal Leisure Homes is a division of Omar Park Homes Limited. Registered in England No. 06860361. Registered Office: London Road, Brandon, Suffolk IP27 0NE



Scan the code to view our full range of holiday homes