

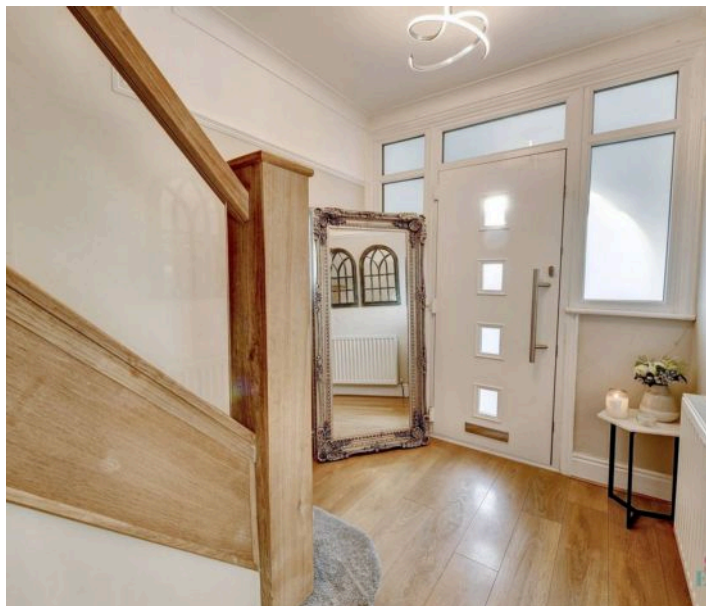


Grove Park Avenue, Rhyl – LL18 3RG

£230,000 Freehold

Located in the sought-after Grove Park, Rhyl, this three-bedroom detached home offers a fantastic blend of modern upgrades and future potential. Recently benefiting from a new roof and a central heating system, the property ensures both efficiency and comfort.

SIMPLY ESTATES



Entrance Hall

A bright, welcoming hallway with wood flooring, glass-panelled stairs, and a modern front door. Clean lines and natural light create a fresh, open feel.

Lounge

10' 11" x 15' 0" (3.34m x 4.57m)

A bright and welcoming space with a large bay window that fills the room with natural light. The stylish feature wall and soft carpeting create a cosy yet modern feel.

Dining Room

9' 11" x 12' 8" (3.03m x 3.87m)

A spacious area with great potential, now enhanced by newly fitted UPVC doors leading to the back garden, creating a seamless flow between indoor and outdoor living. While it requires redecoration, this presents a fantastic opportunity for the new owner to add their own personal touch and transform the space to suit their style.



Kitchen

19' 4" x 8' 2" (5.90m x 2.49m)

A sleek, contemporary kitchen with high-gloss units, contrasting worktops, and eye-catching tiled splashbacks. Featuring a built-in oven, integrated hob, and a handy breakfast bar, this space is both practical and stylish.



Bedroom One

10'2" x 15' 7" (4.57 x 3.34)

A Spacious front facing bedroom featuring a large bay window, allowing plenty of natural light to fill the space. Currently used as a children's bedroom, it has soft grey plush carpets, offering a cosy and neutral base. A versatile room that can easily be adapted to suit different needs.

Bedroom Two

10' 1" x 12' 4" (3.07m x 3.75m)

A well-proportioned double bedroom with a large window, allowing for plenty of natural light. Finished with soft carpeting and wallpapered feature wall, this room offers a cosy yet modern feel.

Bedroom Three

12' 4" x 10' 1" (3.75m x 3.07m)

A cosy single bedroom that could be used as a home office, nursery, or dressing room. The bay window adds character and brightness.

Bathroom

8' 6" x 7' 7" (2.58m x 2.31m)

A modern and stylish bathroom featuring a large walk-in shower, sleek vanity unit, and contemporary finishes.

Garage

15' 6" x 8' 5" (4.72m x 2.57m)

A detached garage offering excellent storage or potential for a workshop. With ample space for a vehicle or additional household items, it provides great flexibility.



Approx Gross Internal Area
108 sq m / 1163 sq ft



This floorplan is only for illustrative purposes and is not to scale. Measurements of rooms, doors, windows, and any items are approximate and no responsibility is taken for any error, omission or mis-statement. Icons of items such as bathroom suites are representations only and may not look like the real items. Made with Made Snappy 360.

Our Team



Making Your Property Journey Personal

Choose Simply Estates for all your buying and selling needs and experience the difference of a family run business that truly cares. With our personalised service and deep local knowledge, we offer insights that only come from being part of the community. Our customer-focused approach ensures that you're supported every step of the way because we understand that buying or selling a home is one of life's most significant milestones. Trust Simply Estates to guide you through the process with care, expertise, and a commitment to making your property journey as smooth and successful as possible.



↪ find out what your property is worth

SIMPLY ESTATES