



Trem Y Bont, Kinmel Bay – LL18 5BZ

£150,000 Freehold

Situated in a quiet cul-de-sac, this well presented two-bedroom home offers bright living spaces, a practical layout, and a low maintenance garden.

SIMPLY ESTATES



Hallway

Welcoming hallway with stairs to the first floor and access to the lounge.

Lounge

10' 11" x 12' 8" (3.33m x 3.86m)

A bright, airy living space with large front-facing window and a neutral palette. Perfect for everyday relaxation or hosting guests.

Kitchen

14' 0" x 7' 3" (4.27m x 2.21m)

A practical U-shaped kitchen with warm wood cabinetry, tiled splashbacks, and stylish herringbone flooring. Bright and functional, with ample worktop space and room for a small dining area.

Conservatory

7' 3" x 10' 6" (2.21m x 3.20m)

Sun-filled and spacious with full-height windows, rustic brickwork, and terracotta floor tiles. A lovely spot to enjoy the garden year-round.



Main Bedroom

10' 11" x 8' 3" (3.33m x 2.51m)

A comfortable double bedroom with a front-facing window, built-in storage, and soft carpet underfoot. Peaceful and easy to personalise.

Bedroom 2

8' 0" x 11' 10" (2.44m x 3.61m)

A well-sized room with a bright window and neutral décor, ideal as a guest bedroom, nursery, or home office.

Bathroom

5' 9" x 5' 2" (1.75m x 1.57m) grhthth

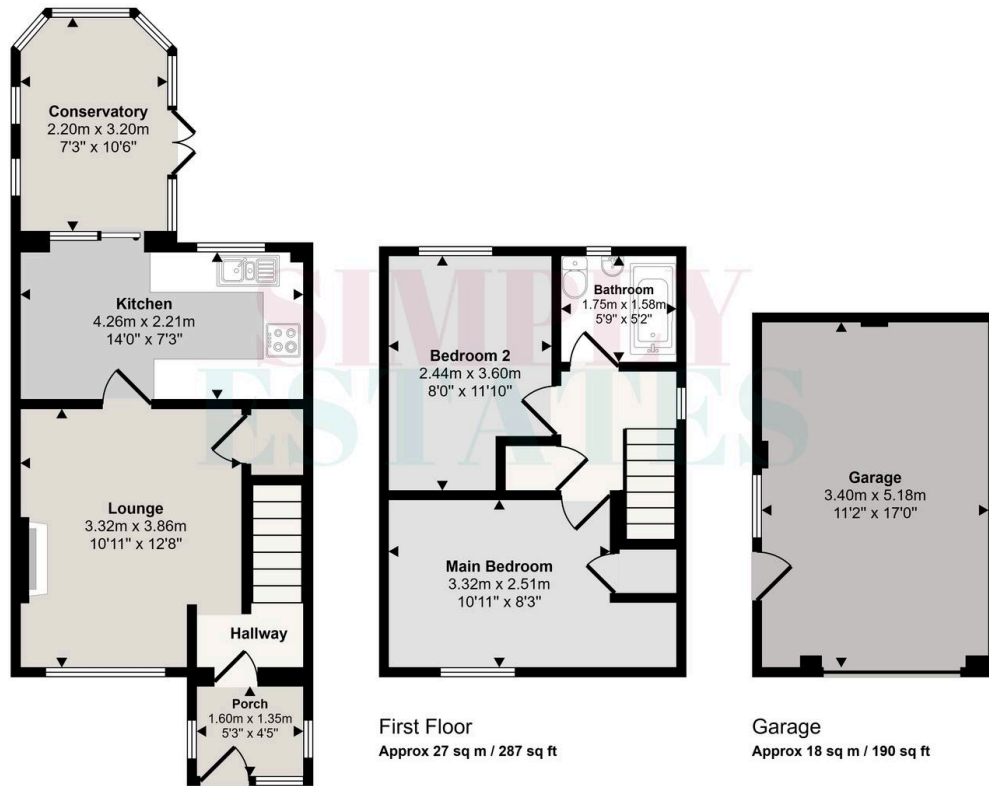
A clean and functional space with a bathtub and overhead power shower, WC, and basin. Simple and easy to maintain.

Rear Garden

A neat, low maintenance garden with a paved patio, slate chippings, and access to a detached garage. great for relaxing or outdoor dinning.



Approx Gross Internal Area
81 sq m / 868 sq ft



Ground Floor
Approx 36 sq m / 391 sq ft

This floorplan is only for illustrative purposes and is not to scale. Measurements of rooms, doors, windows, and any items are approximate and no responsibility is taken for any error, omission or mis-statement. Icons of items such as bathroom suites are representations only and may not look like the real items. Made with Made Snappy 360.

Our Team



Making Your Property Journey Personal

Choose Simply Estates for all your buying and selling needs and experience the difference of a family run business that truly cares. With our personalised service and deep local knowledge, we offer insights that only come from being part of the community. Our customer-focused approach ensures that you're supported every step of the way because we understand that buying or selling a home is one of life's most significant milestones. Trust Simply Estates to guide you through the process with care, expertise, and a commitment to making your property journey as smooth and successful as possible.



↪ find out what your property is worth

SIMPLY ESTATES