



East Parade, Rhyl – LL18 3AP

£215,000 Freehold

This semi-detached house offers stunning sea views from the front and is located directly opposite the beach, with convenient access to all local amenities.

The ground floor includes an entrance porch, a hallway that opens into a front-facing lounge with sea views, a dining room, a kitchen, a ground-floor utility/shower room, and a sunroom that leads to an enclosed courtyard. Upstairs, there is a landing, a family bathroom, and three bedrooms.

SIMPLY ESTATES



Lounge

14' 8" x 12' 10" (4.46m x 3.90m)

This bright and airy room is neutrally decorated and features two large windows that flood the room with natural light, creating a bright and welcoming atmosphere.

Dining Room

12' 8" x 10' 11" (3.85m x 3.32m)

This charming dining room offers a spacious and welcoming environment, perfect for family meals and entertaining guests. The room is filled with natural light thanks to the beautiful bay window.

Kitchen

14' 10" x 9' 11" (4.51m x 3.03m)

This spacious and well-appointed kitchen provides ample room for both cooking and dining, and opens directly into a bright and airy conservatory. While it would benefit from updating, the generous space offers plenty of potential for various design options.

Sun Room

14' 1" x 6' 2" (4.29m x 1.89m)

With tiled flooring, a metal-framed double-glazed sliding door that opens to the enclosed courtyard, and doors leading to both the garage and the ground-floor shower room.

Utility/Shower Room

7' 5" x 5' 8" (2.26m x 1.72m)

Currently used as a utility space, this room includes a shower cubicle, toilet, and pedestal wash hand basin. It also features plumbing for a washing machine and vinyl flooring.



Main Bedroom

15' 6" x 12' 0" (4.73m x 3.67m)

This impressive main bedroom boasts two double glazed windows, offering an abundance of natural light and spectacular views. The side window provides a glimpse of the sea, while the front-facing bay window offers breath-taking, far-reaching views over the Promenade and Rhyl beach, making this room a true sanctuary.

Bedroom Two

11' 3" x 10' 6" (3.42m x 3.21m)

This generously-sized second double bedroom has ample storage with built-in wardrobes. The room is further enhanced by a large double glazed bay window to the side, which adds both character and natural light.

Bedroom Three

8' 8" x 8' 3" (2.63m x 2.51m)

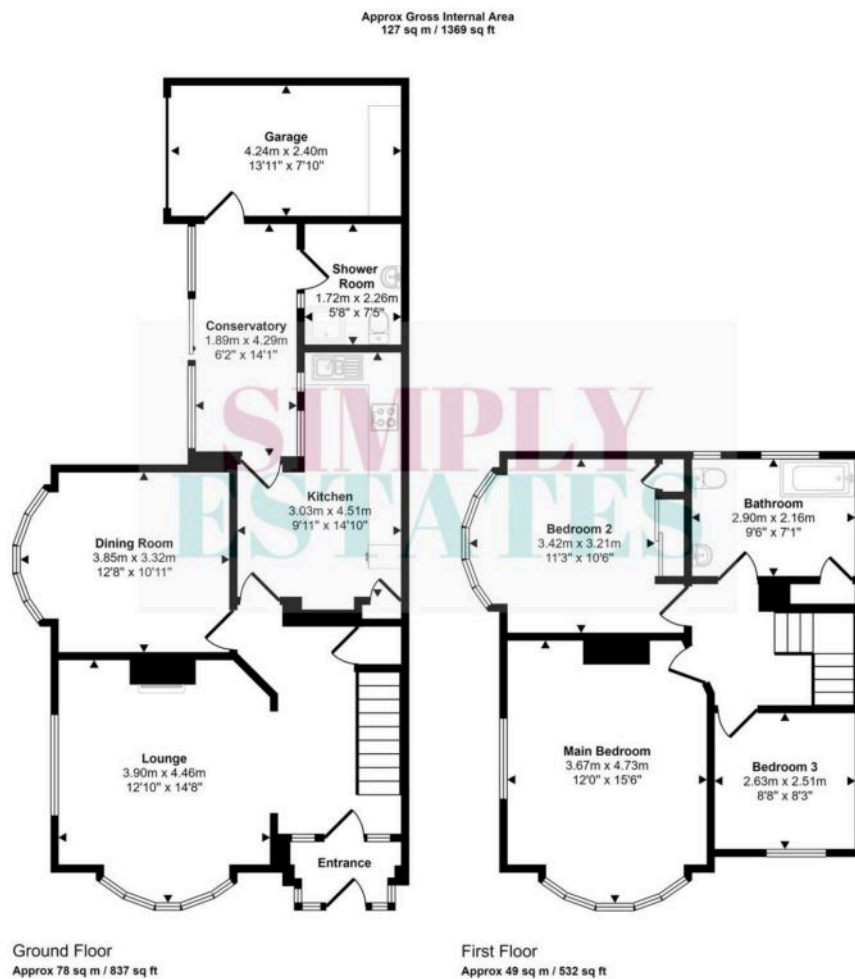
Currently utilised as an office, this third bedroom offers flexibility with ample space for bed and plenty of storage space. The double glazed front window not only ensures a bright and airy space but also offers stunning sea views.

Bathroom

9' 6" x 7' 1" (2.90m x 2.16m)

The room comfortably accommodates a modern vanity wash hand basin, a sleek toilet, and a bath with mixer taps, all complemented by elegant marble effect wall panels. Practicality is enhanced with a built-in storage cupboard housing the boiler. The space is finished with easy-to-maintain vinyl flooring, ambient spotlights, and natural light.





To the rear of the property sits a charming small garden between the sunroom and garage, offering a cozy, sunlit space ideal for relaxing with room for potted plants and outdoor dining.

Our Team



Making Your Property Journey Personal

Choose Simply Estates for all your buying and selling needs and experience the difference of a family run business that truly cares. With our personalised service and deep local knowledge, we offer insights that only come from being part of the community. Our customer-focused approach ensures that you're supported every step of the way because we understand that buying or selling a home is one of life's most significant milestones. Trust Simply Estates to guide you through the process with care, expertise, and a commitment to making your property journey as smooth and successful as possible.



↙ find out what your property is worth

SIMPLY ESTATES