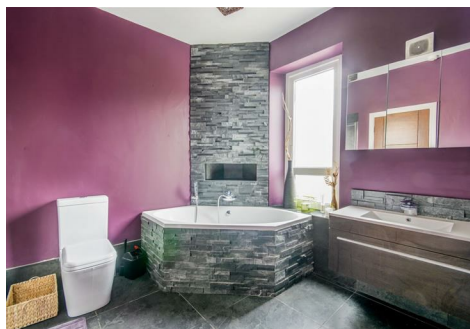


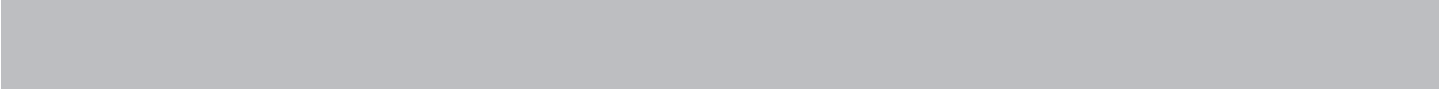
T. 0191 236 8347  
E. [info@bruntonresidential.com](mailto:info@bruntonresidential.com)  
A. 125 St George's Terrace, NE2  
W. 2DN  
[bruntonresidential.com](http://bruntonresidential.com)




## Rothbury Terrace, Heaton, NE6 5XH

£2,860 PCM

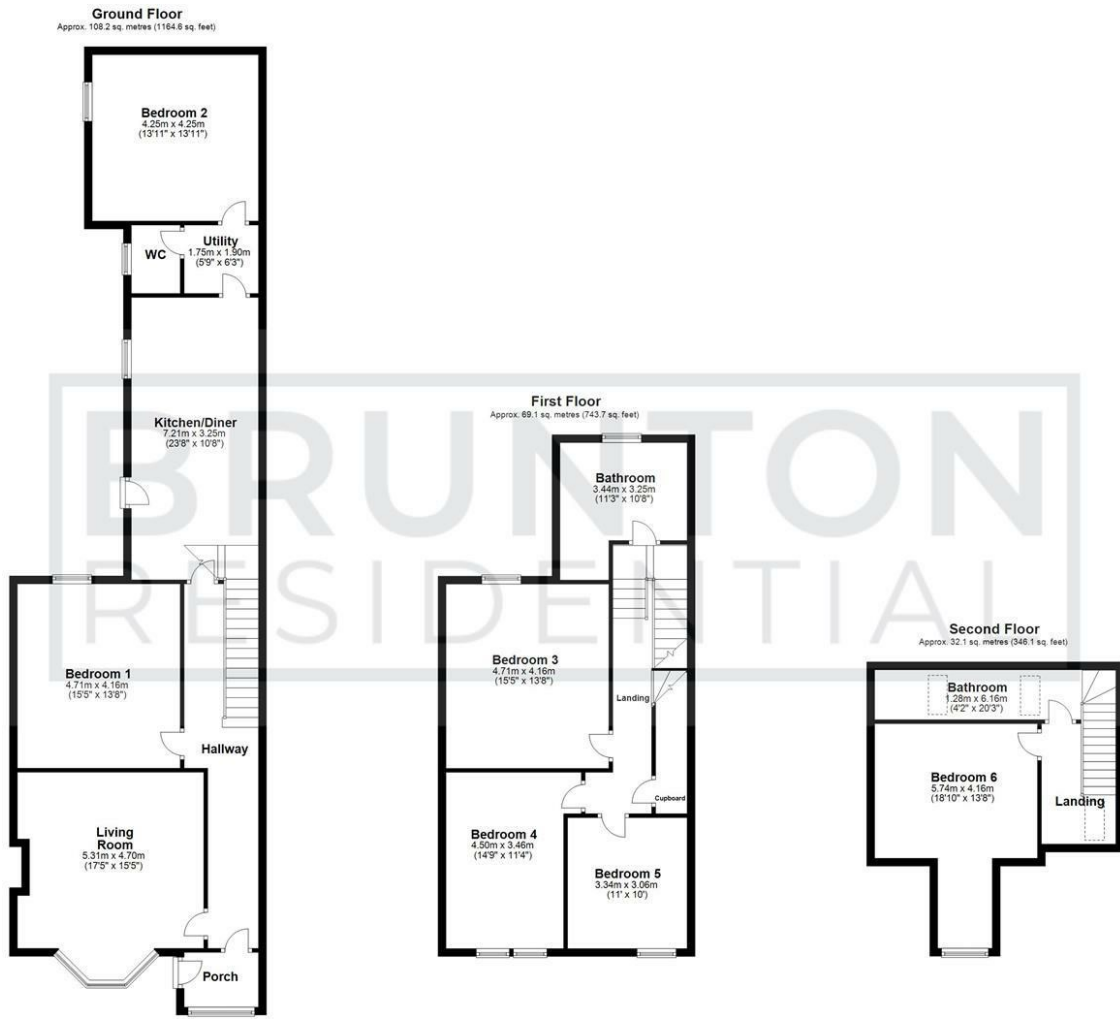
**\*\*360 Virtual Tour\*\*** Available 19th August 2024 - Rent £110pppw / £2,860pcm - Large House split over 3 floors - modernised throughout - Utility Room - High Spec Kitchen/Bathrooms - Private rear yard - On-street parking



**\*\*360 Virtual Tour\*\*** Available 19th August 2024 - Rent £110pppw / £2,860pcm - Large House split over 3 floors - modernised throughout - Utility Room - High Spec Kitchen/Bathrooms - Private rear yard - On-street parking - One of the best 6 beds in Heaton !!! Please use the virtual tour before booking a viewing.



## Floor Plan

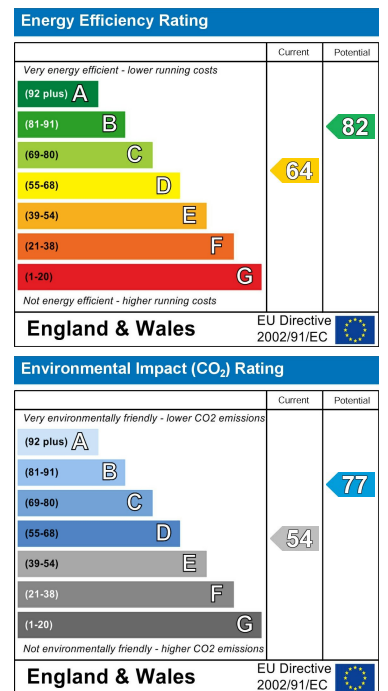


All measurements are approximate and are for illustration only.  
Plan produced using Planity.

## Area Map



## Energy Efficiency Graph



These particulars, whilst believed to be accurate are set out as a general outline only for guidance and do not constitute any part of an offer or contract. Intending purchasers should not rely on them as statements of representation of fact, but must satisfy themselves by inspection or otherwise as to their accuracy. No person in this firm's employment has the authority to make or give any representation or warranty in respect of the property.

125 St George's Terrace, Jesmond, Newcastle upon Tyne, Tyne & Wear, NE2 2DN