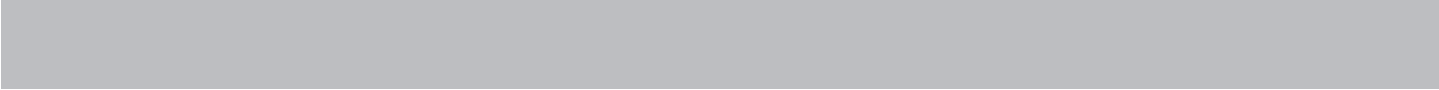




Cartington Terrace, Heaton, NE6 5QQ

£2,210 PCM


*** 360 VIRTUAL TOUR *** - Available 1st September 2024 - Rent £85pppw / £2,210pcm - 6 Double Bedrooms - Large Semi-Detached House - Two Bathrooms & Additional WC - Large Kitchen - Walking Distance To City Centre - Popular Heaton Location - Must Be Seen - Furnished



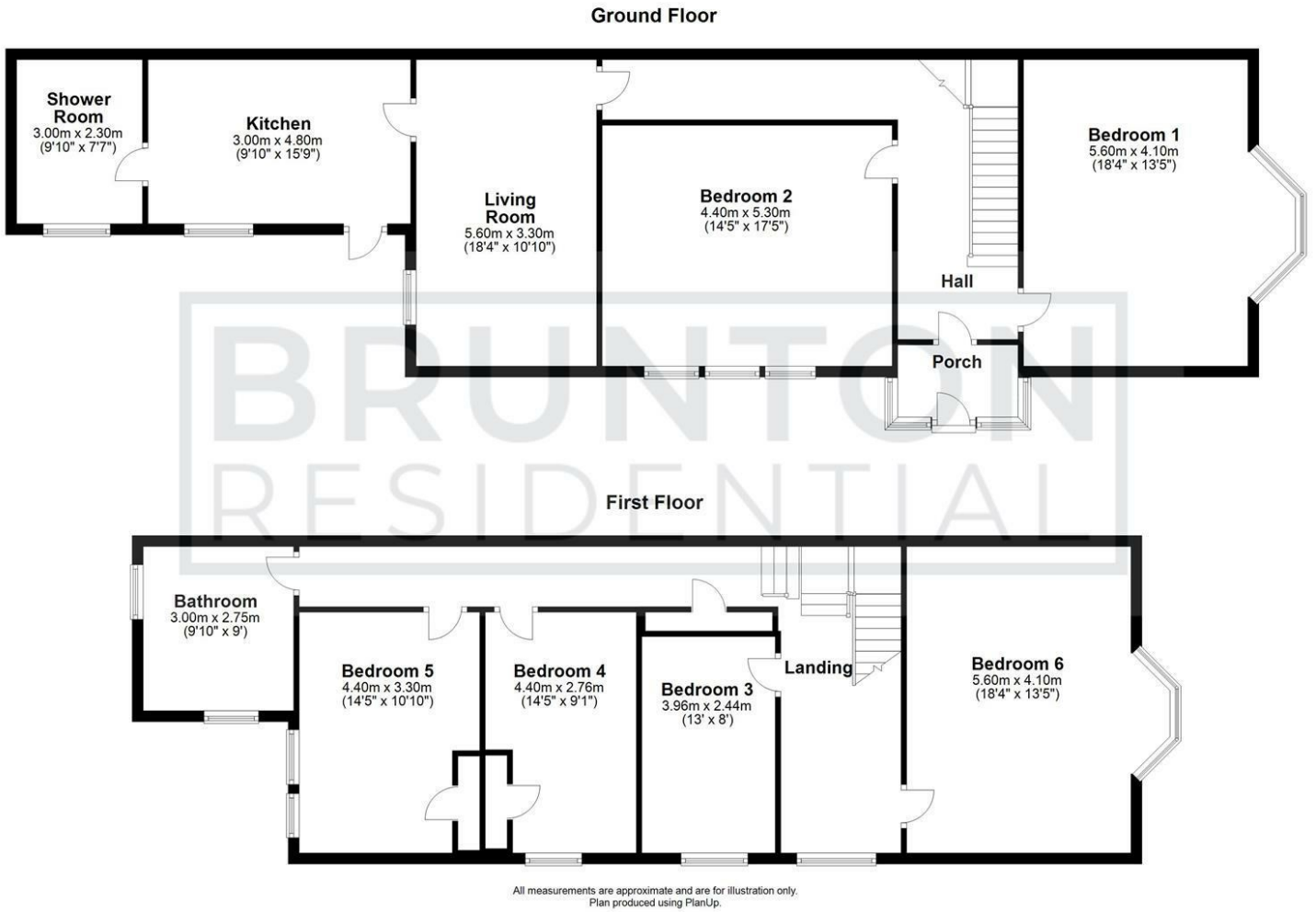
Brunton Residential – Fantastic 6 double bedroom student home available 1st September 2024, located on Cartington Terrace, Heaton, Walking distance to City Centre, Great popular student area.

- Available 1st September 2024
- £85pppw / £2,210pcm
- Extra £22pppw bills inclusive (gas, electricity, water, broadband, tv license)
- Large Semi-Detached house
- High standard
- 6 Double bedrooms
- 2 Bathrooms
- Large living room & kitchen
- One of the best student houses available
- Act fast – enquire now to arrange a viewing!

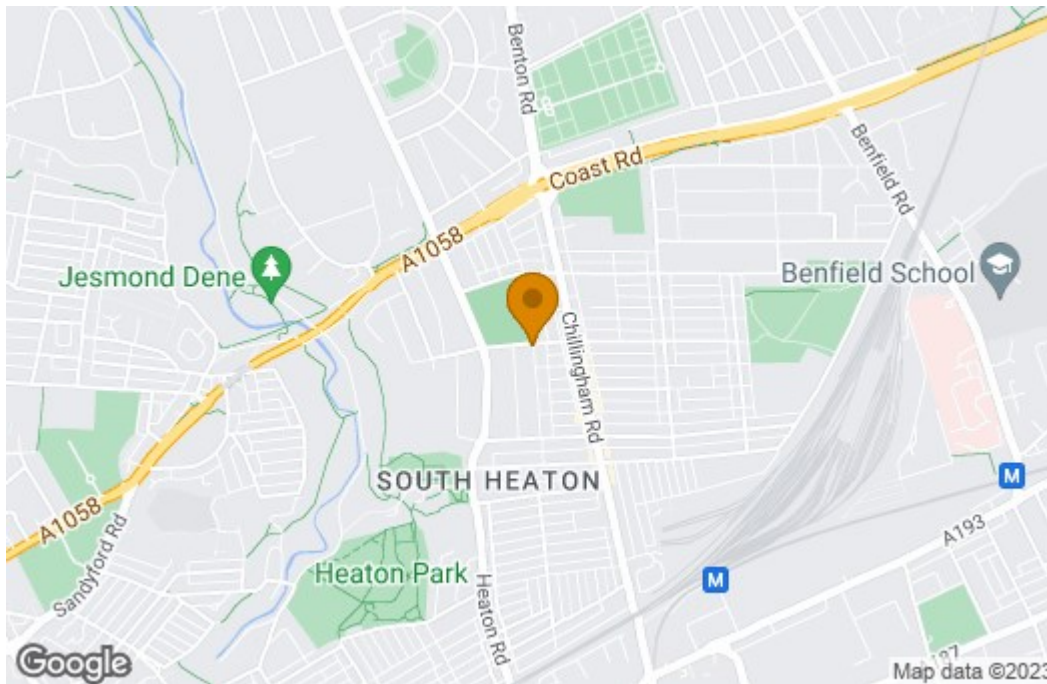
To view this property please either call us or send an enquiry and we'll arrange a time for you, once you decide to go ahead our online process is straight forward and easy to complete, for more details please ask or visit our website.



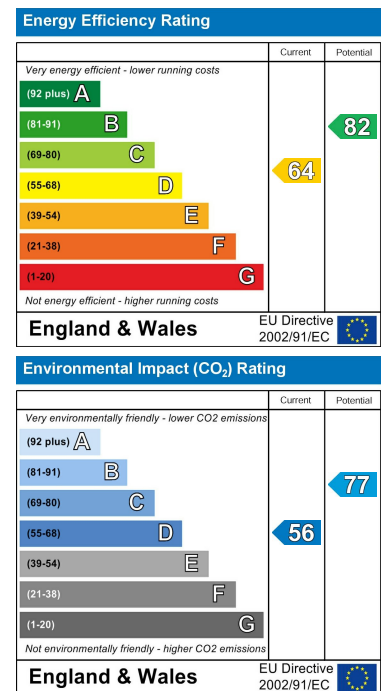
Floor Plan



Area Map



Energy Efficiency Graph



These particulars, whilst believed to be accurate are set out as a general outline only for guidance and do not constitute any part of an offer or contract. Intending purchasers should not rely on them as statements of representation of fact, but must satisfy themselves by inspection or otherwise as to their accuracy. No person in this firm's employment has the authority to make or give any representation or warranty in respect of the property.

125 St George's Terrace, Jesmond, Newcastle upon Tyne, Tyne & Wear, NE2 2DN