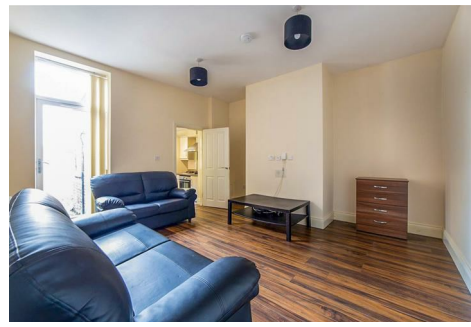


T. 0191 236 8347  
E. [info@bruntonresidential.com](mailto:info@bruntonresidential.com)  
A. 125 St George's Terrace, NE2  
W. 2DN  
[bruntonresidential.com](http://bruntonresidential.com)



## Addycombe Terrace, Heaton, NE6 5DQ

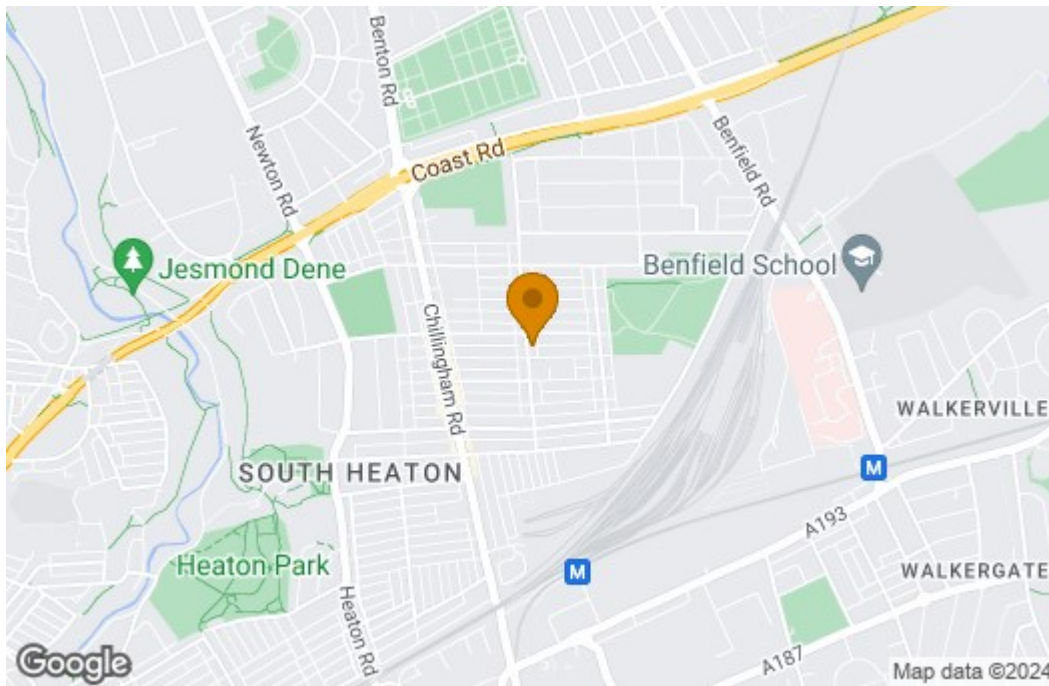
£1,050 PCM

\*\*\* 360 VIRTUAL TOUR \*\*\* - Available 8th August 2024 - Rent £1,050pcm - 2 Double Bedroom lower flat recently refurbished to a high standard. High spec bathroom and kitchen make this a very popular choice for professionals or responsible students. Located just off Chillingham Road the flat is a stones throw from the shops, bars, cafes and transport links Heaton has to offer. Act fast and call today to avoid disappointment!

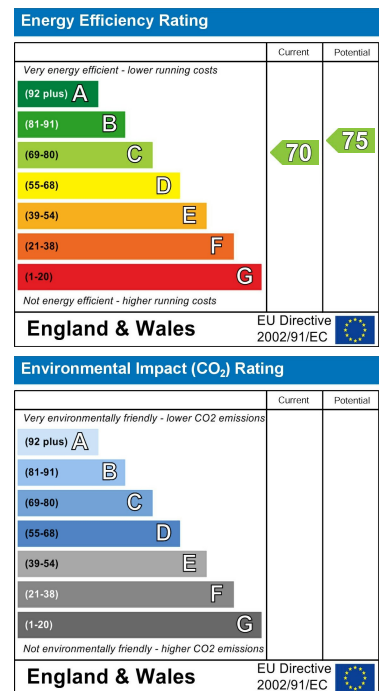


Floor Plan

Area Map



Energy Efficiency Graph



These particulars, whilst believed to be accurate are set out as a general outline only for guidance and do not constitute any part of an offer or contract. Intending purchasers should not rely on them as statements of representation of fact, but must satisfy themselves by inspection or otherwise as to their accuracy. No person in this firm's employment has the authority to make or give any representation or warranty in respect of the property.

125 St George's Terrace, Jesmond, Newcastle upon Tyne, Tyne & Wear, NE2 2DN