

T. 01912368347
E. info@bruntonresidential.com
A. Brunton Residential Middleton
W. South, Wagonway Drive, NE13
9RT



Willowbay Drive

Great Park, NE13 9EQ

EXCELLENT CONDITION - GREAT LOCATION - PERFECT STARTER HOME

Brunton Residential are delighted to offer for sale this three-bedroom townhouse located on Willowbay Drive in Great Park. This home is in an excellent condition throughout and would make a perfect home for first-time buyers.

Offers Over £195,000

119 Willowbay Drive

Great Park, NE13 9EQ



Accommodation briefly comprises of; entrance porch, lounge with window to front, breakfasting kitchen with window and French door access to rear gardens and an internal hallway with WC & staircase to first floor. The kitchen has a range of wall and floor units with coordinated work surfaces. The first floor consists of two bedrooms of equal size and one is currently being used as an additional reception room but both would fit a double bed with furniture while a family bathroom is in between. The top floor boasts a large master bedroom with ample storage. With this being an end of terrace, this home has a Dormer style window to the front, this allows more natural light and a better all round aesthetic to the top floor.

Externally there is a small lawned garden to the front with pathway access to the property. The rear garden is laid with artificial lawn with patio with fenced boundaries and gate access to designated parking space.

ON THE GROUND FLOOR

Lounge

15'0" x 12'0" (4.57m x 3.67m)

Kitchen

8'11" x 12'0" (2.72m x 3.67m)

WC

Bathroom

ON THE SECOND FLOOR

Bedroom

25'11" x 8'7" (7.90m x 2.61m)

Disclaimer

ON THE FIRST FLOOR

Bedroom

8'11" x 12'0" (2.72m x 3.67m)

Bedroom

8'8" x 12'0" (2.63m x 3.67m)



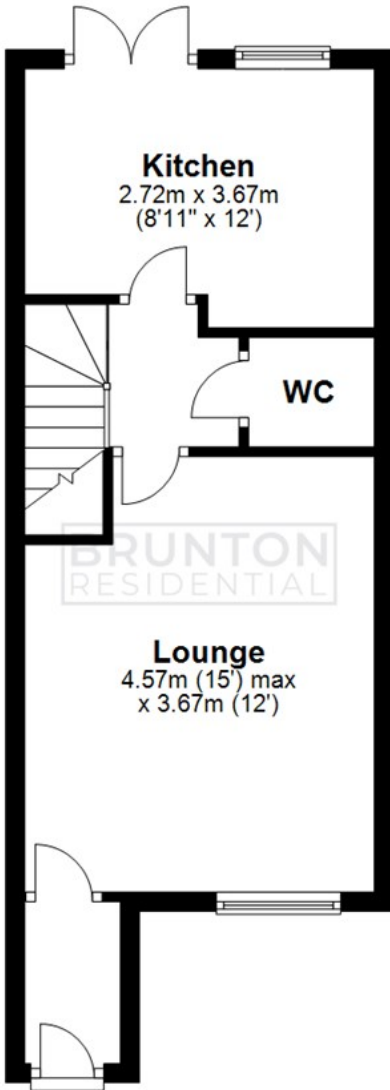
- EXCELLENT CONDITION
- OFF-STREET PARKING
- FREEHOLD
- THREE BEDROOM
- DESIRABLE LOCATION
- COUNCIL TAX BAND C
- TOWNHOUSE
- PERFECT STARTER HOME



Floor Plan

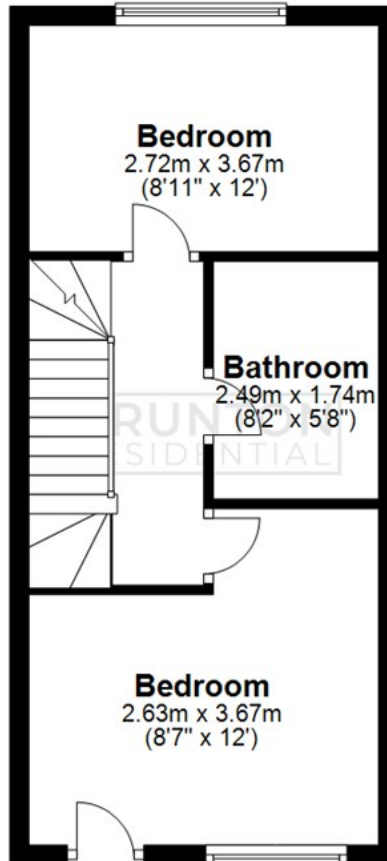
Ground Floor

Approx. 33.4 sq. metres (359.2 sq. feet)



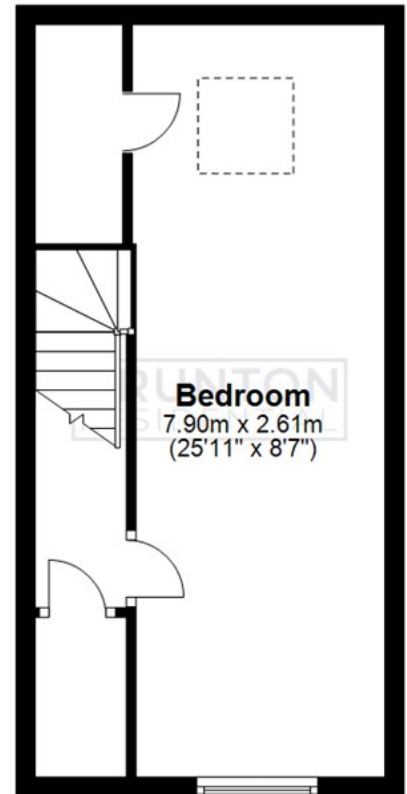
First Floor

Approx. 31.8 sq. metres (341.9 sq. feet)



Second Floor

Approx. 29.0 sq. metres (312.0 sq. feet)



All measurements are approximate and are for illustration only.
Plan produced using PlanUp.

These particulars, whilst believed to be accurate are set out as a general outline only for guidance and do not constitute any part of an offer or contract. Intending purchasers should not rely on them as statements of representation of fact, but must satisfy themselves by inspection or otherwise as to their accuracy. No person in this firm's employment has the authority to make or give any representation or warranty in respect of the property.

