

T. 01912368347
E. info@bruntonresidential.com
A. Brunton Residential Middleton
W. South, Wagonway Drive, NE13
9RT



Greville Gardens

Great Park, NE13 9DN

GREAT CONDITION - PERFECT STARTER HOME - SOUGHT AFTER LOCATION

Brunton Residential are delighted to offer for sale this three-bedroom townhouse located on Greville Gardens in Great Park. This home is in a sought after location, in fantastic condition throughout and would make a perfect home for first time buyers.

Offers Over £195,000

20 Greville Gardens

Great Park, NE13 9DN



Accommodation briefly comprises of; entrance porch, lounge with window to front, breakfasting kitchen with French door access to rear gardens and an internal hallway with WC & staircase to first floor. The kitchen has a range of wall and floor units with coordinated work surfaces and some fitted appliances. The first floor consists of two bedrooms of equal size, one of which with a Juliette balcony, both would fit a double bed with furniture while a family bathroom is in between. The top floor boasts a large master bedroom with ample storage. With this being an end of terrace, this home has a Dorma style window to the front, this allows more natural light and a better all round aesthetic to the top floor.

Externally, there are gardens to the rear and pathway access to the property and designated parking space to the front. The south-facing rear garden is a real suntrap and is made up of a combination of lawned, decked and patio areas with fenced boundaries.

ON THE GROUND FLOOR

Porch

Lounge

12'0" x 9'0" (3.65m x 2.75m)

Kitchen

10'1" x 12'0" (3.07m x 3.67m)

WC

Bedroom

8'8" x 12'0" (2.63m x 3.67m)

Bathroom

ON THE SECOND FLOOR

Bedroom

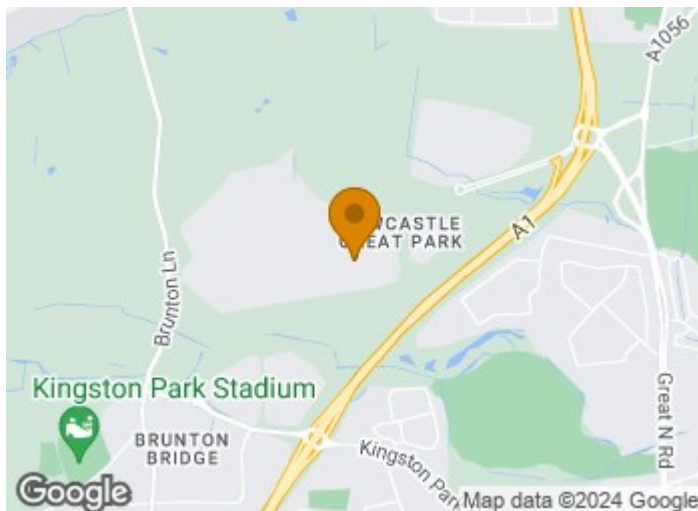
25'11" x 8'7" (7.90m x 2.61m)

Disclaimer

ON THE FIRST FLOOR

Bedroom

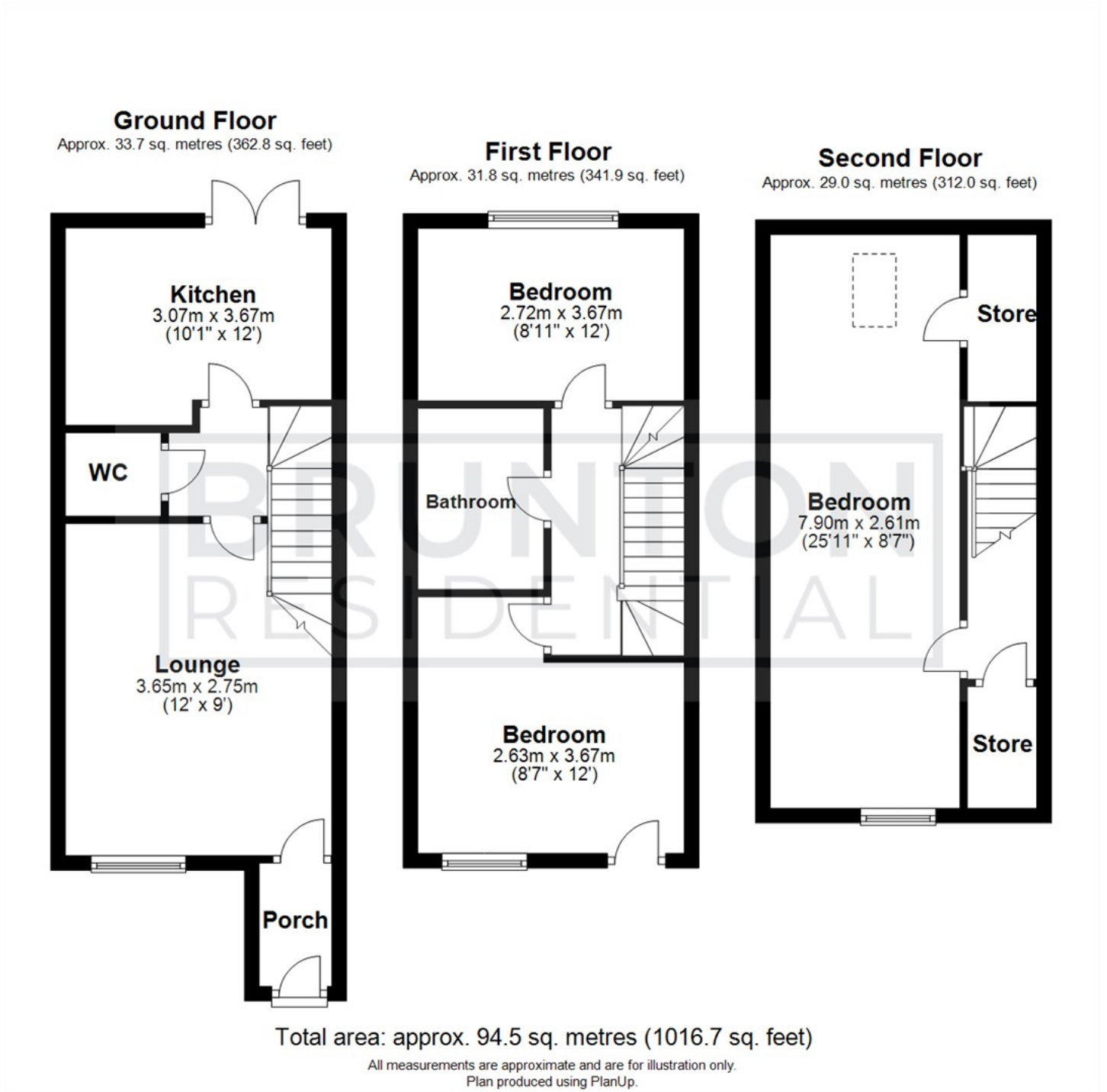
8'11" x 12'0" (2.72m x 3.67m)



- GREAT CONDITION
- TOWNHOUSE
- SOUTH FACING REAR GARDEN
- PERFECT FIRST TIME BUY
- END TERRACE
- OFF-STREET PARKING
- SOUGHT AFTER LOCATION
- THREE BEDROOMS



Floor Plan



These particulars, whilst believed to be accurate are set out as a general outline only for guidance and do not constitute any part of an offer or contract. Intending purchasers should not rely on them as statements of representation of fact, but must satisfy themselves by inspection or otherwise as to their accuracy. No person in this firm's employment has the authority to make or give any representation or warranty in respect of the property.

