

T. 01670 202008  
Emorpeth@bruntonresidential.co  
A. 28a Bridge Street , NE61 1NL  
W. bruntonresidential.com



## Kirkbride Place

Cramlington, NE23 2XQ

DETACHED HOME - EXTENDED - FANTASTIC CONDITION

Brunton Residential are delighted to offer for sale this detached home situated on substantial corner plot. This superb home, located on Kirkbride Place within Cramlington has a large driveway, substantial gardens and has been extended to the rear.

**£229,950**

# 7 Kirkbride Place

Cramlington, NE23 2XQ



Accommodation briefly comprises; entrance hallway with staircase to first floor, a lounge with windows to front along with doubles doors leading to a versatile room which could be used as a TV room, a formal dining room or a play room. The kitchen has been extended to the rear to offer another dining space. The kitchen offers a range of wall and floor units with coordinated work surfaces and fitted appliances, there is also a door to the integral garage. The first floor offers a master bedroom with fitted wardrobes, two further bedrooms and a recently fitted bathroom WC. Externally there is a large garden area to the rear, it is offered with a range of lawned and paved areas with fenced boundaries. The front of the property is mainly paved, offering substantial parking facilities This home is in an excellent condition throughout and represents fantastic value for money.

## ON THE GROUND FLOOR

Porch

Hallway

Dining Room

9'3" x 8'7" (2.81m x 2.61m)

Lounge

13'1" x 12'10" (4.00m x 3.91m)

Kitchen

9'3" x 10'3" (2.81m x 3.12m)

Family Room

15'5" x 8'11" (4.70m x 2.72m)

Garage

## ON THE FIRST FLOOR

Landing

Master Bedroom

13'7" x 9'11" (4.13m x 3.01m)

Bedroom

8'1" x 8'8" (2.47m x 2.63m)

Bedroom

8'10" x 12'10" (2.68m x 3.91m)

Bathroom

5'6" x 7'2" (1.67m x 2.18m)

[Disclaimer](#)



- DETACHED HOME
- EXTENDED TO REAR
- FANTASTIC CONDITION
- CORNER PLOT
- THREE BEDROOMS
- FRONT & REAR GARDENS

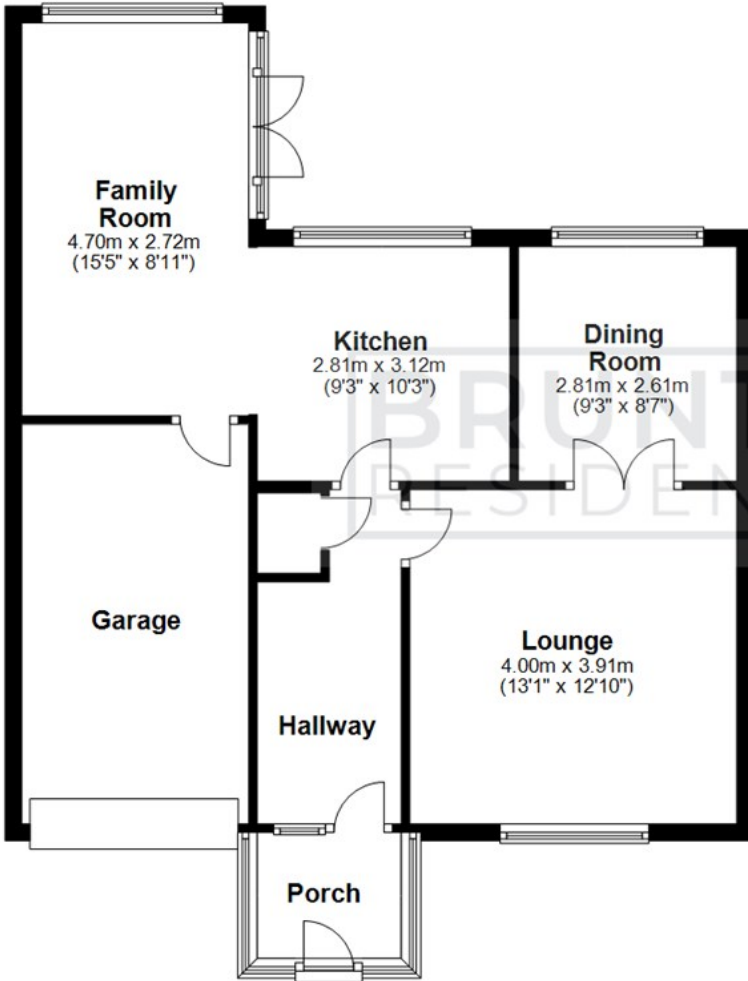




## Floor Plan

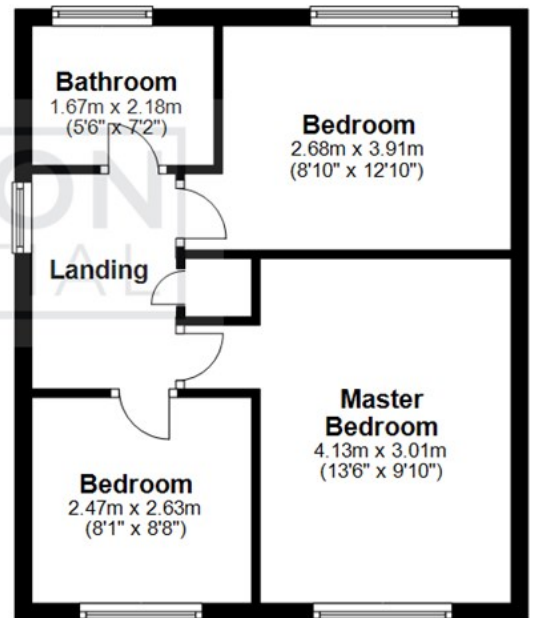
### Ground Floor

Approx. 69.4 sq. metres (747.0 sq. feet)



### First Floor

Approx. 39.6 sq. metres (426.5 sq. feet)



Total area: approx. 109.0 sq. metres (1173.5 sq. feet)

All measurements are approximate and are for illustration only.  
Plan produced using PlanUp.

These particulars, whilst believed to be accurate are set out as a general outline only for guidance and do not constitute any part of an offer or contract. Intending purchasers should not rely on them as statements of representation of fact, but must satisfy themselves by inspection or otherwise as to their accuracy. No person in this firm's employment has the authority to make or give any representation or warranty in respect of the property.

